



# ***RS Series User Guide***

---

**Revision 3.1**  
**January, 2014**

**Disclaimer:**

The specifications in this document are subject to change without notice.  
All trademarks mentioned in this document are the property of their respective owners,  
and are used herein for informational purposes only.

© 2013-2014 Quantum Scientific Imaging  
Phone 888-QSI-4CCD • [www.QSImaging.com](http://www.QSImaging.com)

# Table of Contents

<b>1. GETTING STARTED</b>		<b>Camera Selection</b>	<b>20</b>
<b>What's In the Box?</b>	<b>2</b>	<b>Status Indicators</b>	<b>21</b>
<b>Get to Know Your Camera</b>	<b>3</b>	<b>Imaging Options</b>	<b>22</b>
<b>Install Software and Drivers</b>	<b>4</b>	<b>Other Options</b>	<b>23</b>
<b>Confirm Installation and Camera Operation</b>	<b>4</b>	<b>Enable Pixel Masking</b>	<b>24</b>
<b>Launch MaxIm LE</b>	<b>4</b>	<b>Status and Notification</b>	<b>26</b>
<b>Connect the camera</b>	<b>5</b>	<b>Camera Status Indication</b>	<b>26</b>
<b>Take an image</b>	<b>7</b>	<b>Camera Error Indication</b>	<b>26</b>
<b>View the image</b>	<b>8</b>	<b>Audible Beeper</b>	<b>28</b>
		<b>Imaging Application Messages</b>	<b>28</b>
<b>2. CAMERA FEATURES AND OPERATION</b>		<b>3. CCD IMAGING OVERVIEW</b>	
<b>Camera Attachment Options</b>	<b>9</b>	<b>How CCDs work</b>	<b>29</b>
<b>Using SLR Lenses</b>	<b>10</b>	<b>Types of CCDs</b>	<b>29</b>
<b>Attach the camera to your telescope</b>	<b>10</b>	<b>Full-Frame CCDs</b>	<b>29</b>
<b>Electrical Connections</b>	<b>11</b>	<b>Interline Transfer CCDs</b>	<b>30</b>
<b>DC Power Connector</b>	<b>11</b>	<b>Anti-Blooming CCDs</b>	<b>30</b>
<b>USB Connector</b>	<b>12</b>	<b>Microlenses</b>	<b>31</b>
<b>Guider Control Port</b>	<b>13</b>	<b>Single-shot color CCDs</b>	<b>31</b>
<b>Cooling the Camera</b>	<b>14</b>	<b>Signal versus noise</b>	<b>32</b>
<b>Standard Air Cooling</b>	<b>14</b>	<b>Reducing noise in CCD images</b>	<b>33</b>
<b>Liquid-Assisted Cooling</b>	<b>14</b>	<b>Dark Frames</b>	<b>33</b>
<b>How Much Cooling Is Enough</b>	<b>15</b>	<b>Flat Fields</b>	<b>35</b>
<b>Controlling the Cooler</b>	<b>16</b>	<b>Bias Frames</b>	<b>37</b>
<b>Internal Color Filter Wheel</b>	<b>18</b>	<b>Stacking Images</b>	<b>38</b>
<b>Advanced Setup Options</b>	<b>19</b>	<b>Color images</b>	<b>39</b>

---

#### **4 . T A K I N G   I M A G E S**

<b>Launch MaxIm LE</b>	<b>40</b>
<b>Camera Control Window</b>	<b>41</b>
<b>Cool the CCD</b>	<b>43</b>
<b>Focusing with MaxIm LE</b>	<b>44</b>
<b>Take a single image</b>	<b>45</b>
<b>View the image in MaxIm LE</b>	<b>46</b>
<b>Take a series of images</b>	<b>46</b>
<b>Image Calibration</b>	<b>48</b>
<b>Dark Frames</b>	<b>49</b>
<b>Bias Frames</b>	<b>49</b>
<b>Flat Fields</b>	<b>49</b>
<b>Flat Darks</b>	<b>50</b>
<b>Manual Image Calibration</b>	<b>50</b>
<b>Subtract Dark Frames</b>	<b>50</b>
<b>Scale by Flat Fields</b>	<b>52</b>
<b>Automatic Calibration in MaxIm LE</b>	<b>53</b>
<b>Calibrate Images in MaxIm LE</b>	<b>57</b>
<b>Combine Frames in MaxIm LE</b>	<b>58</b>
<b>Binning</b>	<b>61</b>
<b>Using the internal Color Filter Wheel</b>	<b>64</b>
<b>Shutting down your camera</b>	<b>65</b>
<b>Controlling with other software</b>	<b>65</b>

#### **5 . E L E C T O N I C   S I G N A L S**

<b>Triggering an Exposure or Electronic Signal</b>	<b>66</b>
<b>Autoguider support in MaxIm LE</b>	<b>66</b>
<b>Using an AutoGuider</b>	<b>Error! Bookmark not defined.</b>
<b>Using a QSI Camera as an AutoGuider</b>	<b>70</b>

#### **6 . A C C E S S O R I E S**

<b>T-mount adapter</b>	<b>72</b>
<b>2" nosepiece</b>	<b>72</b>
<b>1 1/4" nosepiece</b>	<b>72</b>
<b>C-mount adapter</b>	<b>72</b>
<b>SLR lens adapter</b>	<b>72</b>
<b>Liquid heat exchanger</b>	<b>73</b>
<b>Recirculating pump</b>	<b>73</b>
<b>Color filter wheel</b>	<b>73</b>

#### **7 . C A R E   &   M A I N T E N A N C E**

<b>Cleaning the exterior</b>	<b>74</b>
<b>Installing or removing color filters</b>	<b>74</b>
<b>Installing or removing 31mm color filters</b>	<b>75</b>
<b>Installing the 8-position CFW</b>	<b>75</b>
<b>Cleaning the color filters</b>	<b>76</b>
<b>Cleaning the CCD cover glass</b>	<b>77</b>
<b>Updating the Firmware</b>	<b>77</b>
<b>Recharging the desiccant</b>	<b>79</b>
<b>Technical support</b>	<b>80</b>

#### **7 . A P P E N D I C E S**

<b>Appendix A – 500 Series Specifications</b>	<b>81</b>
<b>Appendix B – Warranty</b>	<b>87</b>
<b>Appendix C - Notices</b>	<b>89</b>

---

## Getting Started

*Thank you for your purchase of a QSI Camera.*

The QSI RS Series family of cooled CCD scientific cameras is designed to produce images with wide dynamic range, excellent linearity and low noise. Your QSI camera will provide years of service if properly treated and maintained. To get the most from your camera, we recommend that you read this User Guide thoroughly and follow the included precautions.

If you're in a hurry to try out your new camera and are familiar with the general operation of CCD cameras, this "Getting Started" section provides the basic information you will need to setup your camera and take your first image. Please refer to the full User Guide and the online help provided with MaxIm LE for complete instructions.



**The QSI RS Series Camera Family Showing Different Body Configurations**

## What's In the Box?

Your QSI RS Series camera was shipped in a water-tight Pelican case with custom-cut foam to provide the ultimate in protection. Please take a few minutes to examine your camera to make sure that it has arrived in good condition, and that the case contains the items listed below. Note that additional items purchased at the time of order may be included as well.

- **Camera body**
- **Mounting Adapter** Standard T-Mount, or optional mounting adapter
- **Body cap** Matching body cap for Mounting Adapter
- **AC Power Adapter** Universal AC power supply (100-240VAC, 50-60Hz) with detachable, region-specific AC power cord
- **USB Cable** 3m USB 2.0 cable
- **Control Cable** 3m. control cable with modular connectors on each end
- **Tools** Tool kit for camera maintenance
- **Documentation envelope containing the following:**
  - Quick Start Guide
  - CD-ROM containing the Installation program, MaxIm LE, the USB and camera drivers, and the Installation Guide and this User Guide in PDF format.
  - (Optional) A document with the license information for any licensed software, such as MaxIm LE.



**Open Pelican case showing QSI camera and standard accessories**

## Get to Know Your Camera

*Take a few minutes to familiarize yourself with the external connections and features of your camera.*



The image above shows the major external features of a typical QSI RS Series camera with a 5-position internal color filter wheel. The depth of the Camera Cover on your camera may differ depending on the internal options installed. 8-position CFW models have a larger front cover.

## Install Software and Drivers

The USB drivers and associated software included on the installation CD-ROM must be installed before connecting your QSI camera to your computer.

**Note: Do not connect your camera to your computer until instructed to do so during the camera installation process.**

Refer to the QSI RS Series Camera Installation Guide for complete software and hardware installation instructions.

## Confirm Installation and Camera Operation

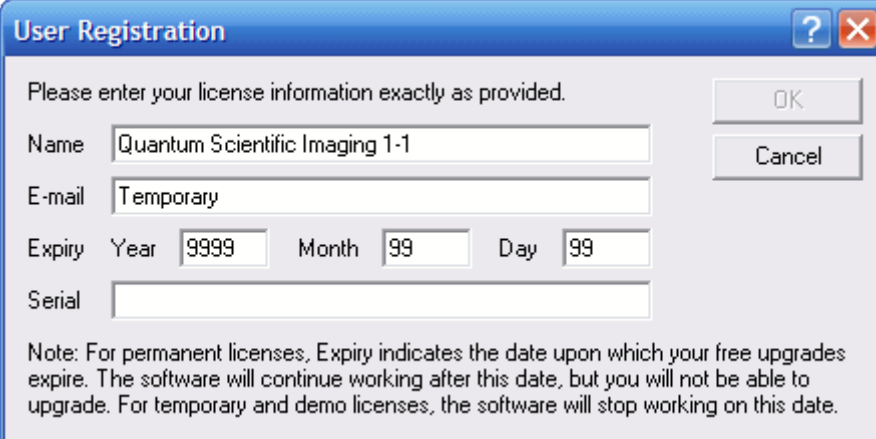
After the successful installation of the camera and the associated software is complete, you can quickly test your camera with any supported application. Leave the camera USB cable and power supply connected, and follow the steps below.

### Launch MaxIm LE (if purchased with your camera)

After installing the camera drivers and MaxIm LE from the Installation CD-ROM, launch MaxIm LE by double-clicking the MaxIm LE icon on your desktop or by selecting "Programs > MaxIm LE > MaxIm LE" from the Windows Start menu.

The first time you run MaxIm LE you will be asked to enter your temporary User Registration information. Enter the Name, Email, Expiry dates and Serial number information exactly as printed on the MaxIm LE License Information sheet included in the documentation envelope with your camera.

**Caution:** Do not enter your real name and email address. Enter the information exactly as printed on the included MaxIm LE License Information sheet.



The image shows a 'User Registration' dialog box with a blue title bar and standard Windows window controls. The text inside says 'Please enter your license information exactly as provided.' There are input fields for 'Name' (containing 'Quantum Scientific Imaging 1-1'), 'E-mail' (containing 'Temporary'), 'Expiry' (with sub-fields for Year '9999', Month '99', and Day '99'), and 'Serial' (empty). 'OK' and 'Cancel' buttons are on the right. A note at the bottom explains the expiry date for permanent, temporary, and demo licenses.

User Registration

Please enter your license information exactly as provided.

Name: Quantum Scientific Imaging 1-1

E-mail: Temporary

Expiry: Year 9999 Month 99 Day 99

Serial:

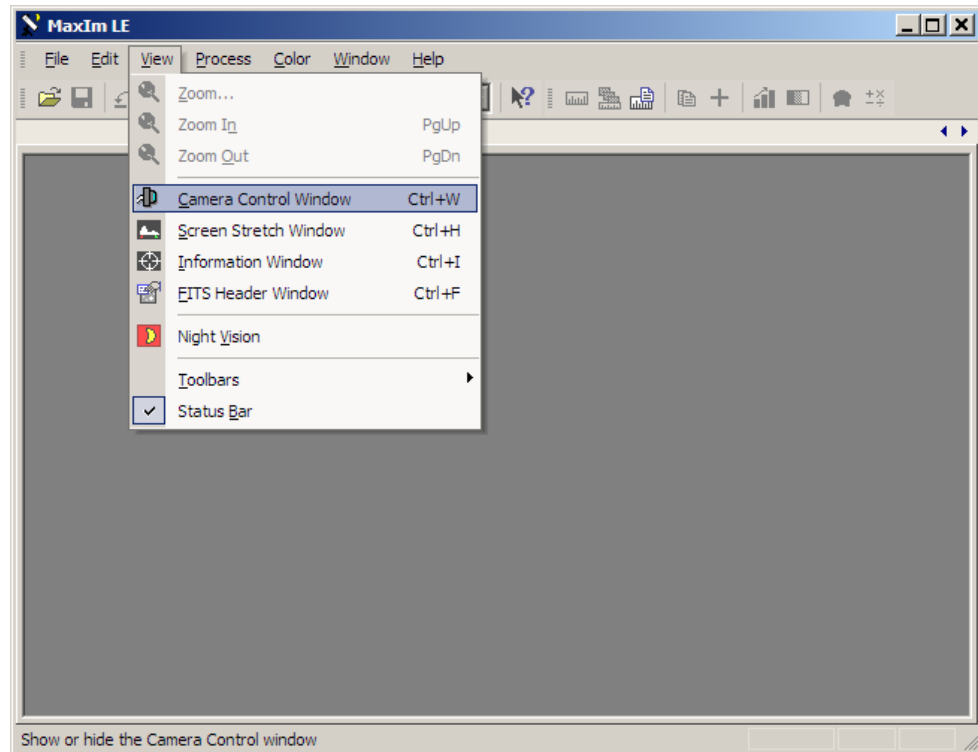
OK Cancel

Note: For permanent licenses, Expiry indicates the date upon which your free upgrades expire. The software will continue working after this date, but you will not be able to upgrade. For temporary and demo licenses, the software will stop working on this date.

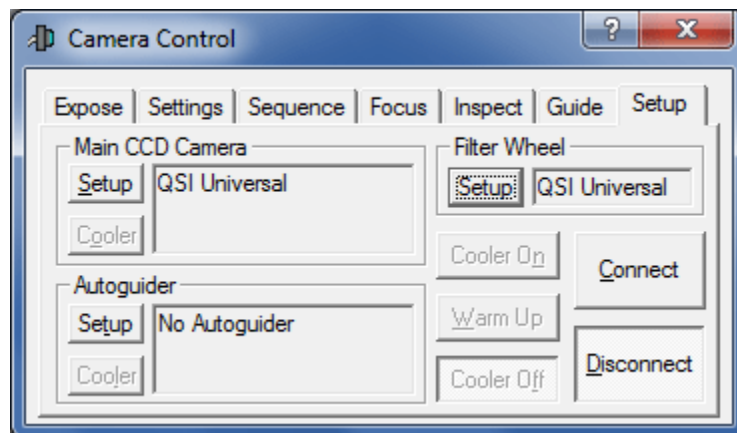
This license will work for 30 days from the time it is installed. **You must register directly with Diffraction Limited to receive your permanent license.** Select [Register Online](#) from the [Help](#) Menu in MaxIm LE and follow the directions to receive your permanent license.

## Connect the camera

Select "Camera Control Window" from the View menu to open the Camera Control Window.



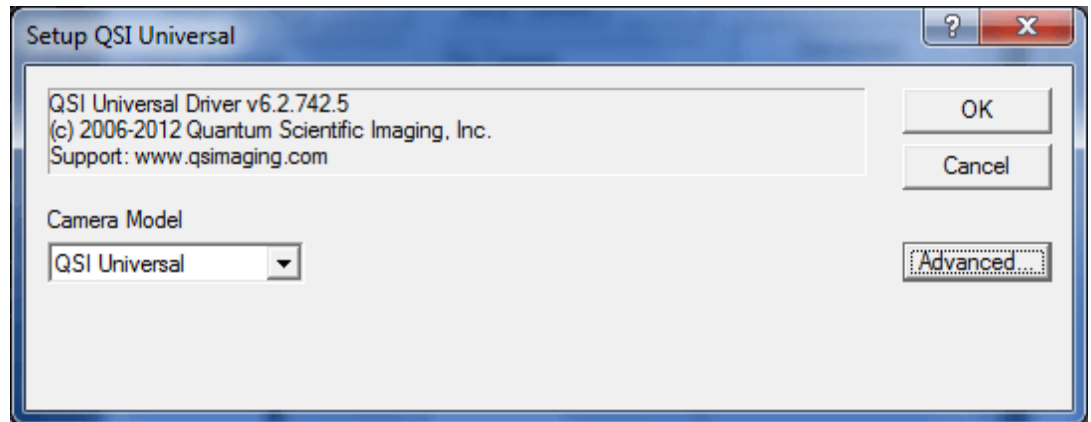
MaxIm will open the Camera Control window and display the Setup tab. After MaxIm is installed it must be told which camera to use.



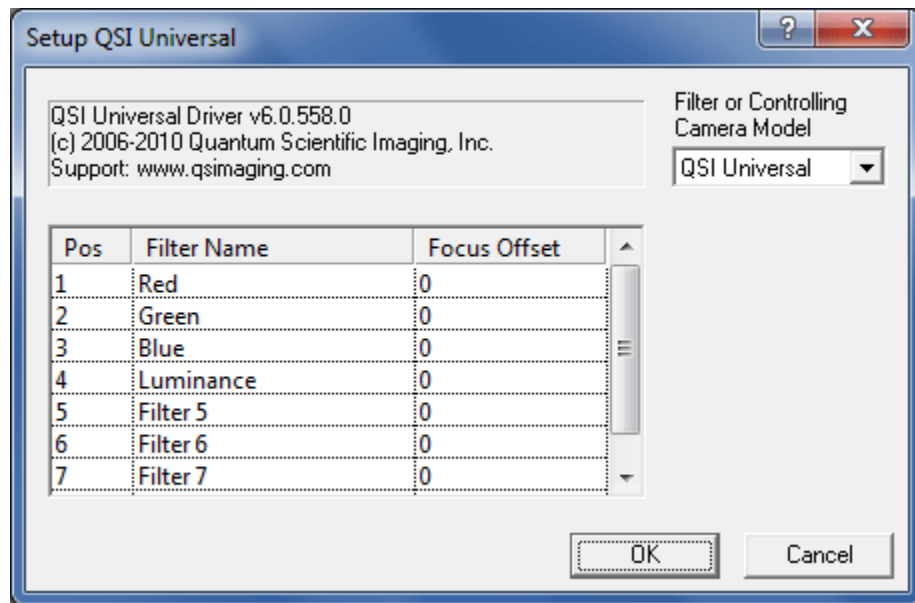
Click the "Setup" button in the upper left corner under Main CCD Camera.



Select “QSI Universal” from the Camera Model list box. Click OK.



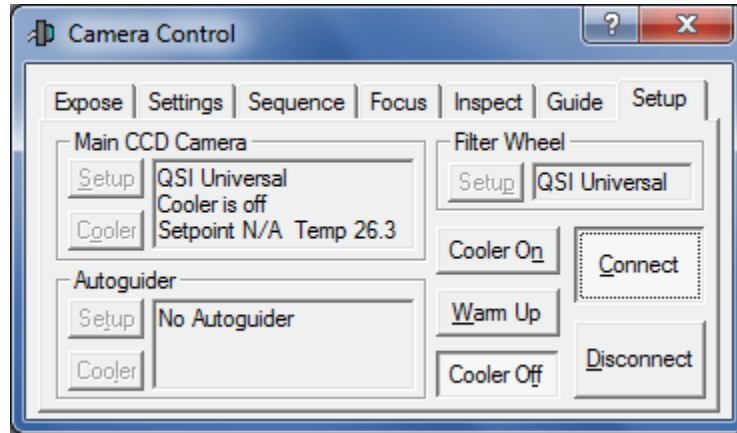
That will take you back to the Camera Control Window. If you have a QSI camera with an internal color filter wheel you'll also need to tell MaxIm about that by clicking “Setup” under “Filter Wheel” toward the upper right of the Setup tab.



Select “QSI Universal” as the filter wheel model. Click OK.

**Note:** The filter wheel must be setup separately from the camera even on RS Series WS model cameras where the filter wheel is integral to the camera.

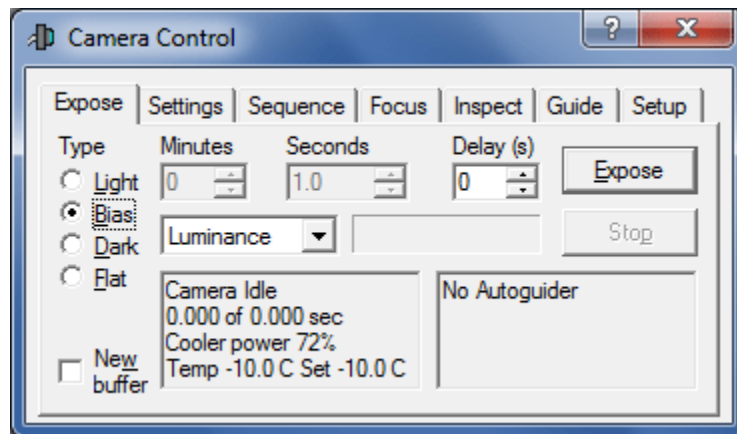
Click the “Connect” button to establish communication between MaxIm and your QSI camera. If MaxIm fails to connect to the camera, double-check that power is supplied to the camera and that the USB cable is securely connected. Once MaxIm connects to the camera the Camera Control window will look like this:



**Note:** This example assumes the camera does not have a color filter wheel. If you setup a filter wheel, “QSI Universal” will be displayed under Filter Wheel in the dialog above.

### Take an image

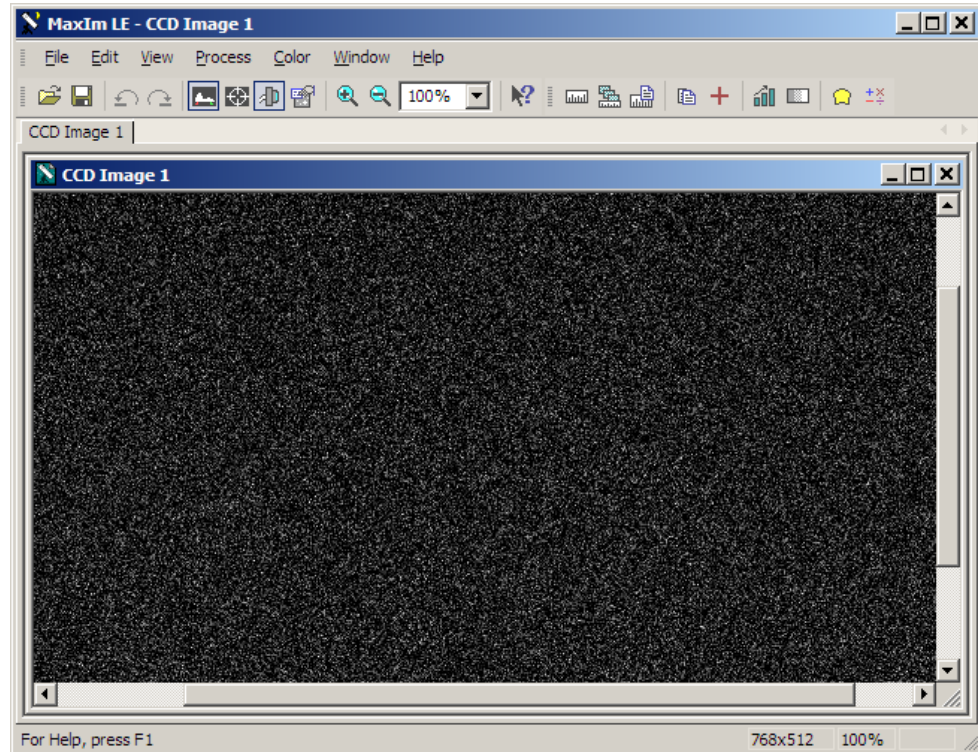
Click the “Expose” tab along the top of the Camera Control window.



There are several fields and buttons in this window. On the left is a series of radio buttons to select the type of frame to expose. The options are Light, Bias, Dark and Flat. Click the button next to “Bias” to select a bias frame. A bias frame is an exposure with the shutter closed of essentially zero exposure time. The Minutes and Seconds will be grayed indicating that the exposure time can’t be modified for a bias frame. Make sure the Delay is set to “0”. Click “Expose” to take one bias frame.

### View the image

MaxIm will instruct the camera to acquire a bias frame and then automatically download and display the resulting image. Your screen should look something like this.



Your display may vary somewhat from the screen shot above and the image displayed may be larger or smaller than that shown depending on your camera model. While a room temperature Bias image isn't very exciting, this does provide confirmation that your software and camera are installed and working properly.

Congratulations, you have just connected your new QSI RS Series camera and acquired your first image. If you're familiar with MaxIm LE, or are using some other camera control software, you are now ready to begin taking additional images.

For all users, but especially if you're new to CCD imaging with MaxIm LE, we suggest you read the entire QSI RS Series Camera User Guide to familiarize yourself with all of the features and capabilities of your new QSI camera.

## Camera Features and Operation

### Camera Attachment Options



The camera can be attached to your telescope or other optics in a variety of ways. The image above shows the industry standard T-Adapter with an attached 2" nosepiece. An optional 1.25" nosepiece is also available. The T-Adapter is compatible with a wide variety of standard accessories.

An optional C-Adapter adapter is also available. The C-Adapter replaces the T-Adapter and is compatible with many standard lenses, lens mounting accessories and other equipment such as microscopes.

**Note:** The T-Adapter has industry standard 42mm diameter x 0.75mm pitch threads. The C-Adapter has industry standard 1" x 32TPI threads. Always make certain that any device you attempt to thread into either adapter has proper matching threads. Some optical components have threads that look like they might work, but have slightly different dimensions. **Never force-thread anything into the adapters.**

## Using SLR Lenses

QSI offers SLR lens adapters for attaching Nikon F-mount or Canon EOS lenses to your QSI camera. See Section 6 in this Guide for a list of available adapters and compatibility requirements. **Note:** Custom mounting adapters can be employed to satisfy many unique or non-standard mounting requirements. Contact QSI for the dimensions and requirements for custom mounting adapters.

## Attach the camera to your optics

The picture below shows a QSI 500 Series camera with 2" nosepiece being fitted to the 2" focusing tube of a refracting telescope. Always use the largest nosepiece or adapter that your optics will allow to minimize any vignetting of your image.



With the correct diameter nosepiece firmly screwed in to the front of the camera, carefully guide the nosepiece into the eyepiece adapter on your telescope. Tighten any retaining screw or screws to ensure the camera is stable and will not slip or move when the orientation of the telescope changes.

## Electrical Connections

The image at the left is a close-up of the bottom of the camera body. All electrical connections to the camera are made through the three connectors located on this connector panel. The panel is recessed into the camera body to protect the connectors when no cables are attached.



### DC Power Connector

The camera is ordinarily powered by the included AC power adapter which plugs into the middle connector on the bottom of the camera. The AC power adapter accepts any input voltage from 90v to 240v and 50-60 Hz. It is supplied with a region-specific AC power cord.

Shortly after power is applied to the camera, the Camera Status Indicator on the back of the camera will start glowing yellow indicating that the camera is starting up. The camera will make a small “chirp” sound and then a few seconds later will make a “chirp chirp” sound indicating that the camera successfully completed its initialization steps. The Camera Status Indicator will begin flashing green if the camera is not connected via the USB cable. The Camera Status Indicator will glow solid green once the camera is connected to the computer via the USB cable. See the **Status and Notification** discussion later in this Section for additional detail.

**Note:** Power-up initialization can take up to 6 seconds. It is not possible to connect to the camera from the imaging application \ during this time. Any attempt to do so will cause an error message to be displayed by your imaging application.

**Note:** The camera is designed to operate on stable, regulated 12V DC power and consumes less than 2 amps at full power. DC power input above or below 12V will decrease the maximum cooling capability of the camera by increasing power dissipation or lowering cooling efficiency. If the input voltage is below 11V or above 14V the camera will report an error until the voltage is returned to the specified range. See **Status and Notification** below.

**Caution:** Applying an input voltage over 16V or under 10V may permanently damage the camera and will void the camera warranty.

**Note:** The camera power connector uses a standard 2.1mm coaxial DC power connector with center positive. Inside diameter 2.1mm, outside diameter 5.5mm, length 10mm.

**Caution:** Because of the wide range of potential power sources (especially with field operations that can also employ batteries, generators, DC inverters, etc.) there is the real possibility of damaging your camera and other electrical equipment by creating unexpected ground loops and different ground reference potentials between your equipment.

It is highly recommended that the included AC adapter be used to power the camera at all times. If a power source other than the included AC adapter is used, it is your responsibility to insure that it is suitable. Avoid sharing the camera DC power source with other devices that can produce excessive noise (old technology dew heaters, etc.) and possible ground loops that could interfere with the reliable operation, or even damage your imaging equipment.

If you choose to use a power source other than the included AC adapter and are uncertain about meeting these requirements, please contact QSI for assistance.

## USB Connector

The camera's USB interface is compatible with USB 2.0 and 1.1. The included USB 2.0 cable plugs into the USB port on the camera connector panel. The other side connects to any standard USB port on your computer. All camera control commands and resulting images are passed over the USB cable.

**Note:** *Do not connect your camera to your computer unless you have successfully installed the camera software and drivers.*

After the camera power-up initialization is complete, and the camera's USB cable is connected to your computer, the computer will make a Plug-N-Play sound indicating that a device was connected to the computer. This means that your camera is ready and is listening for commands to be sent over the USB connection.

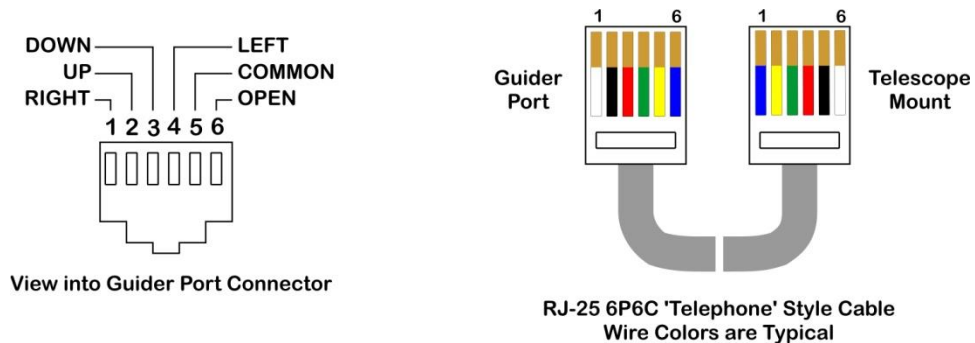
**Note:** QSI RS Series cameras do not draw power from the USB bus. Powered hubs are not necessary for operation.

### Guider/Control Port

All QSI RS Series cameras have a Guider/Control Port that can be used in conjunction with MaxIm LE (or other CCD imaging software) to 'guide' your telescope mount for long-duration astro-imaging. Ordinarily, the Port is only operational if the camera is being used as the 'Guider' camera, or if you're using the QSI camera as your main imaging camera and have configured MaxIm to send guider correction signals through the "Main Relays". See MaxIm online help for details.

The Guider Port employs an RJ-25, 6-conductor modular connector. The interface scheme is compatible with most modern telescope mounts. Typically, a 6P6C (6 position, 6 conductor) *telephone-style* cable is required for connecting the camera to the mount's guider input. This type of cable is commonly available at retailers such as Radio Shack. A 10 ft. version of this cable is supplied with RS Series cameras.

The image below summarizes how the Guider Port and compatible cable are wired:



**Note:** The Guider Port outputs employ optically isolated solid-state switches that mimic the traditional behavior of older technology mechanical relays. The optical isolation prevents potentially interfering or damaging ground loops between the camera and mount.

This newer approach is compatible with most modern telescope mounts (Meade, Losmandy, Astro-Physics, Software Bisque, etc.) that employ logic inputs pulled to VCC with a suitable load resistor.

Adapter cables are available from third parties to connect to other guider port configurations, such as the Mini-DIN connector on Takahashi mounts.

**Caution:** Do not apply more than 50v or 50ma to the guider port pins. The 'Common' input must be at ground, or zero volt potential relative to the control inputs of your mount. Contact QSI if you are uncertain about your mount's electrical characteristics.



## Cooling the Camera

Cooling the CCD is essential for successful long exposure imaging. Cooling the sensor dramatically reduces the dark current and resulting thermal noise in an image and makes long exposures practical. See the discussion in the 'CCD Imaging Overview' Section on dark current and noise.

QSI RS Series cameras use a very efficient thermo-electric cooler (TEC) which relies on the 'Peltier Effect' to cool the CCD. When power is applied to a TEC, one side of the device gets cold and other side gets hot, essentially pumping heat from the cold side to the hot side. All QSI RS Series cameras employ a two-stage TEC to increase the differential cooling effect.

The more power applied to the TEC, the greater the differential cooling and the colder the CCD can get. The heat pumped from the CCD, as well as the power dissipated by the TEC, creates a significant amount of excess heat that must be removed from the camera. QSI RS Series cameras employ two different methods for removing this heat.

### Standard Air Cooling

The back of a QSI RS Series camera acts as a large heatsink with cooling fins machined directly into the body. Two automatically controlled cooling fans force air through these fins. The movement of air through the cooling fins greatly increases the amount of heat removed from the camera.

Keep in mind that the lowest temperature that the CCD can be cooled is limited by the ambient air temperature and the speed of the cooling fans. Achieving very low temperatures is easy when imaging outdoors during cooler weather. If it is particularly cold you may not even need to turn the fans on. If the weather is warm and humid you may not be able to cool the CCD to the desired temperature. See the specifications for your camera to determine the maximum cooling differential you can expect under typical conditions.

### Liquid-Assisted Cooling

Forced air cooling is usually all that is needed to reach desired levels of cooling. However, in warm weather, indoors, or other particularly demanding situations, additional cooling can be achieved with the optional Liquid Heat Exchanger, or LHX. The LHX utilizes recirculating water for more efficient removal of heat from the camera. All things being equal, the LHX can provide an additional 7°C to 10°C of CCD cooling. It attaches to the rear of the camera body as illustrated in the image to the right. The LHX includes a thin thermal pad. Place the thermal pad between the LHX and the camera body. Hold the LHX and pad in place with the provided screws.

Water flows through the two hoses, colored blue in this picture. Self-sealing quick-disconnect couplings are used to attach the hoses to the LHX so that the hoses can be removed easily without leakage of the recirculating water.



There are numerous ways of supplying recirculating water for the camera. One of the simpler and more common methods for astro-photography is to place a small submersible pump into a 5 gallon plastic pail full of cool water. The temperature of this amount of water will rise by only a few degrees after a full night of imaging. For additional details on the Liquid Heat Exchanger, see the **Accessories** section below.

**Note:** The Fans can usually be turned off when using the LHX. In fact, the fans may actually decrease the cooling ability if the air is warmer than the liquid.

**Caution:** It is generally advised that only water be used in the LHX. Coolants such as ethylene glycol and some solvents may damage the seals and gaskets.

Additional cooling tips can be found in the QSI Knowledge base on the QSI web site:

[http://store.qsimaging.com/kb\\_results.asp?ID=6](http://store.qsimaging.com/kb_results.asp?ID=6)

### How Much Cooling Is Enough

Good results can be obtained with the CCD cooled to  $-10^{\circ}\text{C}$  when taking modest length exposures. This is easy to achieve with forced air cooling on a QSI 500 Series camera when the ambient air is at  $25^{\circ}\text{C}$  ( $77^{\circ}\text{F}$ ) or lower. For most CCDs used in QSI RS Series cameras, dark current is reduced by half for every  $\approx 6^{\circ}\text{C}$  drop in the temperature of the CCD. Cooling from  $26^{\circ}\text{C}$  to  $-10^{\circ}\text{C}$  results in a 64-fold decrease in CCD dark current. For more demanding imaging and longer exposures, lower temperatures are desirable. Cooling the CCD another  $12^{\circ}\text{C}$  to  $-22^{\circ}\text{C}$  lowers the dark current further to just 0.4% of the dark current at  $26^{\circ}\text{C}$ . Cooling below  $-30^{\circ}\text{C}$  results in a diminishing improvement as the noise from the dark current is outweighed by the intrinsic read noise of the CCD itself. The camera will actively prevent the CCD from being cooled below  $-40^{\circ}\text{C}$ .

Fahrenheit	-40F	-20F	0F	20F	32F	40F	60F	80F
Celsius	-40C	-29C	-18C	-7C	0C	4C	16C	27C

**Note:** Refer to the specification sheets at the end of this Guide for the exact cooling specifications for your particular camera model. Keep in mind that ambient temperature changes, air movement, and even relative humidity can affect the temperature that the camera can reach and maintain.

**Note:** The cooler is not designed to raise the temperature of the CCD above the temperature of the camera body, i.e. it cannot heat the CCD. If the ambient temperature is  $-10^{\circ}\text{C}$ , the cooler cannot bring the CCD temperature up to  $0^{\circ}\text{C}$ .

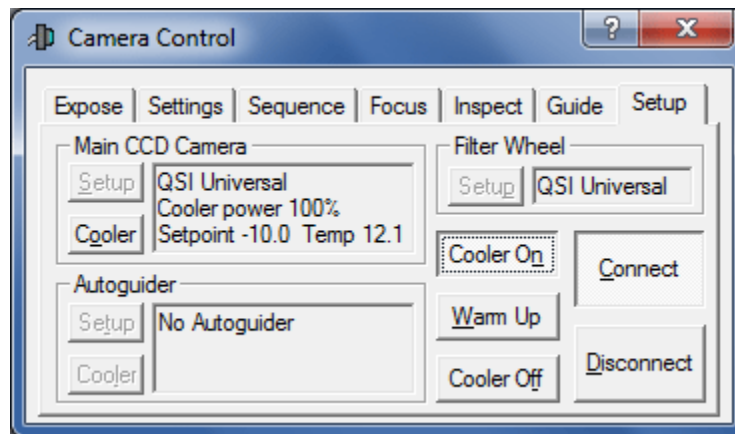
When using forced-air cooling the body of the camera and the window of the CCD chamber can be up to 12°C warmer than the surrounding ambient air temperature. By definition, the camera will be above the dew point (or frost point) and condensation will not form. When using the LHX there is the opportunity to drive the enclosure of the camera and the CCD chamber window significantly below ambient temperature if the recirculating water is colder than the surrounding environment. If the relative humidity is high enough, this action could drop the camera below the dew/frost point and condensation will form.

**Caution:** Do not allow excessive dew or frost to collect in or on the camera. Exercise the normal precautions that you would with any precision optical or electronic device. Never use the LHX to drive the camera temperature so low that liquid water forms on or in the camera. Under certain conditions excessive moisture can impair or damage the optical coatings and the internal electronics.

### Controlling the Cooler

The operation of the cooler is managed from your CCD imaging application. When power is first applied to your camera the cooler is in an inactive state. It must be actively turned on. The following explores the technical details of camera cooling utilizing MaxIm as the imaging application. For step-by-step operating instructions and changing the CCD setpoint temperature, see Section 4.

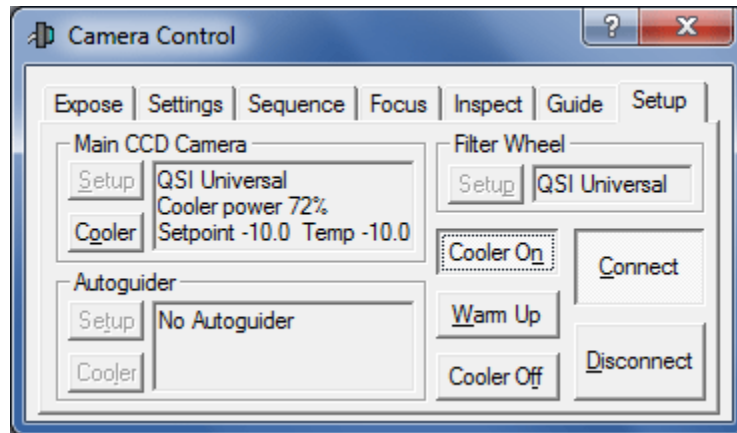
Below is a snapshot of the Setup tab in the Camera Control window, shortly after the Connect and then Cooler On button was clicked. Notice that the current CCD temperature is 12.1°C, the default Setpoint is -10°C, and that the cooler power is 100%



When the Cooler On button is clicked, the camera immediately starts cooling the CCD at full power. The cooler will stay at full power until it has cooled the CCD to within a few degrees of the setpoint temperature. The camera will then start adjusting the power applied to the cooler as it approaches the setpoint temperature. The displayed CCD temperature may slightly over-shoot the setpoint temperature as the regulation servo locks. It can take a

couple more minutes for the temperature servo to achieve a solid lock. After lock is achieved, the camera will keep the CCD temperature within 0.1°C of the setpoint.

The following is an image of the same Camera Control window 5 minutes after clicking the Cooler On button. Notice that the CCD temperature is now being regulated at -10°C and that the power level has settled in at a comfortable 72%.



**Note:** Depending on the ambient temperature and Cooler setpoint, the time to reach the setpoint temperature can take as long as 15 minutes. Once the CCD temperature has stabilized at the setpoint value, it is recommended to allow the entire camera an additional 5 to 10 minutes to reach thermal equilibrium.

**Note:** Best regulation is achieved when the power to the cooler is kept below 85%. This gives the camera some headroom to compensate for variations in the ambient temperature. If the camera cannot reach the desired temperature, it will keep trying by running the cooler at 100% power indefinitely. If the desired temperature hasn't been reached within 15-20 minutes, or the power level is above 85%, we recommend selecting a higher Setpoint temperature.

**Caution:** Be careful not to block free air movement around the camera, or any air flow through the fans and cooling fins on the rear of the camera.

QSI MF0500402J  
SN402-001203

QSI MF0500430B

SN424-001214

QUANTUM

5

4

3

2

1

IMAGING, INC.

Empty Filter Position showing closed shutter

Filter position numbers

1.25" Filter (Position #3)

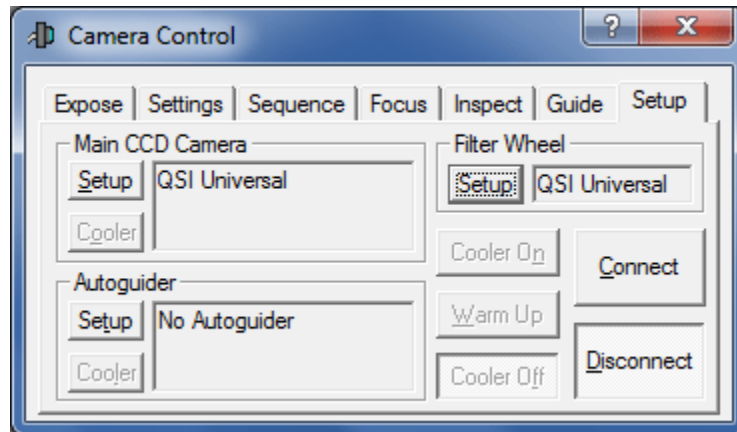
Filter Wheel Motor

**Note:** QSI offers LRGB filter sets from a number of respected manufacturers, as well as other specialized filters for astronomical and medical imaging. Alternatives can be specified at the time of order.

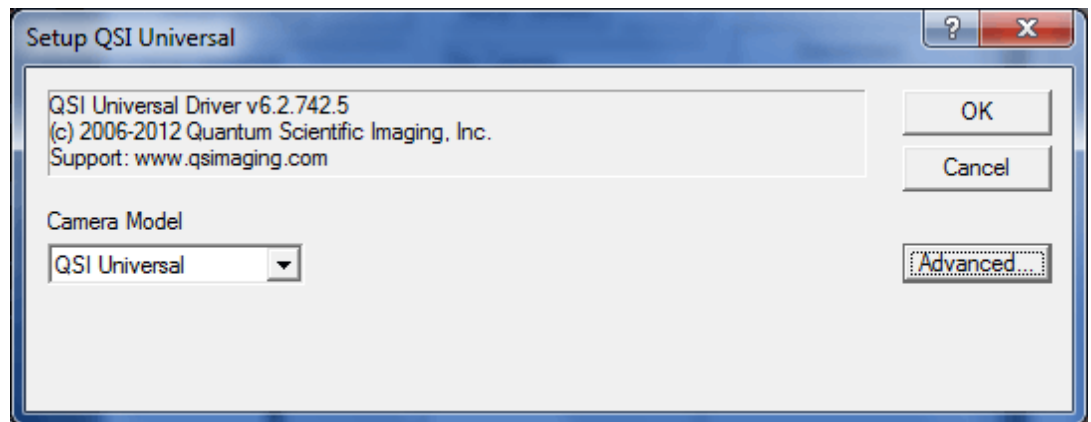
18

## Advanced Setup Options

The QSI Configuration dialog box is used to view or change camera settings that are seldom modified. Bring up the Camera Control dialog box and click the Setup tab. The camera must be disconnected to proceed further. If necessary, click the Disconnect button.

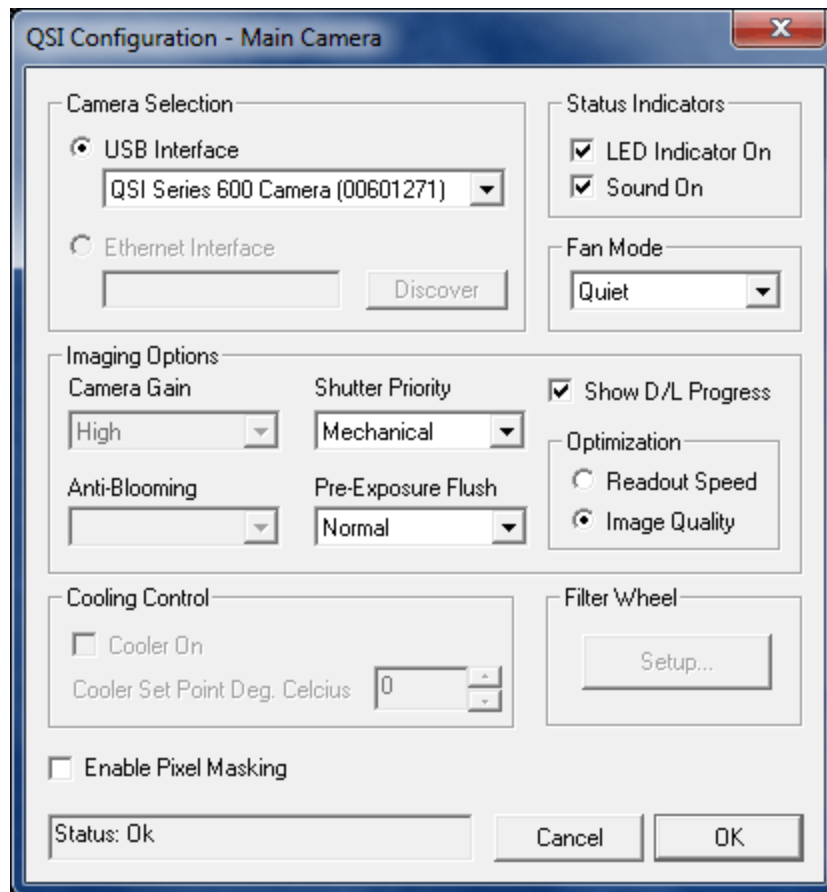


Click the Setup button in the upper left corner under "Main CCD Camera" to open the Setup QSI Universal dialog box for the Main camera. If the Camera Model list box does not indicate QSI Universal, select it now.



Click the Advanced button. The "QSI Configuration - Main Camera" window will appear as illustrated in the following image.

**Note:** If you are also using a QSI camera as an Autoguider, you can navigate to a similar window entitled "QSI Configuration - Guider Camera" by clicking the Setup button in the Autoguider field of the Camera Control window. The steps for configuring the Guider camera are identical to those for the Main camera.



**Note:** The very first time a QSI camera is connected to the computer it will set the relevant options shown above to default values based on the configuration of the specific camera. From that point forward, the settings are maintained in the Windows Registry. All subsequent changes are made to these Registry settings. This allows the computer to always know your last selections for each camera and restore them the next time you begin imaging. Also, a camera's settings are remembered uniquely when being used as a Main camera and when being used as a Guider camera.

Only those settings that are relevant to a particular camera model and software package are enabled. Options that don't apply are grayed-out.

### Camera Selection

#### USB Interface

Select the specific QSI camera that you wish to control from those listed in the USB Interface list box. Cameras are tracked by their serial number. That is the number located in parenthesis, and will match the number engraved on the camera nameplate / desiccant cover.

If a camera has previously been assigned to another role, it will not appear in the list. For example, if a camera is currently assigned as the Main camera, it will not appear as an option in the Guider selection list box.

Ethernet Interface Disabled on QSI RS Series cameras

**Note:** If only one camera is connected to the computer, the computer will always select that camera by default. You do not need to make the selection here. If two or more cameras are available and they match the serial numbers of the last camera(s) used for the Main and/or Guider camera, the computer will automatically reconnect to them in the same roles.

The only time you need to actively make a selection is when you have two or more cameras available and you want to:

- 1) Change the camera roles or
- 2) Select a new camera that has never been connected to this computer before.

## Status Indicators

LED Indicator On	Uncheck to disable the Status Indicator LED on the back of the camera. Only normal status indications are disabled. Visual indication of errors cannot be disabled.
Sound On	Uncheck to disable the Audible Beeper. Sounds associated with camera initialization and error notification cannot be disabled.
Fan Mode	<p>Can be set to Off, Quiet or Full-Speed. Quiet is the default setting and is sufficient in most situations.</p> <p>If Off is selected the fans are disabled unless the camera temperature begins to exceed a predefined safe level. At that point the fans are turned on and run at full speed until the camera temperature is reduced to a safe level. <b><i>Turning the fans off is only recommended when there is an alternate source of cooling such as an external fan or the when using the Liquid Heat Exchanger.</i></b></p> <p>When in Quiet mode the camera runs the fans at reduced speed for quieter operation. If more cooling is required to maintain the setpoint temperature, the fan speed is increased as needed to maintain the desired temperature.</p> <p>Full-Speed mode runs the fans at full speed.</p>



## Imaging Options

Camera Gain	Default setting is "High". This setting can only be changed on camera models that support switchable gain. With supported cameras, gain can be set to "High," "Low" or "Auto". "High" gain is recommended for 1x1 binning. "Low" gain is recommended for binning higher than 1x1 in order to utilize the full dynamic range of the CCD. "Auto" sets the gain automatically to "High" for 1x1 binning and "Low" for binning other than 1x1. Note: <i>Some camera control applications may offer additional methods of controlling the Camera Gain setting. See below.</i>
Shutter Priority	Settings are "Mechanical" or "Electronic". This setting can only be changed on cameras with interline transfer CCDs such as the QSI RS 2.0 or RS 4.2. In "Mechanical" priority the shutter is closed after each exposure. In "Electronic" priority the mechanical shutter is left open unless the camera is exposing a dark or bias frame. Electronic priority provides the highest possible frame rate when taking short exposures.
Anti-Blooming	Default setting is "Off". This can only be set to On with cameras that have CCDs with anti-blooming protection that can be controlled or adjusted electronically.
Pre-Exposure Flush	<p>This number determines how aggressively the pixels in the CCD are flushed between exposures. The default value is "normal". It can be lowered to decrease the time between exposures or increased if you want to ensure that the CCD retains less stray charge between exposures.</p> <p>When using full-frame CCDs such as in the QSI RS 0.4, RS 1.6 and RS 3.2, the Flush options correspond to 0, 1, 2, 4, and 8 flush cycles respectively. With interline transfer CCDs a variety of flushing techniques are used by the different Flush options to provide increasingly aggressive flushing of stray charge before beginning an exposure.</p>
Show D/L Progress	Check this box to enable reporting progress while an image is being downloaded from the camera. The default setting is "Off". If Show D/L Progress is enabled it will modestly increase the download time.
Optimization	Select "Image Quality" for the highest image quality or "Readout Speed" for the fastest possible downloads. Default is "Image Quality". This setting may be disabled on some cameras models which do not support multiple read modes. Note: <i>Some camera control applications may offer additional methods of controlling the Readout Mode Optimization setting.</i>

## Other Options

**Cooling Control**, **Filter Wheel** and **Camera Gain** will only be enabled in the Advanced Dialog Box when using Software packages that do not offer direct control of these features from within the application. If the options are grayed out you should change these settings using the features built into the application. Refer to the User Guide for your camera control application for details.

Some camera control applications, such as MaxIm DL Pro in this example, provide options for changing the Camera Gain and Readout Mode Optimization from the Camera Control Window and AutoSave dialog box. This allows those settings to be changed as part of an automated sequence.

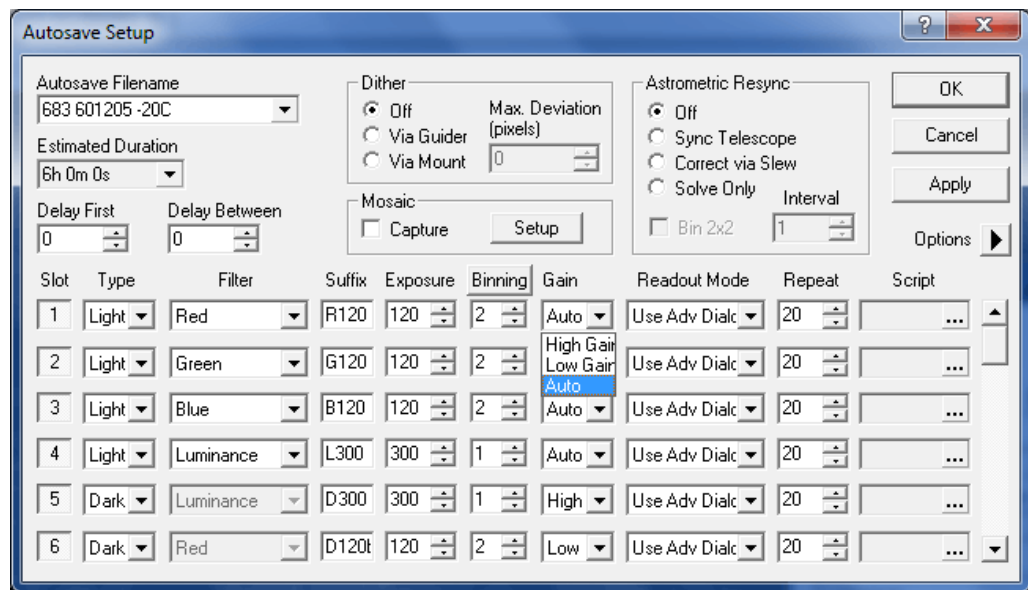
Gain offers three options:

1. High Gain      High Gain is optimized for 1x1 binning.
2. Low Gain      Low Gain is optimized for binning higher than 1x1.
3. Auto      Auto selects "High" gain for images with 1x1 binning and "Low" gain for images with binning higher than 1x1.

In the example below Gain is set to "Auto" for the Light frames in sequence positions 1 through 4, to "High Gain" for the bin 1x1 Dark frame in position 5 and to "Low Gain" for the bin 2x2 Dark frame in position 6. In most situations Gain can be set to "Auto."

Readout Mode Optimization offers three options:

4. Use Adv Dialog      Use the Optimization setting from the Advanced Dialog box.
5. Image Quality      Set Optimization to Image Quality – lowest noise.
6. Fast Readout      Set Optimization to Readout Speed – fastest downloads.



Cooling Control	For camera control applications that do not provide a way to enable cooling or control the set point temperature, cooling can be turned on by clicking the checkbox next to “Cooler On.” The desired temperature can then be set in the text box in degrees Celsius.
Filter Wheel	For camera control applications that do not provide a way to setup and/or control the filter wheel, click the “Setup...” button to assign names to the filter positions of your camera.

## Enable Pixel Masking

Enable Pixel Masking is an advanced function that does not need to be used under most normal circumstances. Click the “Enable Pixel Masking” checkbox to expose a table of pixel X, Y values (see dialog box below) Enter the X,Y coordinates of a pixel that you wish to be “masked” or ignored.

When a pixel value is “masked” its original value is replaced with a constant, typically 200. It can be used to replace the value of excessively bright or dark pixels with a known value. This function can sometimes be handy, for instance, when using guiding or focusing software the automatically selects the brightest pixel in the image. If the brightest pixel is a hot pixel rather than a star, then masking the pixel will allow the software to function correctly.

Some camera control applications offer more sophisticated methods of interpolating missing values from the values of surrounding pixels. See your software’s User Guide for additional details.

Click “Add Pixel” to add another entry in the Mask Pixels table. If a pixel entry is selected, the new entry will be entered above the current entry. If no pixel is selected, a new entry will be added at the end of the table.

Select a pixel X or Y value and click “Delete Pixel” to delete that pixel value from the Mask Pixels table.

**Note:** Pixel values are stored by camera serial number in the registry of the connected computer. If you have multiple QSI cameras, separate “Mask Pixel” tables will be automatically maintained for each camera.

**QSI Configuration - Main Camera**

**Camera Selection**

☒ USB Interface  
 QSI Series 600 Camera (00601271) [v]  
☐ Ethernet Interface [ ] [Discover]

**Status Indicators**

☒ LED Indicator On  
☒ Sound On

**Fan Mode**

[Quiet] [v]

**Imaging Options**

Camera Gain: [High] [v] Shutter Priority: [Mechanical] [v]  
 Anti-Blooming: [ ] [v] Pre-Exposure Flush: [Normal] [v]  
☒ Show D/L Progress  
 Optimization: ☐ Readout Speed ☒ Image Quality

**Cooling Control**

☐ Cooler On  
 Cooler Set Point Deg. Celcius: [0] [v]

**Filter Wheel**

[Setup...]

☒ Enable Pixel Masking

**Mask Pixels**

[Add Pixel] [Delete Pixel]

X Loc	Y Loc
375	1029

Status: Ok [Cancel] [OK]

**Advanced Dialog box showing the “Mask Pixels” table**

The current camera status is shown in the text field to the left of the OK and Cancel buttons.

Click the OK button to save your changes or the Cancel button to abort them. This will return you to the Setup QSI Universal window. Click OK again and you'll be returned to the Setup tab in the Camera Control window.

## Status and Notification

QSI RS Series cameras utilize a variety of methods to inform the operator of the camera's operation, status and other events. A built-in LED Status Indicator and audible Beeper provide notification at the camera. In the event of a serious internal error, the camera will also pass a descriptive error code back to the controlling application which then reports it to the user.

### Camera Status Indication

There is a small tri-state LED indicator on the camera back just above the connector panel. The LED indicates the current status of the camera and any operation that is underway. The LED can display green, yellow or red and flash at various rates.

#### Camera Operational State Indication

<b>Green solid</b>	In Idle state, not Busy. Ready to accept commands.
<b>Green flashing</b>	USB cable not connected. Not ready to accept commands. This only indicates that the USB cable is not physically connected between the camera and computer or hub.
<b>Yellow solid</b>	Busy with internal operation. Not ready to accept commands. This state is seen while the camera is performing power-up initialization, moving the filter wheel or shutter, or when uploading an image to the computer
<b>Yellow flashing</b>	Upgrading firmware. The indicator will flash rapidly while downloading the camera firmware and then more slowly as it is validated.
<b>Red slow flashing</b>	Exposing an image. Flashes once every 4 seconds. The camera can still respond to commands (such as abort image or read CCD temperature) while in this state.

**Note:** The Status Indicator can be disabled for the normal camera states described above. This may be desirable during long exposures where the light from the Status Indicator may be reflected into the telescope. See the Advanced Setup dialog box.

### Camera Error Indication

Camera error conditions are indicated by a more elaborate sequence of Red and Yellow flashes of the Status Indicator. Errors are classified as Soft errors or Hard errors. Soft errors are those that the camera can mitigate, but typically need operator action to resolve. Soft errors always begin with one Red flash followed by a number of Yellow flashes.

### Camera Soft Error State Indication

<b>Flash Red:</b>	<b>1</b>	
<b>Flash Yellow:</b>	<b>1</b>	The camera is over-temperature. Camera has exceeded the 40°C maximum recommended operating temperature for the internal electronics and enclosure. This sequence will repeat every four seconds as long as the camera remains “over-temperature”.
<b>Flash Red:</b>	<b>1</b>	
<b>Flash Yellow:</b>	<b>2</b>	The CCD is under-temperature. The CCD has exceeded the -40°C minimum recommended operating temperature. This sequence will repeat every four seconds as long as the CCD remains “under-temperature”.
<b>Flash Red:</b>	<b>1</b>	
<b>Flash Yellow:</b>	<b>3</b>	The camera DC supply voltage is below the 11V minimum recommended operating level. This sequence will repeat every four seconds until the supply voltage is raised above this threshold.
<b>Flash Red:</b>	<b>1</b>	
<b>Flash Yellow:</b>	<b>4</b>	The camera DC supply voltage is above the 14V maximum recommended operating level. This sequence will repeat every four seconds until the supply voltage is lowered below this threshold.
<b>Flash Red:</b>	<b>1</b>	
<b>Flash Yellow:</b>	<b>5</b>	The filter wheel has encountered a problem and is no longer operational. The camera will still function, but will no longer attempt to move the filter wheel. The filter wheel may be in any position. Power to the camera must be turned off and on to reinitialize the filter wheel.
<b>Flash Red:</b>	<b>1</b>	
<b>Flash Yellow:</b>	<b>6</b>	The shutter has encountered a problem and is no longer operational. The camera will still function, but will no longer attempt to operate the shutter. The shutter may be in any state. Power to the camera must be turned off and on to reinitialize the shutter.

Hard errors occur when the USB communication channel to the computer malfunctions or the camera has an unrecoverable internal error. The power to the camera must be turned off and on to reinitialize the camera and USB connection to the computer. This class of error is generally caused by problems with the USB connection between the camera and computer or software and firmware version incompatibility. Hard errors always begin with *two* Red flashes followed by a number of Yellow flashes.

### Camera Hard Error State Indication

**Flash Red:** 2

**Flash Yellow:** N The number of yellow flashes of the Status Indicator specifies the nature of the camera Hard Error. This code indicates the technical nature of the problem.

**Note:** Neither class of error indications can be disabled with the Advanced Dialog box. If you encounter any of these errors, make a record of the code flashed by the Status Indicator. This information will be useful if you need to contact QSI Customer Service.

### Audible Beeper

There is a small beeper located inside the camera that is used to provide notification of various events. Shortly after power is applied to the camera, the Beeper will make a short “chirp” sound indicating that the camera is entering the Initialization mode. Once the camera is fully operational the Beeper will make a “chirp-chirp” sound. At this point the camera is ready to communicate over the USB connection to the computer.

The Beeper is also sounded in sequence with the Status Indicator when any sort of error occurs. A long beep is sounded whenever the Status Indicator is displaying Red and a short beep when displaying yellow. This audible alert is intended to alert the operator in case the Status Indicator is not noticed or not visible.

**Note:** The Beeper disable function in the Advanced Dialog box does not apply to power-on initialization or error notifications. These events are always accompanied by the corresponding audible beeper sounds.

### Imaging Application Messages

The imaging applications (MaxIm LE, MaxIm DL, etc.) may display messages in response to activities performed with the camera. Many of these messages have straightforward text descriptions of the event. Others messages may include only a numeric code. If you get a message indicating an error, record the text message or numeric code in the event that you need to contact QSI Customer Support.

## CCD Imaging Overview

This section is intended only as a brief overview of CCDs and CCD Imaging. If you are new to CCD imaging there are a number of excellent books that you can use to gain a deeper understanding of the issues and techniques. The subject matter is discussed in the context of astronomical imaging, but the basic principles apply to any application.

### How CCDs work

Charge Coupled Devices (CCD) work by converting photons into electrons which are then stored in individual pixels. A CCD is organized in a two-dimensional array of pixels. The CCDs used in the QSI 500 Series cameras at the time of printing range from roughly 400,000 pixels (768W x 512H) to 8.3 million pixels (3326W x 2504H).

Each pixel can hold some maximum number of electrons. CCDs currently used in the QSI 500 Series can hold from 25,500 to as many as 100,000 electrons depending on the specific model of CCD. While integrating (exposing) an image, photons strike individual pixels and are converted to electrons and stored in each pixel well. The effectiveness of this process is referred to as Quantum Efficiency (QE). The number of electrons stored in each pixel "well" is proportional to the number of photons that struck that pixel. This linear response is one of the key traits that make CCDs exceptionally well suited to astronomical imaging. A subject that is twice as bright will build up twice as many electrons in the CCD. After an exposure is complete, the electrons in each pixel are shifted out of the CCD and converted to a number, indicating how dark or light each particular pixel was. Those brightness values for each pixel are then stored in the image file, typically a FITS file for astronomical imaging.

### Types of CCDs

CCDs are available in a variety of designs and technologies. QSI cameras currently employ two different types of CCDs, Full Frame and Interline Transfer, with numerous optional features.

#### Full-Frame CCDs

Full-Frame CCDs generally provide the highest sensitivity and the widest linear response range of these two types of CCDs. These characteristics make full-frame CCDs ideally suited to astronomical imaging. Full-frame CCDs must employ a mechanical shutter to prevent light from falling on the CCD surface while the image is being shifted out of the CCD.

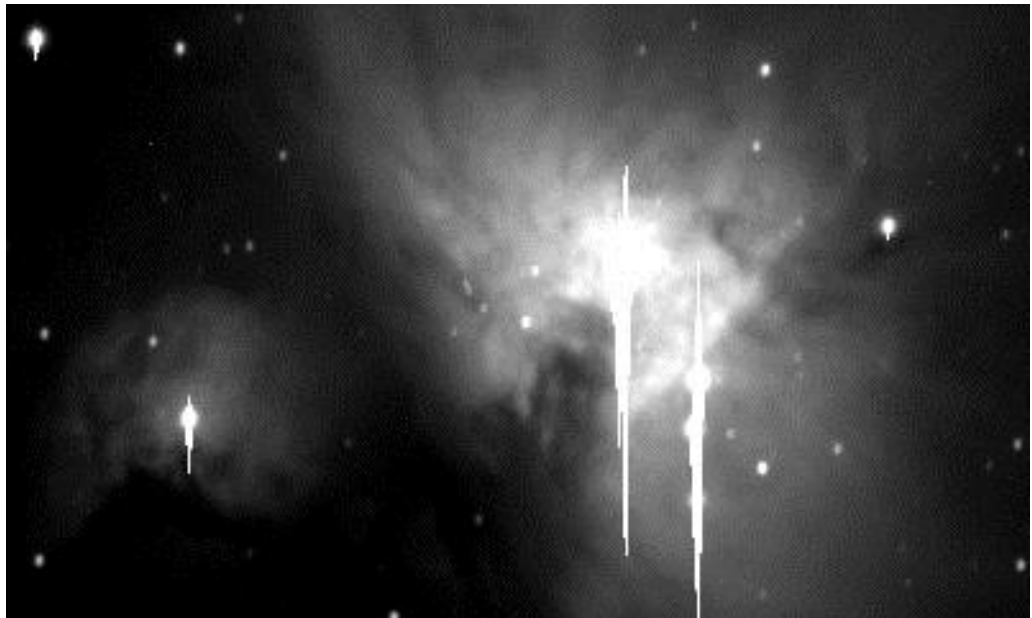


### Interline Transfer CCDs

Interline transfer CCDs work somewhat differently. In an interline transfer CCD, next to every column of pixels is a specialized storage column that is covered by a mask to prevent light from hitting the storage 'pixels' underneath. When an exposure is complete, the entire image is shifted in a single operation into this masked storage column. The pixels which are now under the mask stop building additional charge and are shifted out of the CCD in the same fashion as a full-frame CCD. Interline transfer CCDs give up some sensitivity because a sizable portion of the potential light gathering surface of the CCD is occupied by the masked storage columns. The key benefit of interline transfer CCDs is that the shifting of the image into the masked storage column acts like a very precise electronic shutter allowing short, accurate exposures.

### Anti-Blooming CCDs

CCDs are subject to an electronic artifact called "blooming" that results in bright vertical streaks leading from bright objects.



The 60-second image above shows a portion of M42, the great nebula in Orion. The stars that make up the center of the nebula are much brighter than the surrounding nebula. Taking an exposure long enough to show detail in the nebula causes the bright stars to bloom. Note that some of the other brighter stars around the image also show varying amounts of blooming.

Blooming occurs when taking images of bright objects because when a pixel reaches its full well capacity, say 100,000 electrons, the electrons literally overflow into adjoining pixels eventually causing them to fill and overflow as well. In a severely bloomed image, the bright blooming trail can lead all the way to the edge of the image. Data under a "bloom" is lost although there are a variety of processing techniques that can be used to hide pixel blooms in a final processed image.

Anti-blooming is a feature available on many full-frame and most interline transfer CCDs. Anti-blooming technology limits the number of electrons that can accumulate in a pixel by draining off excess electrons before they exceed the capacity of the pixel. This can increase

the dynamic range of the CCD by as much as 300 times or more. This increase in dynamic range greatly reduces the difficulty of imaging bright objects.

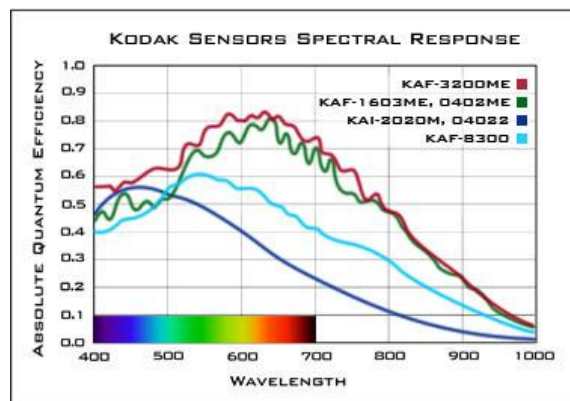
Anti-blooming CCDs make astrophotography more convenient, but with tradeoffs in quantum efficiency (QE) and linearity. Anti-blooming protection requires additional circuitry on the surface of the CCD, reducing the physical size and consequently the light gathering area of each pixel. Anti-blooming CCDs also have a non-linear response to light. This non-linearity becomes significant as a pixel fills beyond 50%. The closer a pixel gets to full-well capacity, the greater the rate of electron drainage in order to prevent blooming. This generally isn't a problem if your goal is producing great-looking pictures of the night sky, but anti-blooming CCDs are generally not appropriate for photometric and other scientific use where accurately recording the relative brightness of objects is important.

### Microlenses

CCDs only record the light that hits the photosensitive portion of the CCD. Most CCDs are "front illuminated" meaning that the light strikes the top surface of the integrated circuit forming the CCD. A portion of the surface of the CCD is covered with the electronic circuits that make a CCD work. Light striking a part of the CCD covered by a circuit will not get recorded by the CCD.

The surface of some CCDs is covered with microlenses which focus more of the light striking the surface of the CCD onto the photosensitive area away from the circuits.

The amount of the CCD surface covered in circuits is one factor in determining the quantum efficiency (QE) of the CCD. QE is a measure of how efficiently the CCD converts photons striking the CCD into electrons stored in any given pixel. QE varies by type of CCD and by the wavelength of light. Adding microlenses to a front-illuminated CCD will raise the quantum efficiency of the CCD. Typical peak QE values for the CCDs used in QSI 500 Series cameras range from 35% to over 80%. Microlens models tend to have the highest QE, while anti-blooming gate models tend to have the lowest QE. Here is a graph showing the QE of the CCDs available in QSI RS Series cameras at the time of printing.



Note that the non-anti-blooming, full frame KAF-3200 and KAF-1603 have the highest QE, peaking toward the red end of the spectrum around 650nm. The anti-blooming, interline transfer KAI-2020 and KAI-04022 have the lowest QE, peaking toward the blue end of the visible spectrum around 450nm.

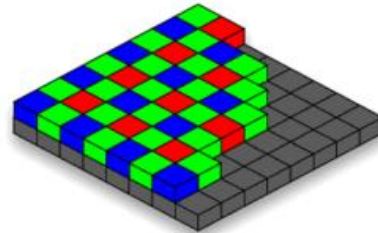
### Single-shot color CCDs

CCDs are inherently monochrome devices with varying response to different frequencies of light. That varying response can be seen in the quantum efficiency graph above. Color images are normally produced with CCD cameras by taking three (or more) images through

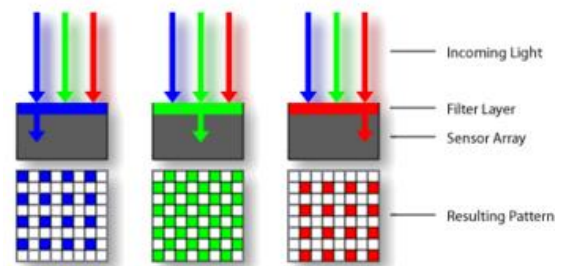
red, green and blue filters. The resulting images are then combined using computer image processing programs into a final color image.

Single-shot color CCDs, like those found in almost all general use digital cameras, are made by placing red, green and blue filters over adjacent pixels in the CCD. The image processing program then has to separate the three different color images and recombine them into a single color image.

Single-shot color CCDs use a “Bayer filter” with alternating red, green and blue pixels covering adjacent pixels in a checker board pattern as shown in the image to the right.



50% of the pixels are covered in a green filter, 25% are covered in a blue filter and 25% are covered in a red filter. This arrangement is used because the human eye is most sensitive to green light. The green pixels correspond to luminance and record the greatest detail while the red and blue filters record chrominance.



Courtesy Wikipedia

After the raw image is read from the CCD, a demosaicing algorithm must be applied to the image to produce a complete set of red, green and blue images by interpolating the missing pixel values. This is exactly what normal digital cameras do, but it's all hidden inside the camera's electronics. You only see the final processed image. With a CCD camera, the raw image is read into the camera control program and then processed on your computer. This has the advantage that you can directly manipulate the raw image to, for instance, vary the color balance.

Single-shot color models offer the easiest way to take color images of the night sky. The trade off is reduced QE and detail because of the demosaicing and pixel interpolation.

### Signal versus noise

For an astronomer, “signal” is the photons coming from the stars in the night sky. In an ideal world, there would be steady stream of photons from every bright object and every photon striking a pixel would be converted into exactly one electron in the CCD. Then the number of electrons would be precisely counted and converted to a number telling the photographer exactly how much light struck each pixel. Unfortunately, the process of converting light to pixel values in a CCD image is governed by some fundamental physical laws and other factors that introduce “noise” into an image. Noise is unwanted variations in pixel values that make the image a less than exact representation of the original scene.

Noise in CCD images can manifest itself in multiple ways, including “graininess” in darker background areas, “hot” pixels, faint horizontal or vertical lines that become visible in low signal areas of the image, blotchy gradients between darker and lighter regions in a nebula, a gradient from dark to light from one corner or side of an image to the other, and especially as low contrast images — the result of a reduced signal to noise ratio. Achieving high dynamic range, low noise images from a cooled CCD camera requires a basic understanding of how CCDs work and the different sources of noise that can reduce the quality of your images.

### Reducing noise in CCD images

CCD imagers have developed a standard set of calibration techniques to reduce or eliminate different types of noise from CCD images. Calibrating CCD images requires taking some special kinds of exposures that are then applied to the “light frames” taken of the night sky. The calibration frames are called Dark Frames, Flat Fields and Bias Frames. MaxIm LE and other CCD camera control software help gather these extra frames. After the frames are gathered, MaxIm allows you to calibrate your images either automatically or manually.

All the calibration frames should be collected during each imaging session with the CCD at the same temperature used for the light frames. This will ensure the best possible calibration of the final images. Many CCD imagers plan their night of observing to begin taking the calibration frames as dawn approaches. That way, you don't waste precious dark time.

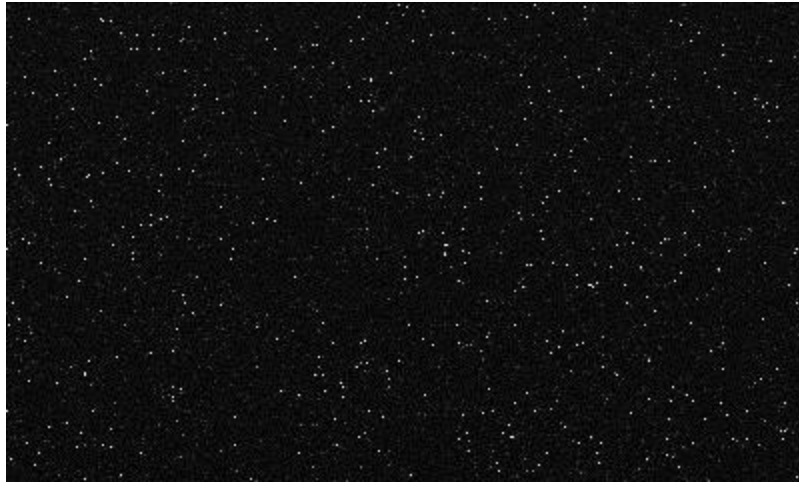


The image above is a single raw 6-minute image of the diffuse nebula M78 in Orion. Some bright stars are clearly visible along with some nebulosity but there are also scattered bright spots around the image caused by “hot” pixels.

### Dark Frames

Dark frames are used to subtract the buildup of dark current from a CCD image. Dark current is caused by heat. Similar to how CCDs convert the energy from a photon into a stored electron, CCDs also convert the energy from heat into stored electrons. CCDs build up “dark current” whether the CCD is being exposed to light or not. The rate that dark current builds up is dependent on the temperature of the CCD and can be dramatically reduced by cooling the CCD. Dark current builds up more slowly as the temperature of the CCD is reduced.

Most pixels on a CCD build up dark current at a constant rate but that rate will vary slightly from pixel to pixel. A subset of the pixels in a CCD will build up dark current at a dramatically different rate from the average. These pixels are called “hot pixels” or “dark pixels”. Hot pixels and dark pixels are both the result of slight imperfections introduced into the silicon substrate of the CCD during the manufacturing process. Hot pixels are very easy to see in a raw CCD image as a series of bright dots placed randomly around the image.



6-minute Dark Frame

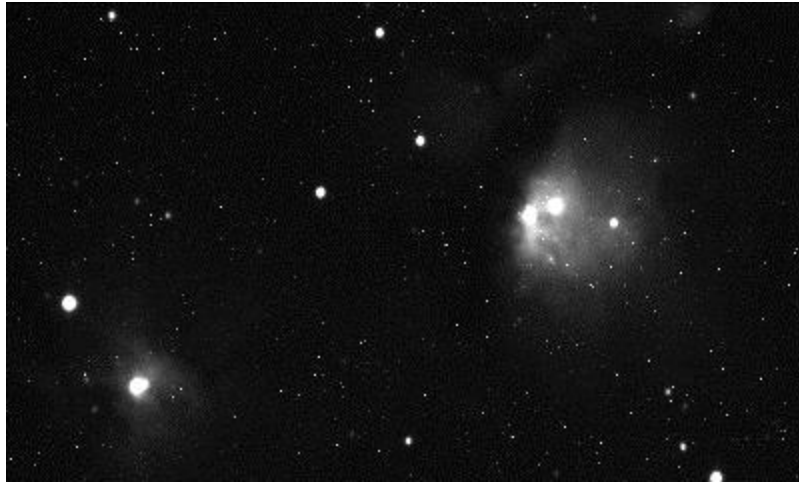
Above is a 6-minute dark frame taken during the same imaging session with the above image of M78. Notice the brighter pixels scattered randomly around the image.

**Note:** The pixel values in this image have been stretched significantly to show the variations in the dark frame. In reality this image is almost completely black with perhaps a few hundred “hot” pixels. This is completely normal and a natural consequence of how CCDs are manufactured.

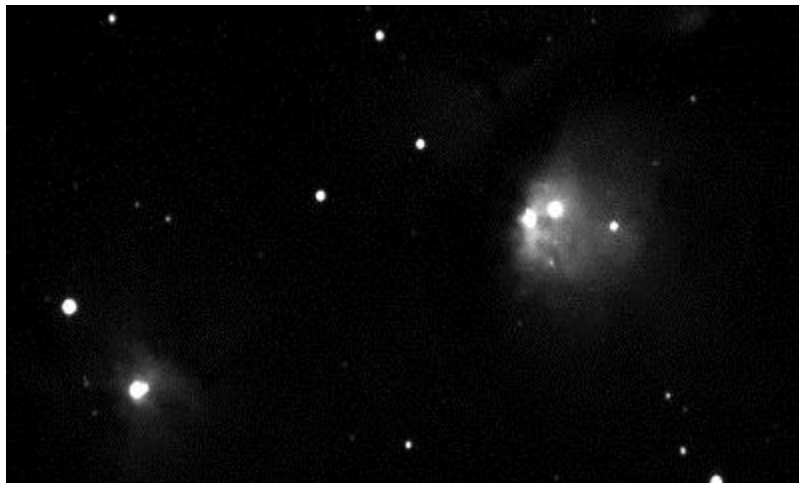
MaxIm LE automatically scales the visible range of pixels to match the underlying data. In the dark frame shown above the average pixel value is just 203 out of a possible 16-bit dynamic range of 0-65,535. Seeing an automatically scaled dark frame or bias frame can be a bit disconcerting for a new imager. Fear not, this “noise” will be almost completely eliminated by subtracting a dark frame from your images.

Dark frames are subtracted from a light frame to remove the dark current from the image. This subtraction removes the slight differences in dark current build-up from pixel to pixel along with the larger variations caused by hot or dark pixels.

In general you'll want to take at least 5 dark frames at each exposure used for your light frames. You'll get even better results with 9 or more dark frames. If all your light frames were taken with 5-minute exposures, you'll need to collect a set of 5-minute dark frames. If you took both 5-minute and 10-minute light frames, you'll need a set of 5-minute dark frames and a set of 10 minute dark frames. There is a way to reduce the number of dark frames you collect by using a set of bias frames but, in general, you'll achieve the best results taking dark frames with the same exposure as your light frames.



Original image



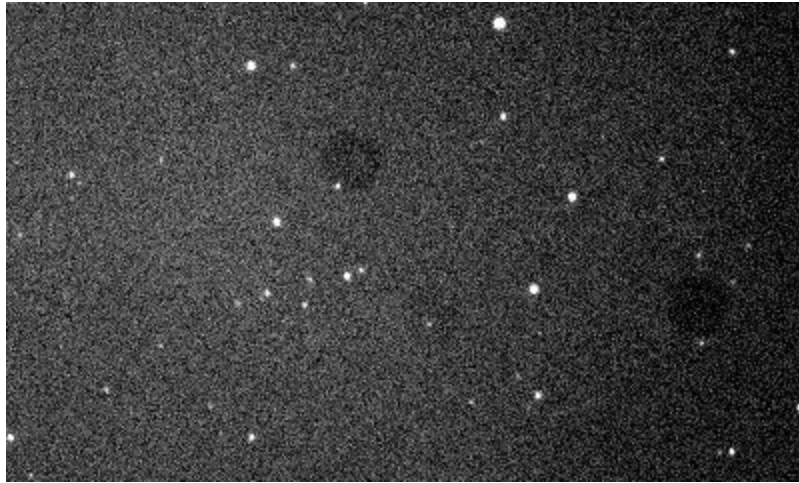
Original image minus dark frame

Look at the two images above. The top image is the original image as it came out of the camera. The bottom image has had the average of 5 dark frames subtracted from it. Note that the bright pixels have been virtually eliminated leaving a smooth black sky background.

### **Flat Fields**

Flat fields are used to correct for any irregularities in your optical system, such as vignetting or dust motes, and to adjust for any pixel non-uniformity inherent in the CCD. Pixels in a CCD all respond slightly differently to light, typically within 1% to 2% across a CCD.

All optical systems have a “signature” which gets recorded on the CCD. This unique signature is caused by how light travels through the telescope illuminating the CCD and how each pixel responds to that illumination.



The image above has been manipulated to highlight the effect of dust motes on a filter or CCD cover glass. Note the 3 darker circles. Because dust will tend to stay in one place over a night of imaging, the variation in pixel values caused by the dust can be easily eliminated by properly applying a Flat Field.

A flat field is created by taking an image of an evenly illuminated subject. There are four common ways to create flat fields.

- Lightbox flats – Using a lightbox is usually the easiest way to create good flat fields. There are a few commercial lightbox solutions, but many astronomers make their own. You can find plans in [The New CCD Astronomy](#) and [The Handbook of Astronomical Image Processing](#) as well as online. Search for “Telescope light box”.
- Twilight flats – There is a brief time after the sun sets or just before it rises when the sky is appropriate for creating flat frames. Too early and the sky is too bright. Too late and stars will begin to show up in the image.
- Dome flats – If your telescope is in an observatory, you can take dome flats. A dome flat is created by aiming your telescope at a white card placed somewhere on the inside of the dome.
- Sky flats – Taking sky flats requires taking dozens or hundreds of images with the telescope pointed at the sky with tracking turned off. All the images are combined into a master flat to remove the effect of any stars moving through the field. Sky flats require more time than the other three options so few amateurs take sky flats. We recommend reading the section on Sky Flats in the [Handbook of Astronomical Image Processing](#) for additional details on this technique.

Good flat fields require an exposure time such that the pixel wells are filled to approximately half their full capacity. With a QSI RS Series camera you should strive to achieve average pixel values between 20,000 and 30,000 out of a total of roughly 65,000. You should experiment with exposure times to yield that result. Pixel values are commonly called “ADUs”, short for Analog to Digital Units.

You'll need to take enough flat fields to average out the noise and then take a series of dark frames (called flat-darks) using the same exposure you used for your flat fields. Just as with light frames, the flat-darks are subtracted from the flat fields to remove any contribution from dark current. Taking 16 flat fields and 16 flat-darks will yield excellent results. Luckily



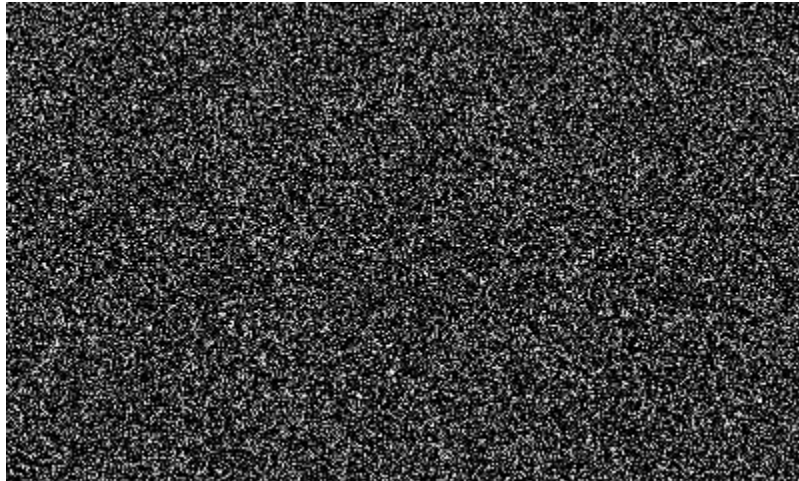
because flat fields tend to use fairly short exposures, you can often take a full series of flat fields and flat-darks in just a few minutes.

The resulting master Flat Field is used to scale the pixel values in the light frame, eliminating the effects of pixel non-uniformity, optical vignetting and dust on the optical surfaces.

### **Bias Frames**

A Bias Frame is a zero-length (dark) exposure intended to measure just the difference between the pixels plus any additional noise added during the process of reading the image from the CCD and converting it into a digital image file. Because the CCD pixels are emptied immediately before the image is read from the CCD, only a small amount of dark current has had a chance to build up, but that rate of accumulation varies slightly for every pixel. Also, reading an image from a CCD is not instantaneous. Pixels near the bottom of the CCD are read later than pixels closer to the top of the CCD so pixels toward the bottom tend to have slightly higher pixel values than pixels closer to the top.

One common use of bias frames is for scaling dark frames. By subtracting a bias frame from a dark frame, you end up with a “thermal frame.” A thermal frame contains pixel values showing just the effect of dark current. Because dark current in any given pixel accumulates at a constant rate, a thermal frame allows you to predict with reasonable accuracy how much dark current there would be for different length exposures. However, given the opportunity, you’re generally better off taking dark frames that match the exposure times of your light frames.



Here is an example bias frame. Note again that this image has been automatically stretched to show variations in the pixel values. MaxIm LE does this automatically when you view an image file. All the pixel values in the original image fall between 181 and 221 out of a possible range of 0-65,535, meaning that the unstretched image would appear almost perfectly and uniformly black.

Bias frames can also be used to analyze the read noise in a CCD camera. You can learn more about that process on the QSI web site at [http://www.qsimaging.com/ccd\\_noise.html](http://www.qsimaging.com/ccd_noise.html).

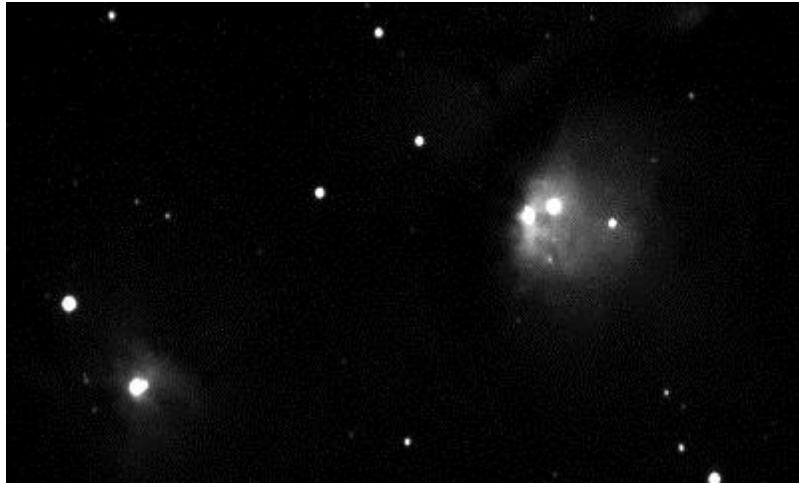
Taking bias frames is easy and takes only a couple of minutes. When you’re taking your dark frames and flat fields, also take a series of at least 16 bias frames. That completes your full set of calibration frames.



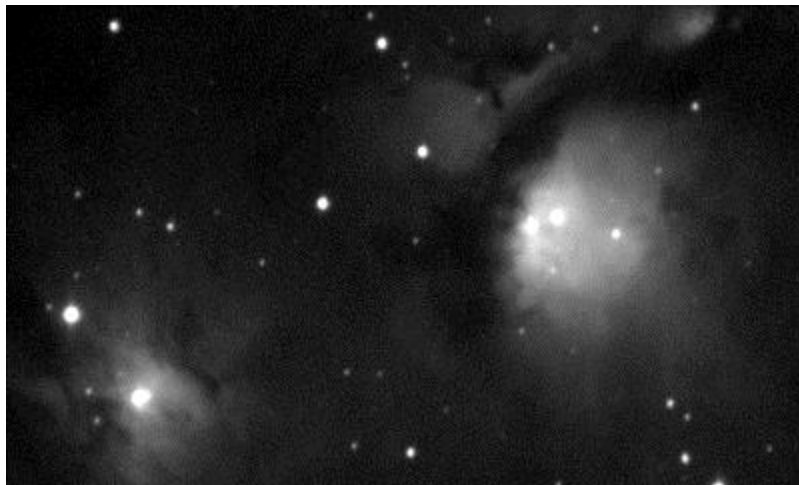
**Stacking Images**

After calibrating each of your raw images with dark frames, flat fields and bias frames, combining or “stacking” multiple sub-exposures can be used to further reduce the noise in your images. Stacking multiple images with a pixel-by-pixel average or median combine tends to increase the signal to noise ratio (SNR) of the combined image. This is because random variations in pixel values tend to cancel each other out when multiple images are combined, resulting in a smooth background, while non-random pixels, the bright objects in the night sky you’re trying to take a picture of, reinforce each other getting you closer to a true representation of the patch of sky you’re imaging.

The benefits of stacking images can be clearly seen by comparing an individual frame to a pixel-by-pixel average of multiple frames.



Individual dark-subtracted image of M78



Average combine of 9 dark-subtracted images of M78

Averaging 9 separate images increases the signal to noise ratio of the final image, allowing the faint nebulosity in M78 to become visible and smoothing the black sky background. Adding more frames would further improve the results although you do end up in a situation

of diminishing returns. Combining 18 frames will not yield a final image twice as good as combining 9 frames.

Also note that in some cases, doing a “median combine” rather than an “average combine” may yield better results. A median combine is recommended if several of the individual frames have unique anomalies such as bright pixels caused by cosmic rays, satellites, airplanes, etc. With at least 5 images, a median combine completely eliminates extreme pixel values that occur in individual frames.

### **Color images**

Unless you’re using a single-shot color camera such as the QSI RS 4.2ci, producing color images requires taking separate exposures through different colored filters and then electronically combining the separate color channels. The most common method used by amateur astronomers for color imaging is called LRGB, where separate color images are taken through red, green and blue filters and combined with a set of “luminance” images taken through a luminance filter. The luminance filter is required because CCDs are generally responsive to frequencies of light that can’t be seen by the human eye. The luminance filter blocks the infrared (IR) and ultraviolet (UV) frequencies that fall outside the range of human vision.

The luminance filter transmits most of the visible light coming from the object. Because the individual frames taken through the red, green and blue filters block roughly  $\frac{2}{3}$  of the total visible light, the luminance image will often reveal subtle details not apparent in the individual color frames. This actually works out quite well since the human eye is much more sensitive to changes in brightness than it is to changes in color. Combining a color-balanced RGB image with a luminance image will yield an LRGB image that the human eye would perceive as being very close to the true colors of the object with more fine detail than is present in the RGB image on its own.

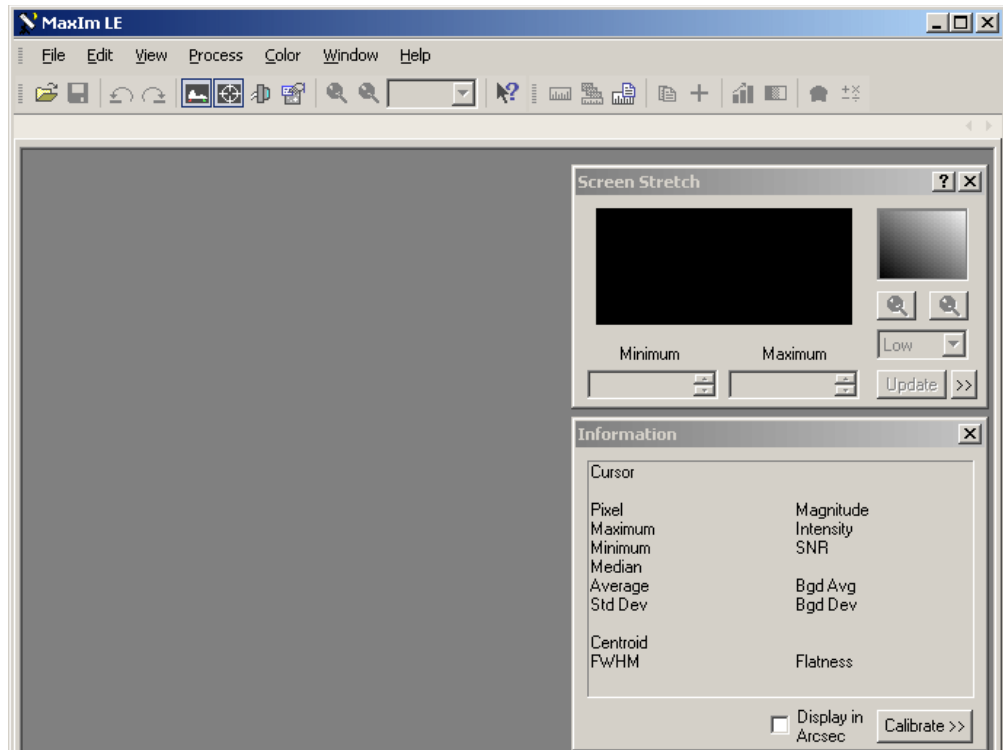
MaxIm LE can be used with your QSI RS Series camera to collect and catalog the various filtered images that you’ll need to create LRGB images. As with any images, you’ll want to collect multiple frames through each filter and then calibrate and combine them in order to reduce the major sources of noise. After calibration, you’ll have a master luminance image plus master red, green and blue images. Those master color frames are combined into your final image. In addition to the color image tools in MaxIm you can do further processing of your images in Adobe Photoshop or similar photo manipulation programs to yield impressive final results.

## Taking Images with your QSI RS Series Camera

### Launch MaxIm LE

**Note:** This section uses MaxIm LE as the camera control application. If you use a different camera control application, it will support similar operations.

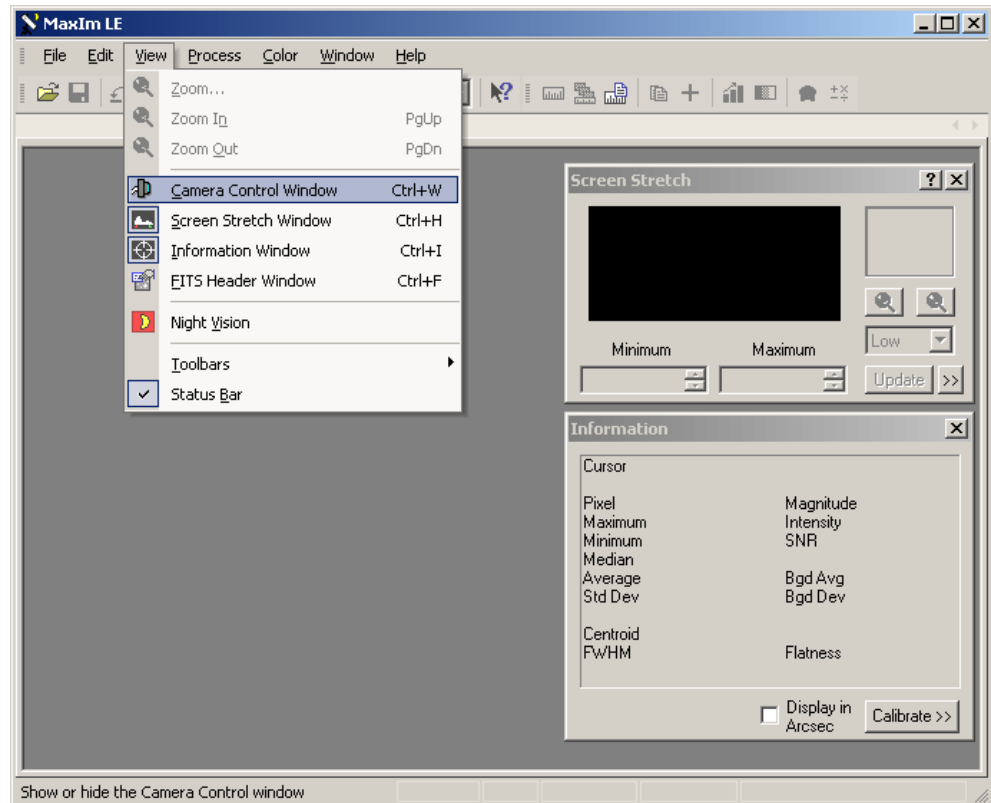
Launch MaxIm LE by double-clicking the MaxIm LE icon on your desktop or select “Programs > MaxIm LE > MaxIm LE” from the Windows Start menu. The MaxIm LE window should open looking similar to this:



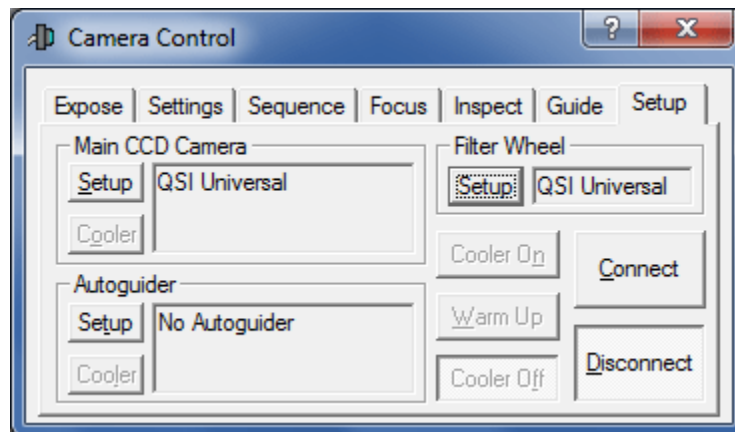
Your window may look slightly different. If the Screen Stretch and Information windows aren't open, open them by selecting "Screen Stretch Window" from the View menu, then selecting "Information window" from the View menu. You can move those windows around your screen to position them where they are most convenient.

## Camera Control Window

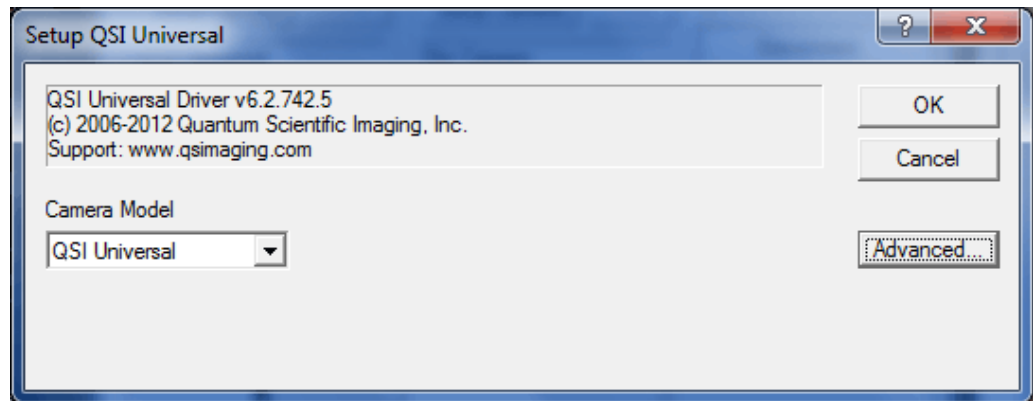
Select "Camera Control Window" from the View menu to open the Camera Control Window.



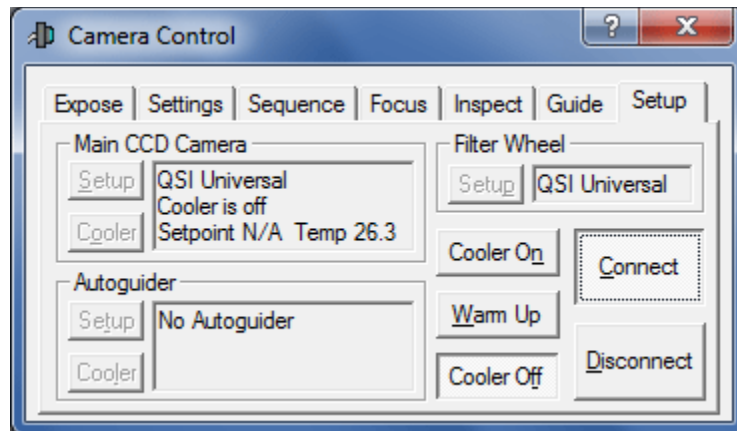
MaxIm should open the window and display the Setup tab. If another tab is displayed, click the Setup tab. MaxIm may recognize your QSI camera and automatically show it as the default camera in the Main CCD Camera field. If so, the Camera Control Window will look like this:



If you don't see "QSI Universal" listed in the Main CCD Camera field, click the "Setup" button in the upper left corner under Main CCD Camera. The window below will open. Select "QSI Universal" from the pop-up menu. Click OK.



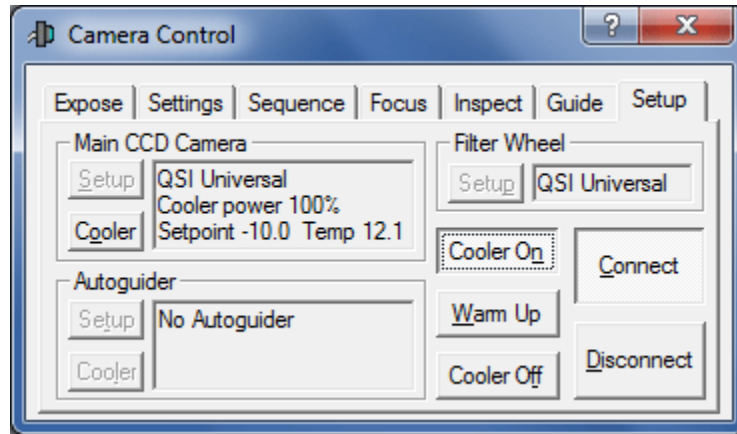
That will take you back to the Camera Control Window. Click the "Connect" button to establish communication between MaxIm and your QSI camera. If MaxIm connects properly the Camera Control window will look like this:



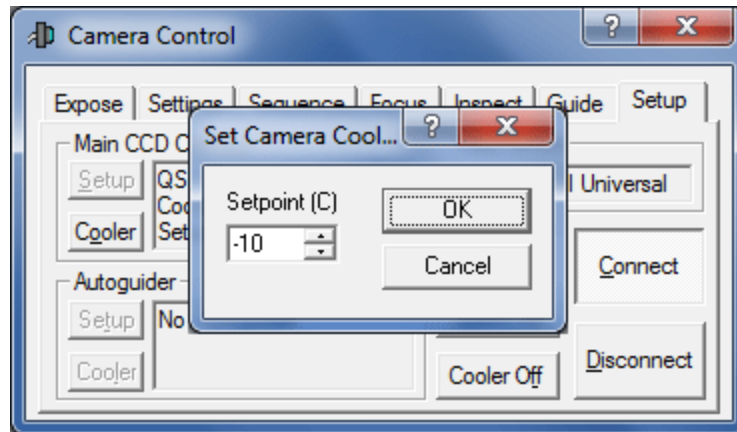
Note that the current temperature of the CCD is displayed in the "Main CCD Camera" field toward the upper left of the Camera Control window. The "Setpoint" is the temperature that camera will cool the CCD to, and may be different than shown above.

## Cool the CCD

To set the CCD cooling temperature you must first turn Cooling on by clicking the “Cooler On” button just to the left of the Connect button. After turning cooling on, the Camera Control window will look like this:

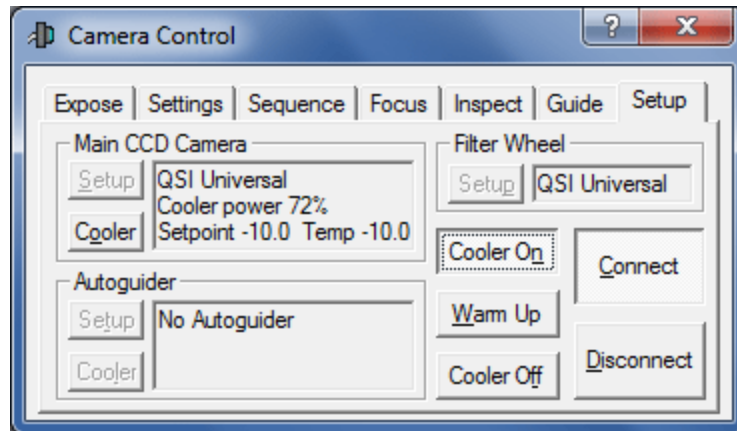


The camera will immediately begin cooling the CCD to achieve the current setpoint temperature. To select a different setpoint temperature, click the “Cooler” button at the bottom left of the Main CCD Camera field. That will open the “Set Camera Cooler” window on top of the Camera Control window.



Enter a new temperature in the Setpoint field and click OK.

The camera will automatically select the right amount of power to apply to the coolers to drive the CCD to the correct temperature. The Main CCD Camera field will show the CCD temperature setpoint, the current CCD temperature and the amount of power being applied to the CCD. The camera should reach the setpoint temperature and stabilize within 5 to 10 minutes depending on conditions and the amount of cooling required.

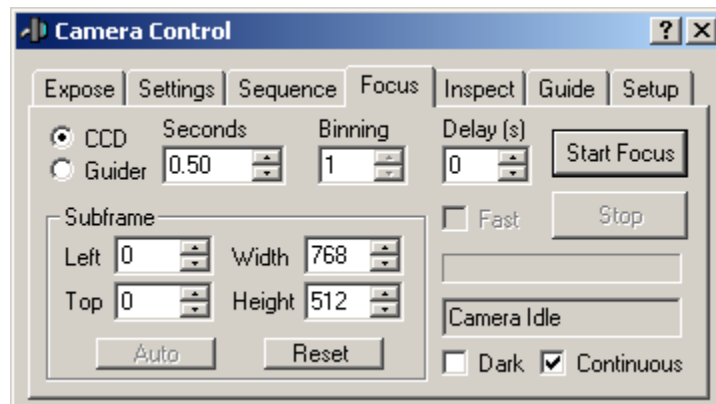


**Note:** Please refer to the **Cooling the Camera** discussion in Section 2 **Camera Features and Controls** for in-depth information on cooling your QSI RS Series camera and the available cooling options.

## Focusing with MaxIm LE

Achieving precise focus is critical for producing high quality astronomical photos. This seemingly simple task is surprisingly difficult when using the long focal lengths typical of astronomical telescopes. Fast telescopes with small focal ratios are great for astrophotography, but they make focusing even more of a challenge. The smaller the focal ratio, the shorter the critical focus zone. With some optical systems, the size of the critical focus zone can be less than 100 microns (0.1 millimeters), or roughly 0.003 inches.

MaxIm LE includes a Focus tab to assist with achieving critical focus. In the Camera Control Window, click the Focus Tab.



The Focus tab allows you to take a continuous series of short exposures while adjusting the focus of your telescope or other lens. As stars come into focus they produce a smaller disk

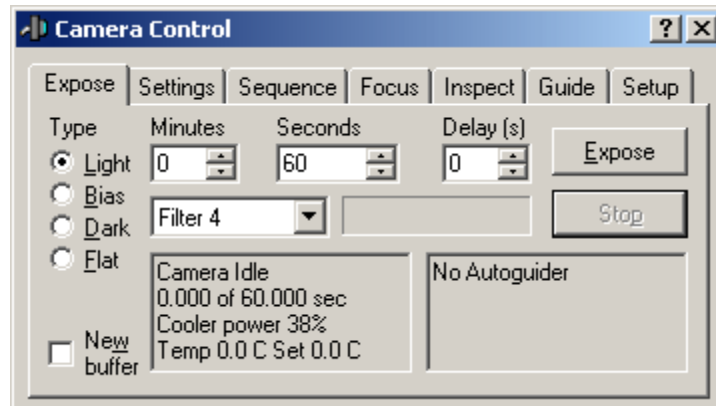
of light with more of the total light from the star being focused into a smaller area. The Focus tab window should be set as shown above. You may need to adjust the exposure time in the “Seconds” field to the time necessary to see a few bright stars. Setting the exposure time as short as necessary to see a few bright stars allows you take more focus images in a shorter period of time, generally allowing you to achieve reasonably sharp focus fairly quickly. When you are satisfied with the focus, click “Stop”.

**Note:** The Inspect tab next to the Focus tab can help you achieve critical focus by analyzing the area around the brightest point light source in an image. Review the MaxIm LE online help on focusing for additional details.

## Take a single image

After connecting to the camera, letting the camera stabilize at the desired temperature, and achieving critical focus, you’re finally ready to begin taking “light frames”.

Click on the Camera Control window to make it active. If the Camera Control window is not visible, select “Camera Control Window” from the View menu. Click the “Expose” tab. The window will look similar to this:



Click “Light” under the “Type” to select a “light frame.” If you have a camera with a color filter wheel, select the filter that you wish to use for this exposure. On a QSI 500 Series model with internal color filter wheel, Filter 4 by default contains the “L” or luminance filter. Set the exposure length in the Minutes and Seconds field.

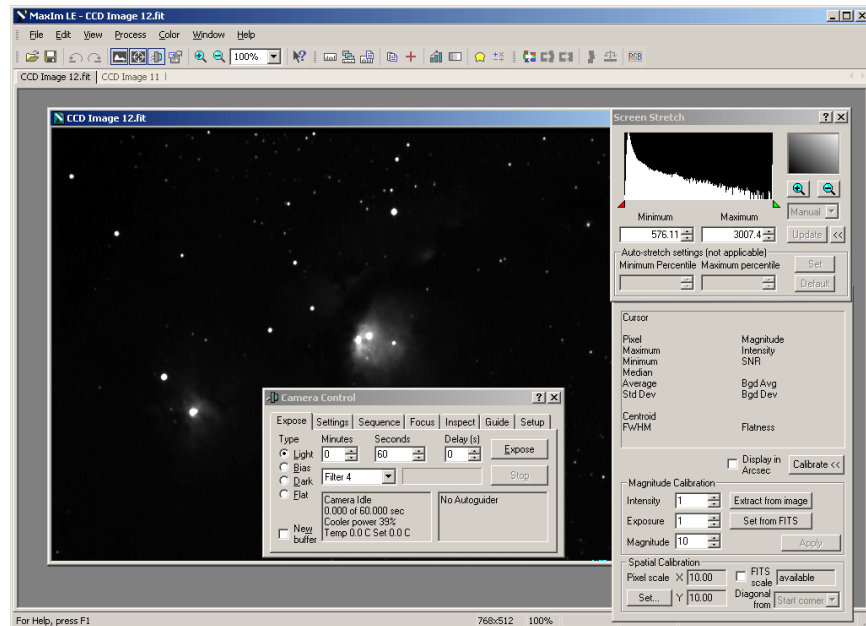
**Tip:** The Seconds field can accept values up to 32767 seconds so you won’t need to use the Minutes field unless that’s more natural for you.

When the settings in the Expose tab are set properly, click the Expose button to begin the exposure. While the camera is exposing the image, the Status LED on the back of the camera will flash red. When the exposure is complete the Status LED will flash yellow while the image is being downloaded.



## View the image in MaxIm LE

When an exposure has completed, MaxIm will automatically download and display the image in a new window.



After downloading the image, examine it to see if the target is properly framed and the exposure time is appropriate. The best astronomical images are achieved when the full dynamic range of the CCD is utilized.

If you like the image, save it by selecting “Save” from the File menu. If you need to adjust the framing, focus or exposure, make the necessary changes then click the “Expose” button again. When you’re happy with the image, save it with an appropriate name so you remember what the target, temperature and exposure settings were. After a long night of imaging, it is difficult to remember what settings were used with which image files.

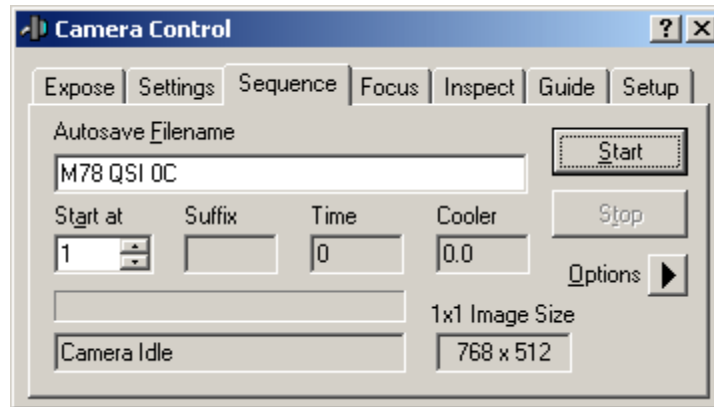
**Tip:** The FITS file format used as the default file format by MaxIm LE and most astronomical image processing programs stores a number of settings about the image inside the file. MaxIm LE automatically stores the exposure time, filter settings, and CCD temperature among other values associated with each image. MaxIm will also store your name, telescope specifications and location into the FITS headers if you first enter it in the FITS Header tab of the File > Settings... window. To see the information stored in the FITS header of an image file, select “FITS Header Window” from the View menu.

## Take a series of images

Achieving the best astronomical images generally requires gathering a lot of light. Taking multiple sub-exposures of, say, 5 minutes, is generally easier than trying to take a single 60

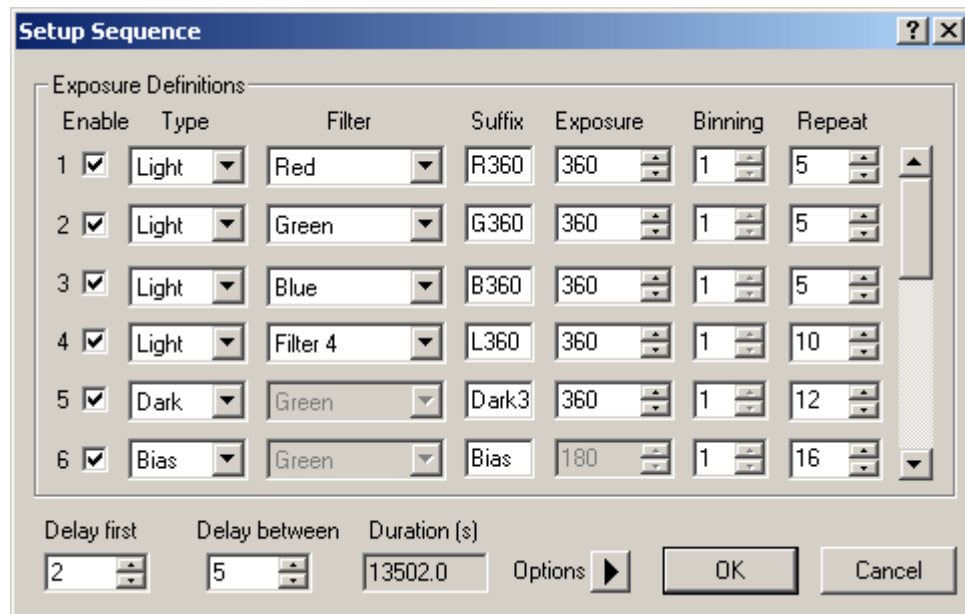
minute image. Tracking errors, improper polar alignment, airplanes, satellites, and cosmic rays all conspire to make it difficult to be successful with very long exposures. Plus it's a lot less frustrating to throw away one 5-minute exposure out of a total of 12 than a single 60-minute exposure.

MaxIm makes taking multiple sub-exposures easy. It's even possible to set up an entire night of images and then go to sleep. To set up a sequence of images, bring the Camera Control Window to the front and click on the "Sequence" tab.



Establish a base file name for the sequence of images by entering a text string in the "Autosave Filename" field. All the images taken in the sequence will begin with that base filename. Set "Start at" to 1. This determines the starting sequence number applied to each series of images.

Click the black arrowhead to the right of "Options" along the right edge of the Sequence tab window. The Options menu will popup. Select "Setup Sequence..." from the Options menu. This will open the "Setup Sequence" window.



The Setup Sequence window in MaxIm LE allows you to set up 16 different groups of images to take during a single automated sequence. In the window above, we show 6 different steps in the sequence. MaxIm LE will take five 360 second light frames each with the red, green and then blue filters, ten 360 second light frames with the luminance filter, 12 360 second dark frames and 16 bias frames. The total duration of the sequence is shown along the bottom under “Duration.” This sequence of images will take 13,502 seconds, or roughly 3 hours and 45 minutes.

The default behavior of MaxIm LE is to take one image in each grouping (e.g., one “R” image followed by 1 “G” image, etc.) cycling through all the active groups. If you prefer to take all the “R” images followed by all the “G” images, etc., click the black arrowhead next to Options along the bottom of the Setup Sequence window and select “Group by Slot”.

**Note:** The “Suffix” field will be appended to each image filename along with a sequence number. So the full filename of the first light frame taken through the red filter would be “M78 QSI 0C-001-R360.fit”. This name identifies the target (M78) the camera model (QSI), the CCD temperature (0C), the sequence number (001) and the filter and exposure length (R360). You can of course choose your own naming scheme.

When you’ve setup the sequence of images you wish to take, click OK to return to the Camera Control window. Click the “Start” button to begin the sequence. All the images in the sequence will be run automatically, including moving the filter wheel to the appropriate filter, until the sequence is complete. You are free to perform other tasks, or even take a nap, until the sequence completes. Review the MaxIm LE online help regarding Sequences for additional details. Other programs such as MaxIm DL may offer additional options in setting up image sequences. See the software application documentation for complete details.

## Image Calibration

Image calibration is the process of removing or reducing predictable types of noise and variations in pixel brightness not caused by light from your subject striking the CCD. The calibration frames should include:

1. 5 or more Dark frames  
You’ll want at least 5 dark frames taken at each exposure length used for your light frames. If all your light frames were taken with a 5-minute exposure you’ll only need one set of dark frames. If you took 2-minute, 5-minute and 10-minute exposures you’ll need a set of dark frames for each exposure length.
  2. 16 Bias frames (for scaling dark frames if necessary)
- Plus optionally...**
3. 5 or more Flat field frames

**Note:** If you took images through different filters, for the best results you’ll want separate flat fields with each filter to record the unique optical signature produced through each filter.

#### 4. 16 flat-darks

The above numbers represent the minimum of each type of frame you should use. Taking more of each type of frame will further reduce the noise present in each calibration master image and improve your final results.

*Why* you take different types of image calibration frames was discussed in some depth in the CCD Imaging Overview section. This section covers *how* to take the required calibration frames.

### Dark Frames

Dark frames are used to subtract the build-up of dark current from raw CCD images. Subtracting dark current is generally considered the most important image calibration step.

In the previous section, we showed how to use the Sequence tab to automatically take a sequence of images. Adding the required dark frames to an automated sequence is often convenient because taking dark frames consumes a lot of time. You need at least as many dark frames as you take for each type of light frame, twice as many darks is even better. Taking the dark frames in the same sequence as the light frames also ensures that the environmental conditions are as close as possible to the conditions when you took the light frames. This ensures the closest match when subtracting dark frames from light frames.

An exception to this rule is if all the dark time during the night is reserved for taking light frames. Dark frames can be taken after the sun starts to light up the sky as long as no stray light reaches the CCD and the camera can maintain the same CCD temperature as the morning air starts to heat up.

To take a series of dark frames, either add them as an additional group in the Setup Sequence window or setup a new sequence of just dark frames at a convenient time during the imaging session. If you're taking 5 exposures each with the R, G and B filters, take at least 10 dark frames using the same exposure. Taking more dark frames reduces the noise in the combined dark master, producing higher quality images.

### Bias Frames

Bias Frames record just the subtle variations in the zero level of each pixel plus any noise introduced when reading the image from the CCD. Taking a complete set of bias frames takes only a couple of minutes so in general you should plan on always taking at least one set of bias frames during each imaging session.

To take a series of bias frames, either add them as an additional group in the Setup Sequence window, or setup a new sequence of just bias frames at a convenient time during the imaging session. Take at least 16 bias frames at the same temperature as your light and dark frames.

### Flat Fields

Flat fields record any irregularities in your optical system, such as vignetting or dust motes, and the slightly different light sensitivity of each pixel on the CCD. Some astroimagers consider flat fields to be optional. While calibrating images with flat fields does not have as dramatic an effect on CCD images as applying dark frames, flat fields are nevertheless important for producing the best images with even illumination and the highest possible signal to noise ratio.

Most astronomers take their flat fields either in the evening before the sky gets completely dark or in the morning as dawn approaches. If you're taking twilight flats the timing of those

images is critical as you have only a few minutes when the sky is appropriate for taking twilight flats. As with dark frames and bias frames it is important that flat field frames are taken with the CCD at the same temperature as your light frames. If you're taking LRGB or other filtered images, ideally you should take a set of flat fields through each filter.

Setup your telescope and possibly your light box to take your preferred style of flats. Adjust the exposure so the average pixel is filled to approximately half its full well depth. With QSI 500 Series cameras you should strive for pixel values of roughly 30,000 ADUs. As with dark frames, you should take at least as many flat frames as the light frames you took through each filter. Taking additional flat fields will produce a master flat with less noise, yielding higher quality images. **Do not change your focus.** To get correct flat fields, it is important that the focus be identical to the focus used for the light frames.

### Flat Darks

As with any exposure using a CCD camera, dark current builds up while taking a flat field image therefore the dark current must be subtracted with a dark frame taken at the same exposure as the flat field. Taking flat-darks is easier and less time consuming than regular dark frames because the exposure time of flat field images is typically much shorter than your light frames. If you take flat field images, it is critical that you also take a series of flat-darks. They're easy to take with the shorter exposure, so take at least 15 flat-darks.

## Manual Image Calibration

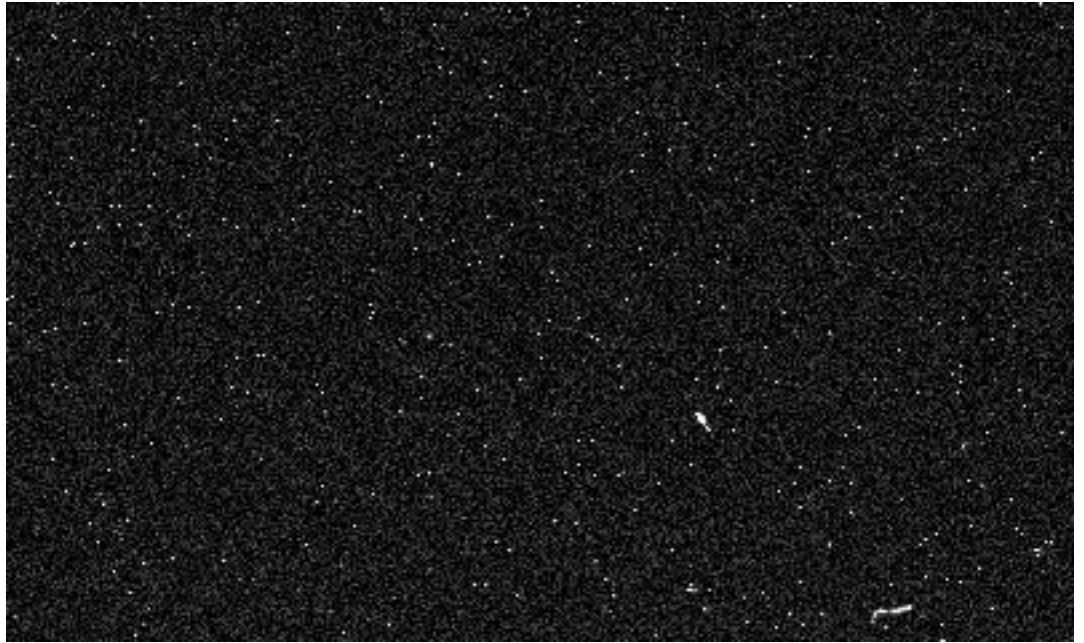
MaxIm LE supports both automatic and manual image calibration. This section describes basic manual image calibration in MaxIm LE. For complete instructions on calibrating images, please see the online help in MaxIm LE.

### Subtract Dark Frames

Begin by creating a master Dark Frame for each exposure length. A master dark frame is created by combining all the individual dark frames using an average or median combine. See the section below **Combine Frames in MaxIm LE** for detailed instructions on combining multiple images.

**Tip:** In general, an average combine of multiple images will yield a combined image with slightly less noise than a median combine, but this requires that none of the frames being combined have any anomalous groups of light or dark pixels caused by, for instance, cosmic rays.

Other programs, such as MaxIm DL, include additional combine methods that attempt to provide the low noise of an average combine with the anomalous pixel rejection of a median combine. You will need to experiment to achieve the best results.

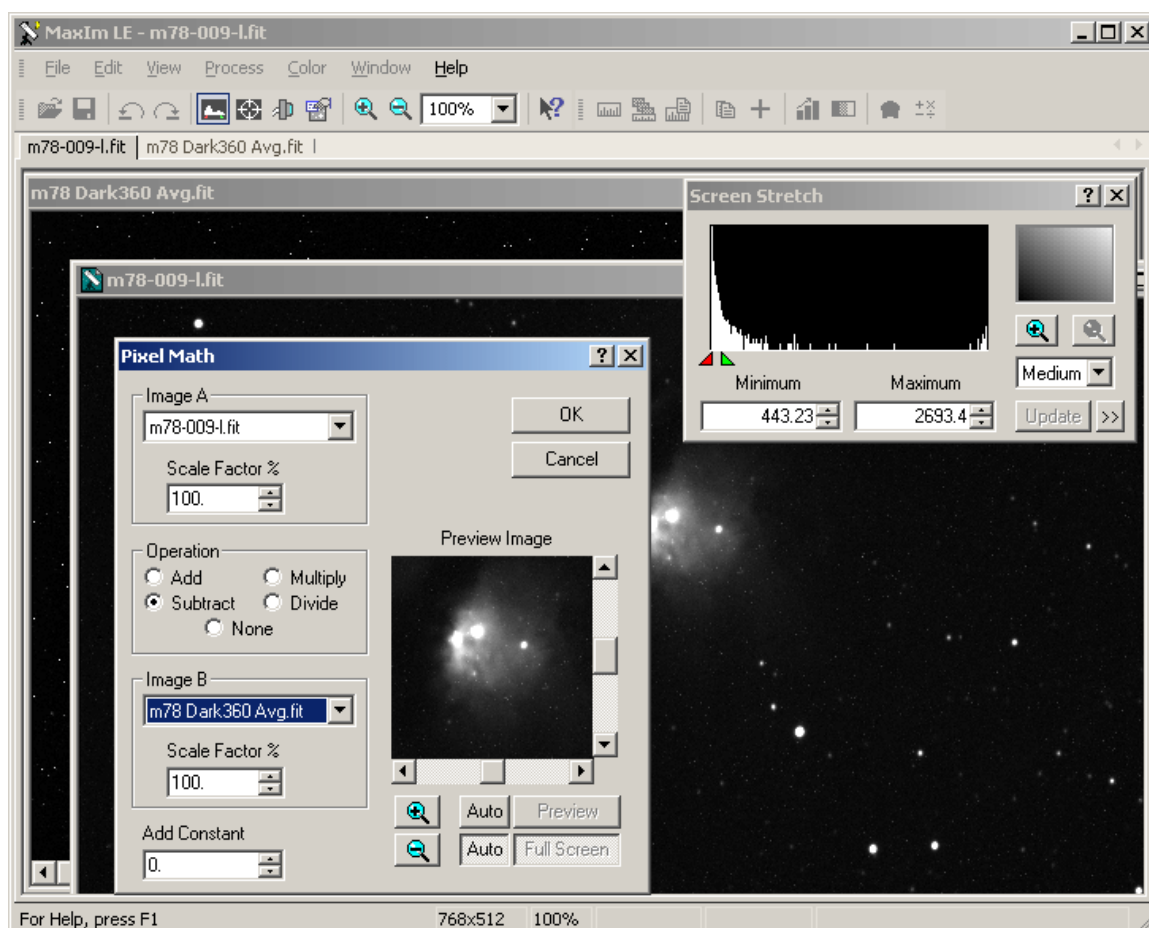


Dark frame showing two cosmic ray hits in lower right hand quadrant

Inspect your dark frames for cosmic ray strikes or other anomalous pixel groupings. The dark frame above shows two cosmic ray hits in the lower right quadrant of the image. Cosmic rays are energetic particles originating from somewhere in space. They can come from any direction and depending on the angle that they strike the CCD can be very long if they are nearly parallel with the CCD or just a bright circle if they strike perpendicular to the CCD.

If multiple dark frames in your set each have cosmic ray hits, doing a median combine of all the images may yield a better combined image than averaging just the clean frames. Experiment to get the best results.

After you've created your master dark frame for a given exposure length, subtract it from each of the light frames with that same exposure. Do this by selecting "Pixel Math..." from the Process menu.



Screenshot showing Pixel Math command ready to subtract a master dark frame.

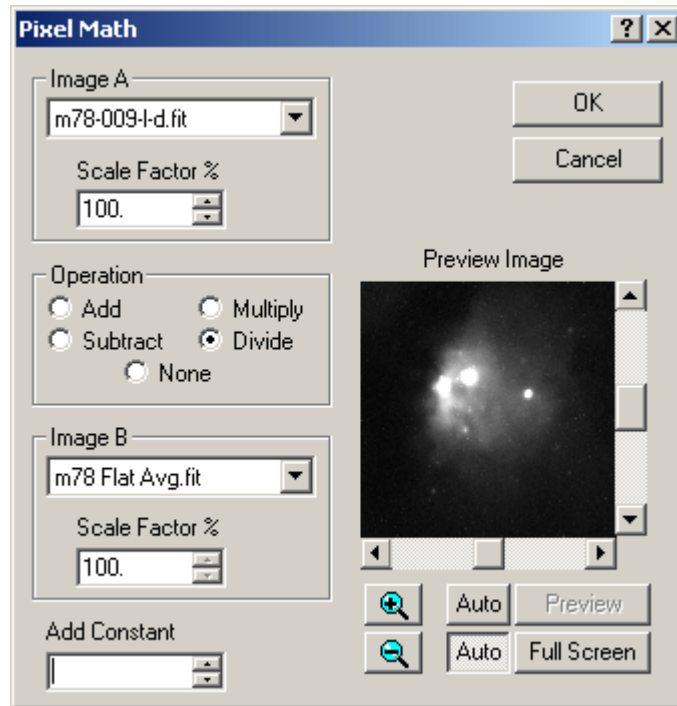
Select your light frame for Image A at the top and your master dark for Image B. Select “Subtract” for the operation. Click OK. You should see many of the bright pixels scattered around the light frame, disappear or get visibly darker. Do this with each of your light frames. After dark subtracting the individual light frames, the light frames can be combined into a master light frame. If you took multiple images through different filters you will need to create a master light frame for each color.

### Scale by Flat Fields

Scaling dark subtracted images by flat fields follows a similar process to subtracting dark frames.

**Note:** Taking proper flat fields can be tricky. If the flat fields aren’t exposed and processed properly, scaling an image by an improper flat field can produce results worse than not calibrating with flat fields at all. Experiment and practice for the best results.

1. Produce a master dark flat following the steps above for creating a master dark frame.
2. Subtract the master dark flat from each of the flat fields.
3. Produce a master flat field by averaging the dark-subtracted flat field images.
4. Finally, divide the master flat field image into each of the dark-subtracted light frames.



Save the resulting images with names that identify the frames as dark subtracted and scaled by a flat field.

See the section below **Combine Frames in MaxIm LE** for how to combine the now calibrated individual frames into a master light frame. If you took multiple images through different filters, you'll need to create a master light frame for each filter (e.g., red, green, blue, luminance for LRGB images).

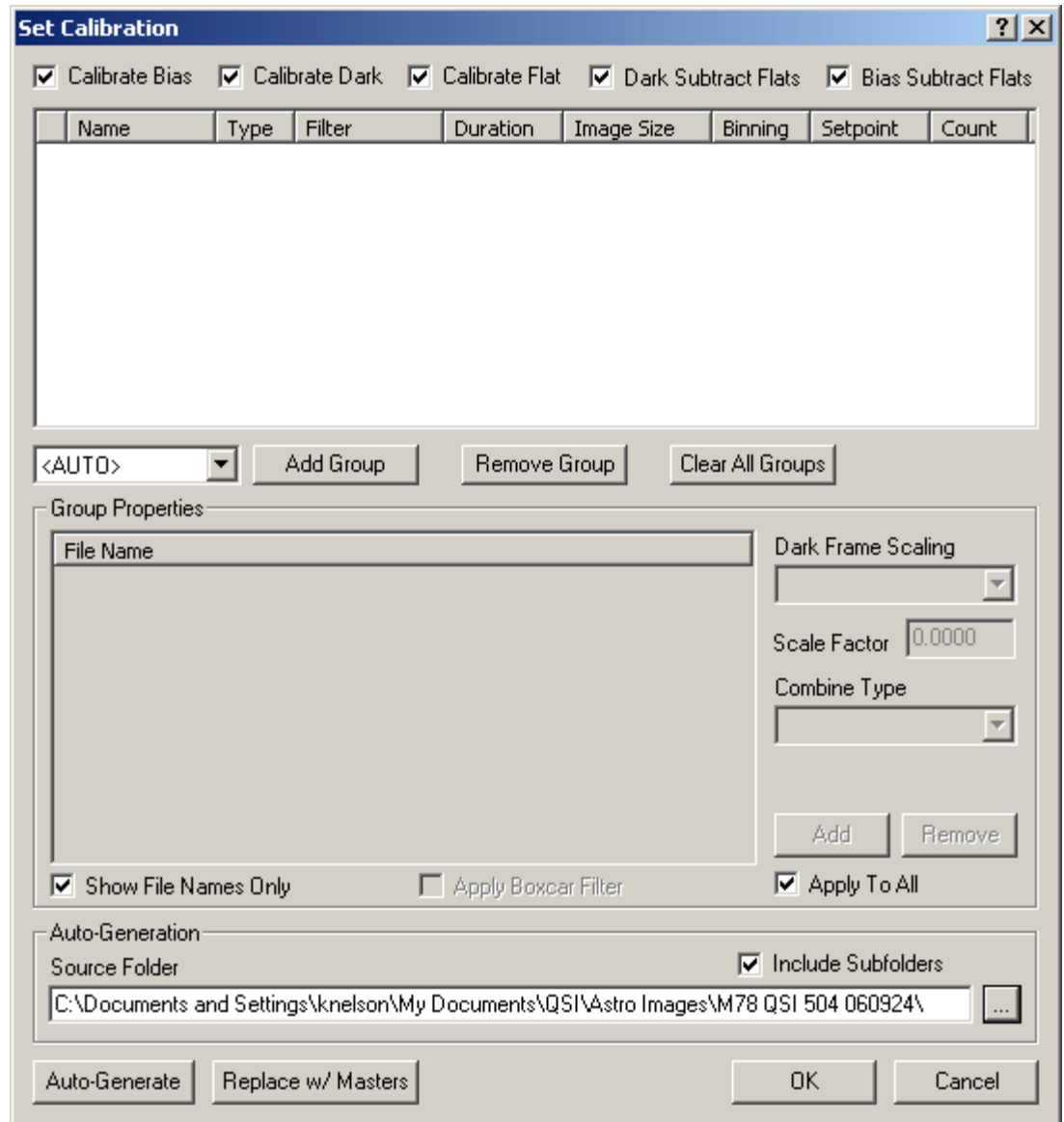
## Automatic Calibration in MaxIm LE

The section above described manual image calibration in MaxIm LE. This section describes using automatic image calibration in MaxIm. Many astrophotographers prefer to do all their image calibration manually in order to maintain the greatest control over the calibration process, but used properly, automatic image calibration can save significant amounts of time and yield excellent results. For complete instructions on calibrating images, please see the online help provided with MaxIm LE.

Begin by gathering all of your calibration frames into the same directory as your light frames. This makes it easier for MaxIm to automatically find and characterize each of the calibration frames.



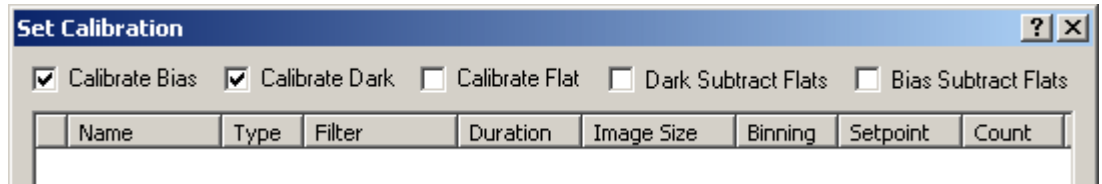
Launch MaxIm LE. Choose “Set Calibration” from the Process menu. That will open the Set Calibration window.



By default, MaxIm expects to calibrate images with bias frames, dark frames and flat fields. For this example we're only going to show calibrating with bias frames and dark frames.

**Note:** MaxIm also has a Calibration Wizard that steps you through the process of setting up your image calibration. For details on the Calibration Wizard please consult the online help in MaxIm LE.

If you're not calibrating with flats, as in this example, uncheck the three “Flat” checkboxes along the top of the Set Calibration window.



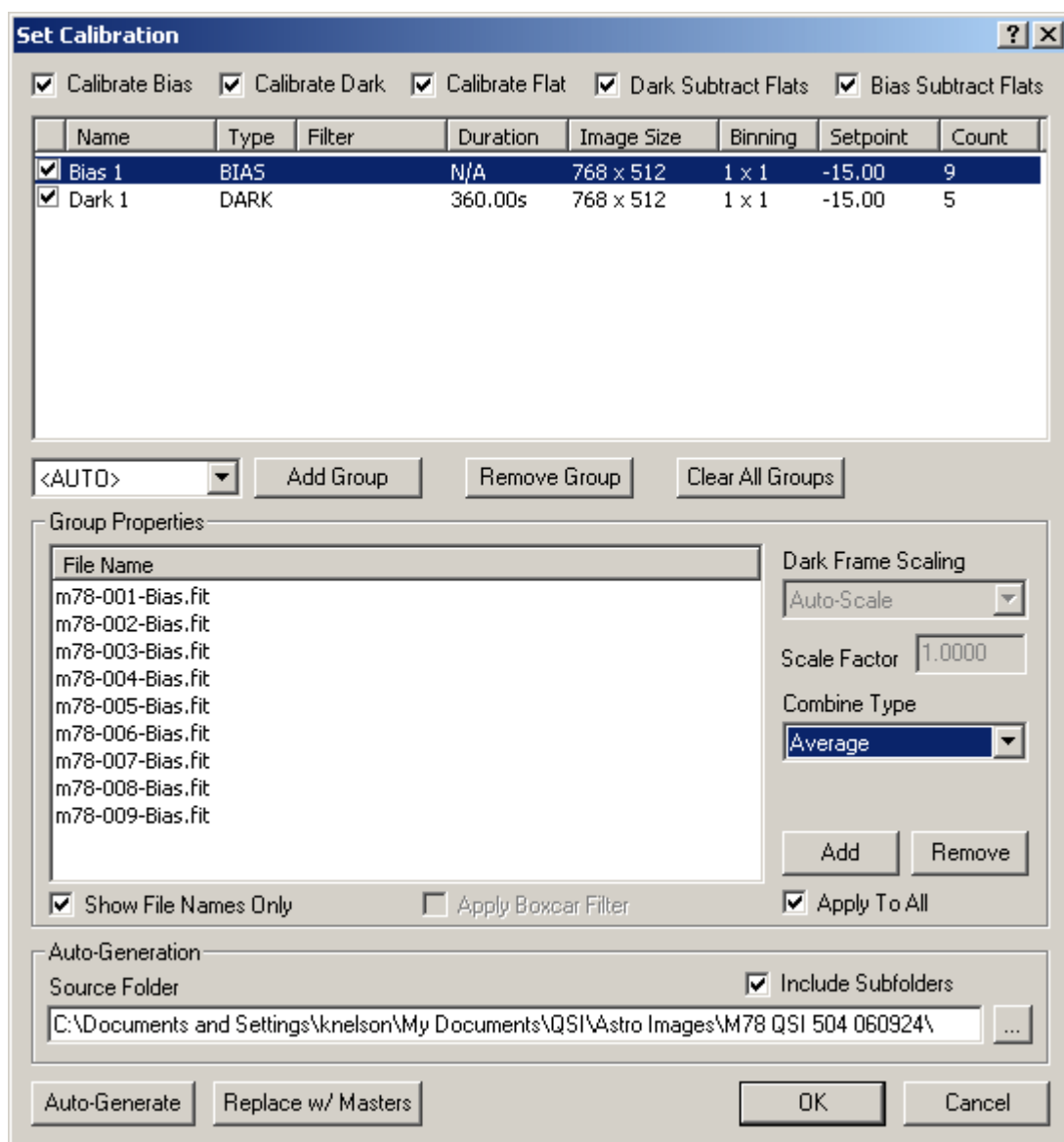
In the “Auto-Generation” panel near the bottom of the window, click the “...” button to the right of the text field and navigate to the folder that contains your images. In this example the images are contained in:

My Documents\QSI\Astro Images\M78 QSI 504 060924\

Click the checkbox next to “Include Subfolders” if you’ve organized the images and calibration frames into subfolders within the main folder.

Click the “Auto Generate” button in the lower left-hand corner of the Set Calibration window. MaxIm will search the specified folder for any calibration frames and automatically organize them into different calibration groups based on the type of frame, length of exposure, CCD temperature, etc. This is possible because the FITS file format records all the information about each image in the FITS Header attached to each FITS file.

After auto-generating your calibration groups, the Set Calibration window will look something like this:

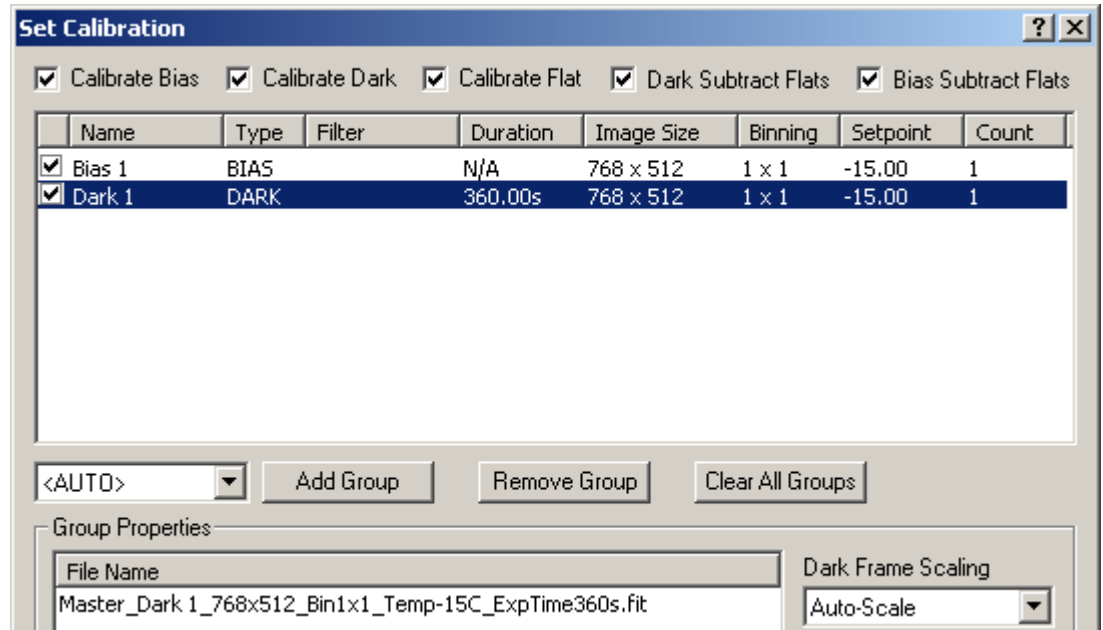


The upper panel lists the groups of calibration frames that MaxIm identified. The first calibration group should be selected. The lower “Group Properties” panel lists the files in the selected calibration group. Click on the group labeled “Dark1” in the upper panel to see the files in that group.

For each calibration group, you can select whether the master image for the group should be created by averaging each pixel in the individual frames or using the median value of each pixel. Setting the “Combine Type” to average will generally yield the lowest noise master frame but any irregularities in any of the images, such as from a cosmic ray hit, will show up in the master image. Setting the combine type to Median eliminates any excessively dark or light pixels in an individual image from affecting the master but produces a master image with slightly more noise than an average combine of clean individual calibration frames.

If MaxIm correctly identified all the calibration groups you created, you can click OK to close the Set Calibration window. Optionally you can click the “Replace w/Masters” button next to the Auto-Generate button. When Replace w/Masters is pressed, MaxIm will combine all the images in each calibration group and save the combined master image in the same directory as the individual frames. It will then modify the calibration groups to use each master frame. Using “Replace w/Masters” saves a little time while calibrating images because MaxIm only has to load and process one master file as opposed to all the individual frames.

After clicking “Replace w/Masters” the Set Calibration window will look like this:



**Note:** MaxIm assigns a name to the master calibration frames that shows all the unique characteristics about the calibration group used to create it.

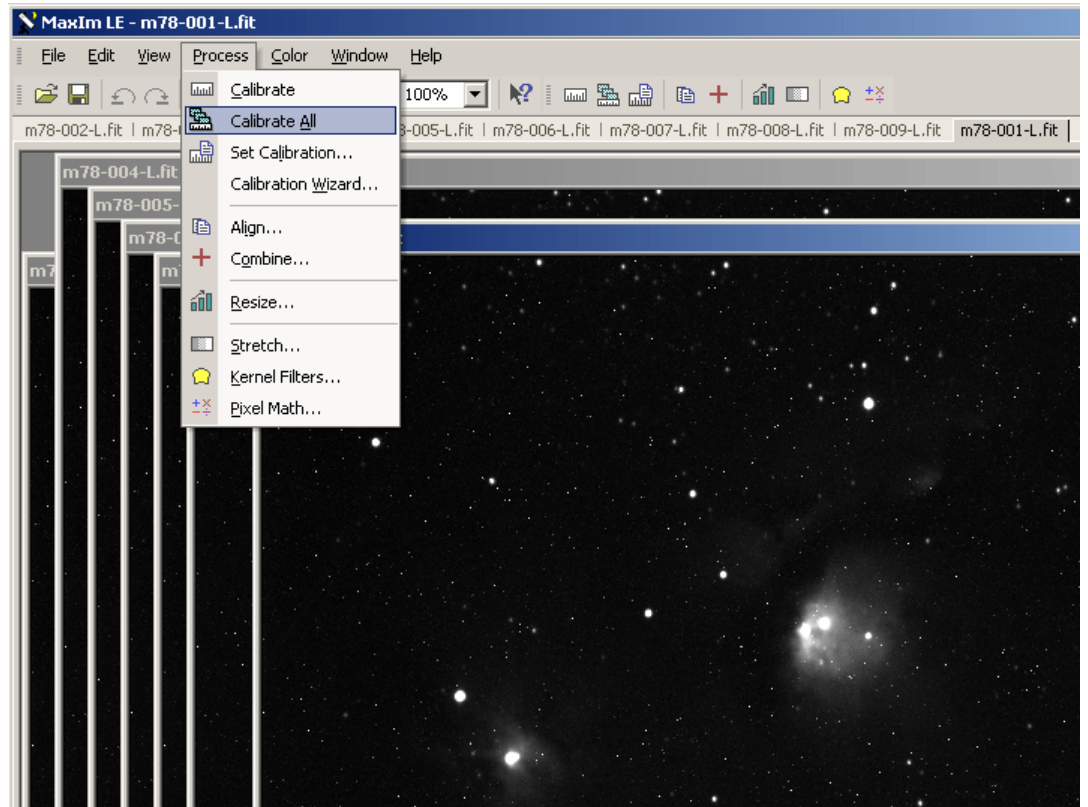
Click “OK” to close the Set Calibration window.

### Calibrate Images in MaxIm LE

Now that you’ve told MaxIm about all your calibration frames you’re ready to calibrate your light frames. We’re going to show an example of calibrating the “luminance” or “L” images. If you’re taking LRGB images, the same techniques will be applied to processing the images taken through the red, green and blue filters.

Open all the luminance images in MaxIm LE. In this example 9 luminance images were taken with an exposure of 360 seconds each. All the luminance images were given a filename suffix of “L” when the image sequence was setup using the Sequence tab in the Camera Control window. Select multiple files from within a folder and drag them all at once into MaxIm or select “Open...” from the File menu and open individual or multiple files in a single operation.

With the files open in MaxIm, select “Calibrate All” from the Process menu.



MaxIm will apply each of the calibration groups you specified in the Set Calibration step to each of the open images.

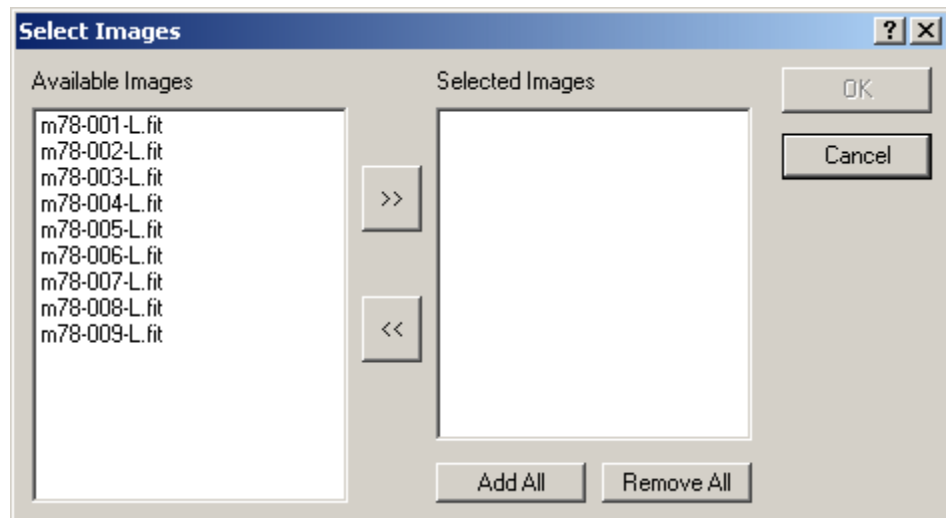
You can then choose to save the calibrated images or just leave them open in MaxIm.

**Tip:** Be careful when saving the individual calibrated images not to overwrite the original image files. It is often useful to go back to the original uncalibrated images.

## Combine Frames in MaxIm LE

After you've calibrated the individual light frames, you can then combine them into a master frame. Continuing with the example above, we'll combine the 9 luminance images into a master luminance image.

Select "Combine..." from the Process menu. If you're working with very large files, you can also choose "Combine Files..." from the File menu. It performs exactly the same function but works on files from disk rather than memory. The "Combine" command works best if all the images you want to combine fit in your computer's memory.



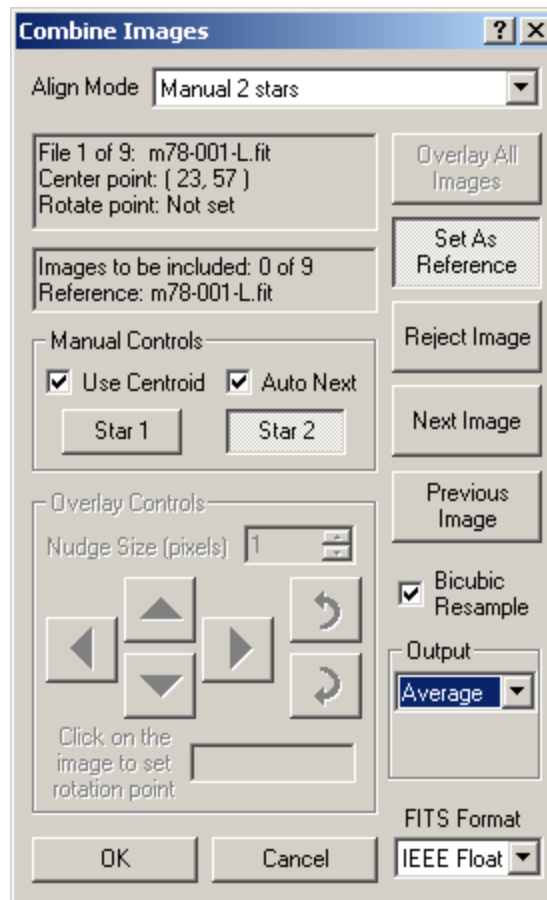
The dialog box above will open showing a list of all currently open files on the left. Select individual image files and then click the ">>" button to add them to the list of Selected Images or click the "Add All" button to add all the images. Click OK.

This brings up the Combine Images dialog, which performs two related functions. It aligns and then combines the individual images. Alignment is important because unless you have absolutely perfect polar alignment and tracking, the position of individual stars will shift slightly between images.

MaxIm LE provides 3 types of manual alignment. Other programs, such as MaxIm DL provide additional types of alignment including fully automatic alignment. For this example we're going to use the Align Mode, "Manual 2 stars." This 2 star alignment will shift and rotate individual frames to line up the stars in the images.

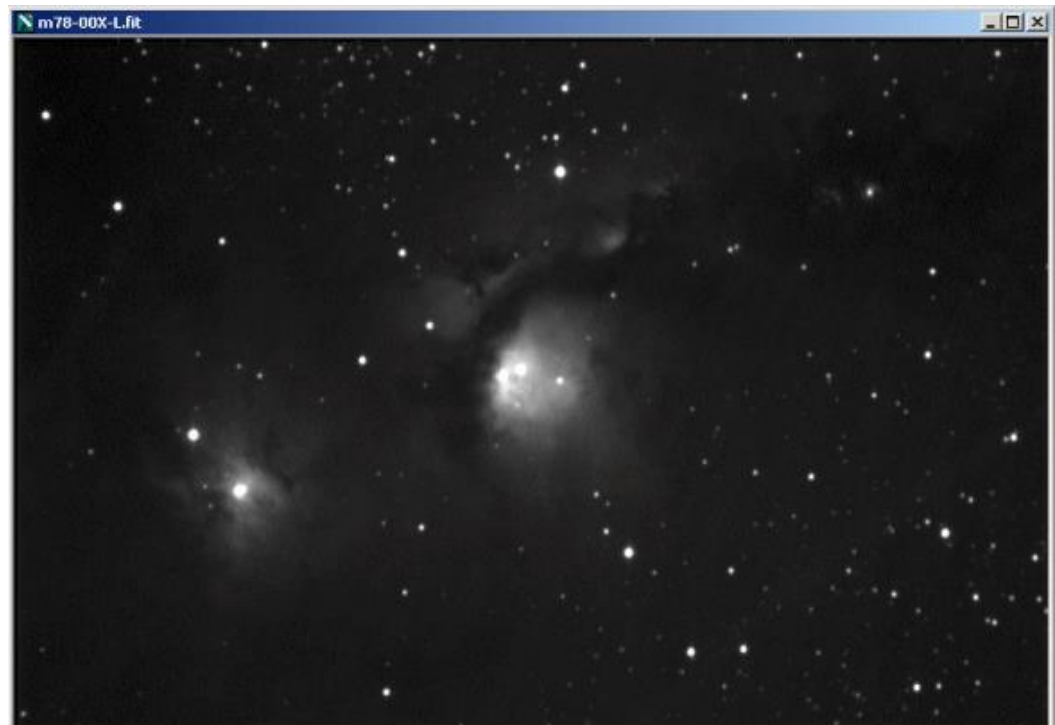
MaxIm makes manually aligning the images painless. If you're aligning on stars, click the checkboxes next to "Use Centroid" and "Auto Next". With "Use Centroid" MaxIm will calculate the center of mass of a point object like a star allowing sub-pixel alignment. With Auto Next set, each time you click on an image to pick the alignment star, MaxIm will automatically proceed to the next image. Select a star fairly near the edge of the first image and click on it. That sets the position of the first star in the alignment process. If "Auto Next" is set, MaxIm will display the next image file. Click on the same star in each image.

In the dialog box below we are already half way through the alignment process. Note that the "Center Point" is set to "23, 57" and the "Star 2" button is depressed.



The first image file is again the top window in MaxIm. Select a second alignment star near the opposite edge of the image. Repeat the process by clicking on the second star in each image. When you click on the star in the last image, MaxIm will make a bell sound indicating that the alignment process is complete.

Make sure the Output field is set like you want: Sum, Average or Median. Average will generally yield the best results if none of the images have any cosmic ray hits or other anomalous errors. Click OK to combine the images. MaxIm will open a new window with the combined image.



Combined image of M78

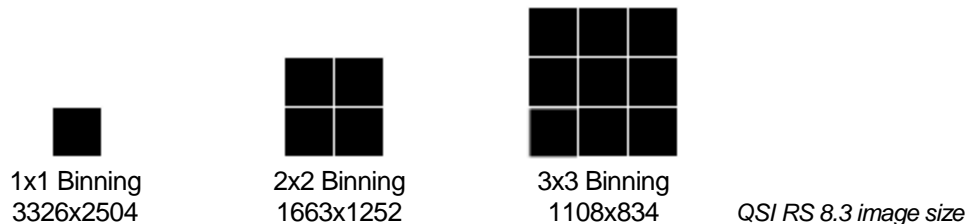
If everything was done correctly the calibrated and combined image should show additional detail with less noise and greater contrast than the individual frames. Changing the range of displayed brightness levels in Screen Stretch window will show additional detail in different parts of the raw image file. Save the image with a name that allows you to identify this image as a combined master image.

MaxIm provides additional tools for manipulating images. Please refer to the online help on Image Processing in MaxIm for additional details. After performing image calibration in MaxIm, many astronomers prefer to move the individual or combined image files into Adobe Photoshop or other dedicated image processing program for further processing.

## Binning

Binning allows you to combine multiple pixels into what are effectively larger pixels with up to sixteen times the surface area and sensitivity as an individual pixel. The standard binning mode is 1x1 meaning that each logical pixel is equal to one physical pixel. QSI RS Series models offer binning up to 9 pixels in either axis. Larger binning modes like these provide increased sensitivity and dynamic range at the expense of resolution. Asymmetrical binning (e.g. 1x3 or 3x2) is not commonly used but can be very useful for specialized applications such as spectroscopy.

The following image illustrates how rows and columns of pixels are combined when binning an image. Notice how the effective dimensions of the CCD changes with the degree of binning.

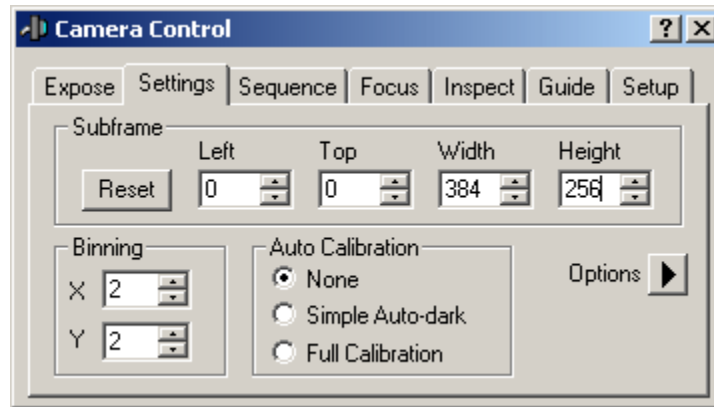


Binning other than 1x1 is typically used in two different situations. First, the human eye is much more sensitive to subtle changes in image brightness than it is to small changes in color. This can be taken advantage when producing color images by taking luminance images through the "L" filter binned 1x1 and red, green and blue images binned 2x2. When combined with the luminance image the 2x2 binned color image is almost indistinguishable from using 1x1 binning for the color frames.

The second situation where 2x2 or higher binning is used is when seeing conditions don't support high resolution imaging. If each pixel on your CCD "sees" 2 arc seconds of the sky through your telescope and the local seeing conditions are only 4 arc seconds, you won't benefit from the increased resolution offered by 1x1 binning. In this case, binning 2x2 will yield optimal results in a shorter amount of time.

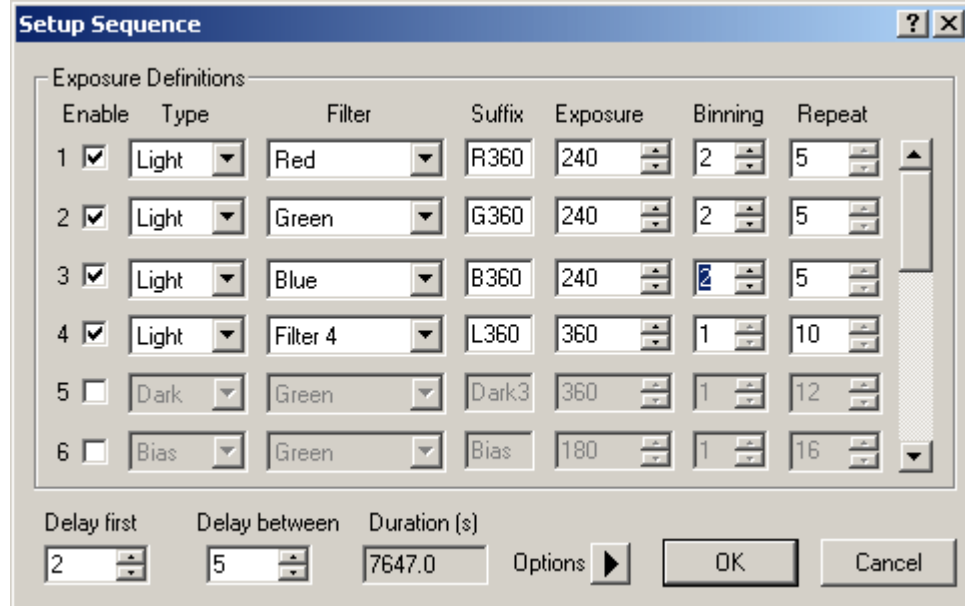


Select the binning mode for a single exposure in MaxIm LE on the Settings tab of the Camera Control window.



**Note:** MaxIm automatically adjusts the Width and Height fields to represent the size of the resulting image. In the example above 2x2 binning has been selected. This reduces the size of the resulting image of the QSI RS 0.4 from 768x512 to 384x256.

You can also select different binning modes when setting up a sequence of images under the Sequence tab of the Camera Control window.



In the example above, the red, green and blue filtered images will be taken with 2x2 binning. The luminance image through "Filter 4" will be taken with 1x1 binning. Note that in this sequence the color images are set for an exposure of 240 seconds. This would require a separate set of 240 second dark frames for the color exposures in addition to the 360 second dark frames for the 1x1 luminance frames.

**Note:** When using binning other than 1x1, the pixels are combined inside the CCD before reading and converting the combined pixel charge to a numeric value. This results in lower overall noise than reading each pixel separately and combining them mathematically in your computer. With 2x2 binning for instance, only one pixel value (representing a square of 4 physical pixels) is fed through the CCD output amplifier resulting in  $\frac{1}{4}$  the noise compared to reading each of the 1x1 pixels separately.

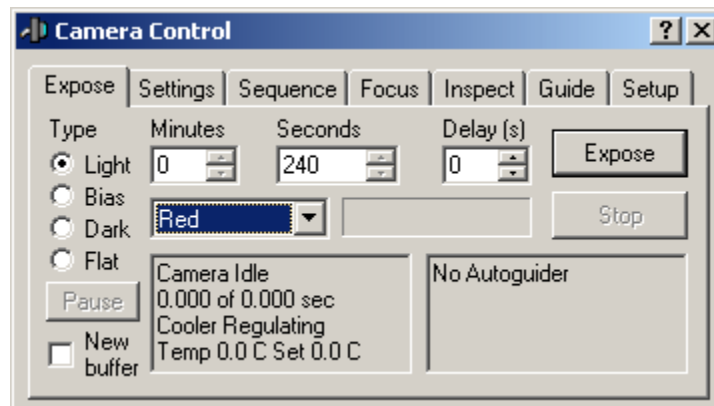
## Using the internal Color Filter Wheel

Your QSI RS Series camera may include an internal 5 or 8-position color filter wheel. The color filter wheel is controlled automatically by MaxIm LE or other camera control software. If you ordered LRGB filters with your camera, the default order of the filters is as shown below:

1. Red
2. Green
3. Blue
4. Luminance
5. Empty



In the picture above with the front cover removed from the camera, filter position 5 is shown empty over the shutter opening. Note that the dichroic filters reflect the light not passed by the filter (e.g. the red filter reflects cyan). Specify which filter to use for a single exposure in the Expose tab of the Camera Control window by selecting the filter in the pop-up menu

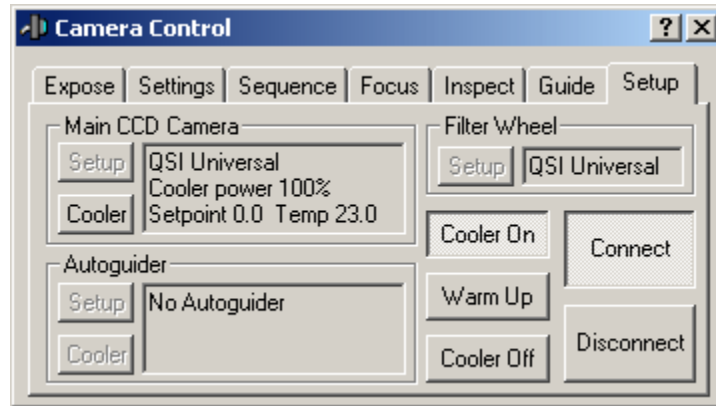


In a sequence of images, you can specify a different filter for each sequence group. Refer to the Setup Sequence window in the previous section. That sequence shows four sequence groups, one each through the Red, Green, Blue and Luminance filters (shown as Filter 4). Before each image is exposed the correct filter will be rotated into position.

For information on removing the front cover of the camera to add, remove or clean the color filters, refer to the Care & Maintenance section.

## Shutting down your camera

QSI cameras can safely be turned off by removing the power cable at any time, however it is best to let the temperature of the CCD rise close to the air temperature before removing power.



Click on the Setup Tab in the Camera Control window. Click the Cooler Off button to turn off the CCD cooler. The fans will continue to run dissipating heat from the thermoelectric coolers. When the temperature of the CCD begins to stabilize near the air temperature, click Disconnect to disconnect from the camera.

Unplug the power plug from the camera.

## Controlling your camera with other software

QSI camera drivers are included on the installation CD for MaxIm DL from Diffraction Limited and CCDSoft from Software Bisque. Follow the instructions in the installer if you want to control your QSI RS Series camera with either of these applications.

You can also write custom applications to control your QSI camera on Microsoft Windows or Linux systems using our ASCOM-compatible Windows COM API or Linux API.

For complete details on the Microsoft Windows or Linux API and other applications that please visit the Software and Drivers page on the QSI web site, <http://www.qsimaging.com/software.html>.

## Electronic Triggers and Guiding

The Guider/Control port on QSI *RS* Series camera can be used to trigger an exposure, trigger an external event such as a strobe or for generating Guider correction signals for astronomy applications.

### Triggering an Exposure or External Signal

QSI *RS* Series cameras support electronic input and output triggers through the opto-isolated signals on the control port. The Control Port on QSI *RS* Series cameras can be used to trigger an exposure or to generate a signal when an exposure has been started for triggering any synchronized event such as a strobe or laser.

See the Windows or Linux API Reference Manuals for complete details.

### Using an AutoGuider

This section provides basic instructions on how to use your QSI *RS* Series camera as your main imaging camera and set up a separate camera on a guide scope for guiding. For this example, we're using a Meade DSI Pro as the autoguider. For complete instructions on guiding, including a step-by-step tutorial, please see the Online help in MaxIm LE.

MaxIm LE supports the following cameras as autoguiders. Other camera control software, such as MaxIm DL support additional autoguiders with a QSI camera.

#### Autoguider support in MaxIm LE

▪ Fishcamp Starfish	▪ Any QSI camera
▪ Meade DSI Pro, DSI Pro II, DSI Pro III	▪ Any recent SBIG camera
▪ Orion StarShoot	▪ Video DirectShow
▪ Orion StarShoot Autoguider	▪ Lumenera
▪ Starlight Express Lodestar	

QSI 500 Series cameras have a Guider port on the bottom of the camera. This port sends guider correcting signals to your telescope mount. Connect the included guider cable from the camera Guider port to the AutoGuider port on your telescope mount. The guider

## QSI RS SERIES USER GUIDE

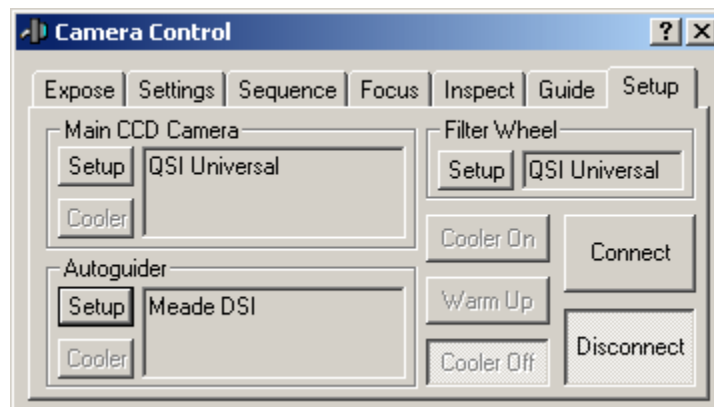
correction signals output by the QSI RS will work with most modern telescope mounts using the included guider cable.



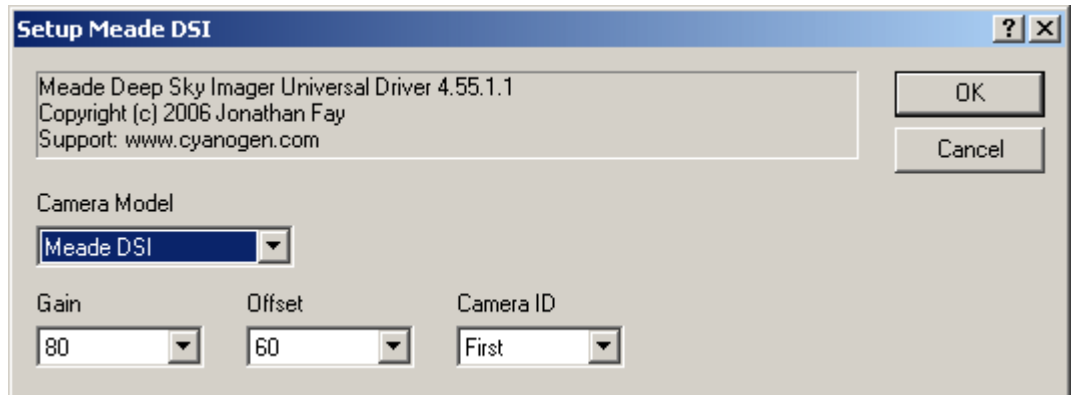
The photo to the left shows the guider cable connected to the AutoGuider port on a Losmandy Gemini System. Please refer to your camera and mount specifications to confirm your mount is compatible with the signals from the QSI RS Series camera.

Setup your QSI RS Series camera as described above. Hook up your guider camera to your guide scope and connect the guider camera to

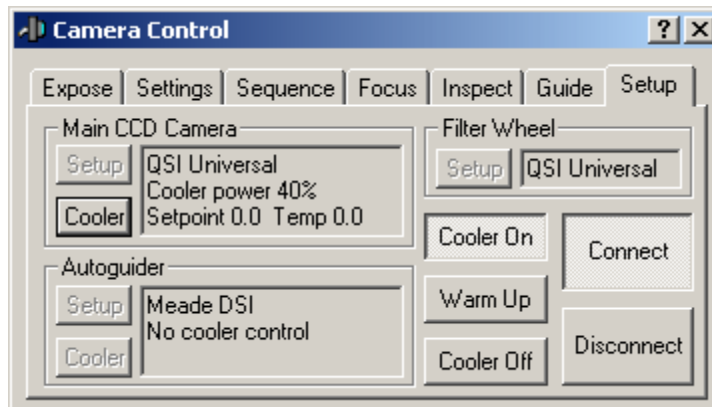
your computer.



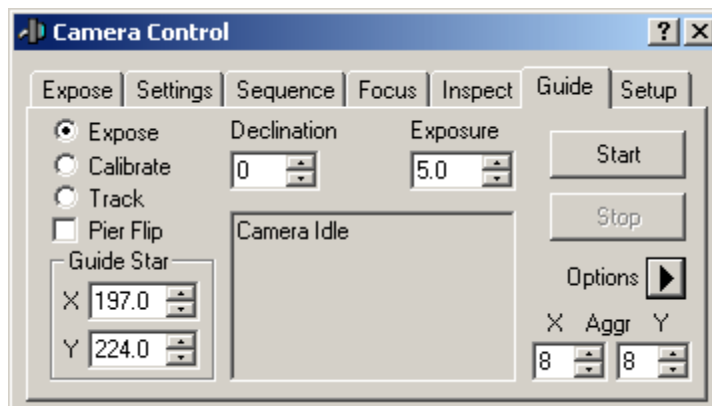
Go to the Setup tab of the Camera Control window. Click the Setup button in the Autoguider panel.



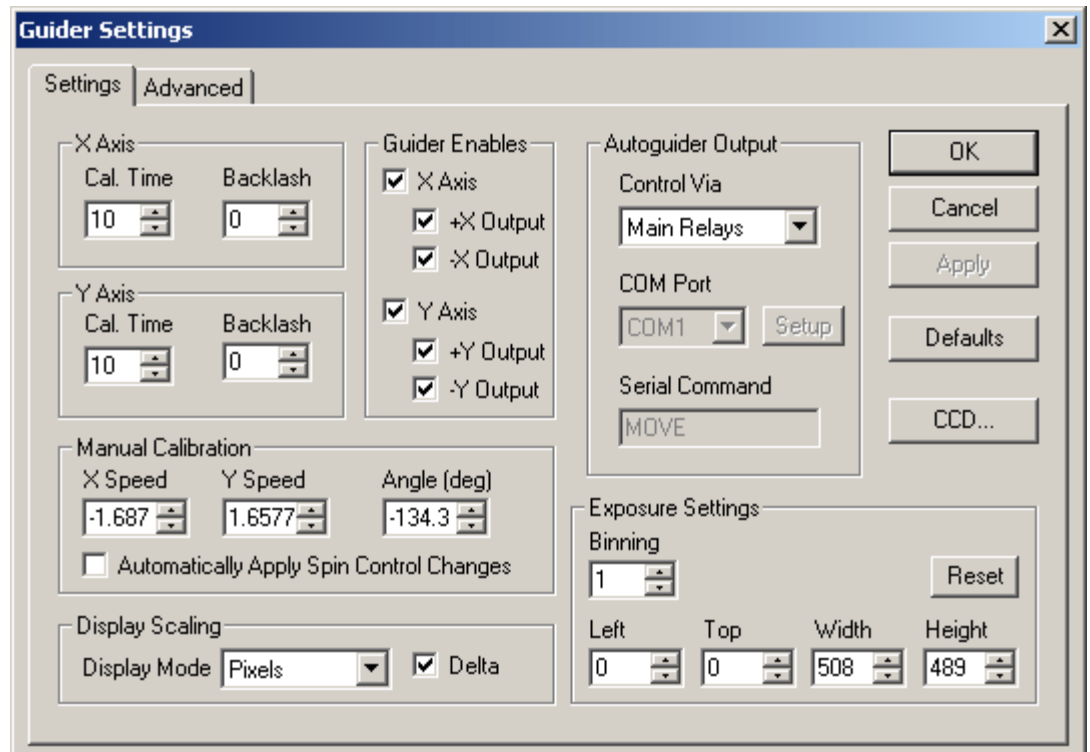
Follow the instructions that came with your autoguider camera to enable and configure the camera. Click OK to return to the Setup tab of Camera Control Window. Click Connect. If your cameras are hooked up and configured correctly, the status panels for each camera will show the current status of your main CCD camera and your Autoguider.



Click the "Guide" tab to the left of the Setup tab. The Start button will be enabled if the autoguider camera was setup correctly.



Click the black arrowhead to the right of "Options" below the Stop button and select "Guider Settings."

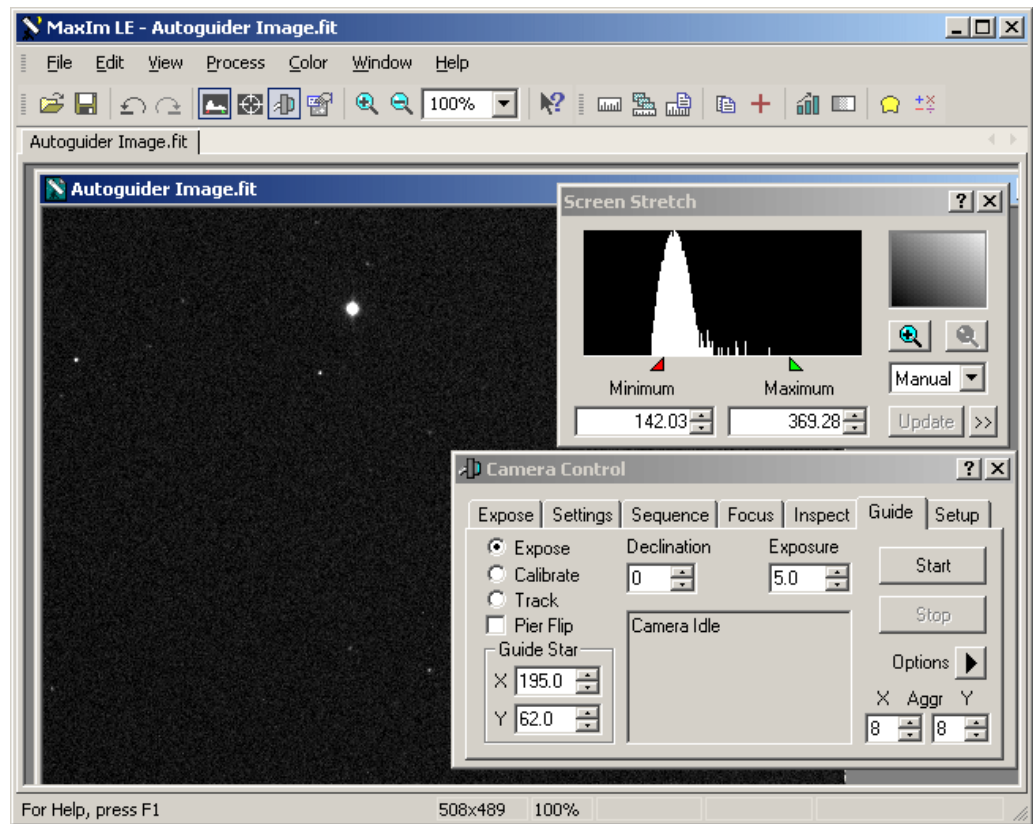


In the guider settings window, make sure that “Main Relays” is selected in the “Control Via” pop-up list under Autoguider Output. This instructs MaxIm to send the autoguider control signals through the Guider port on the QSI RS Series camera. If your autoguider camera also has a guider port, you can select “Guider Relays” to send the signals through the autoguider camera. MaxIm supports additional methods of generating the correct control signals. See the online help in MaxIm LE for complete details. Click OK to close the Guider Settings window and return to the Guide tab of the Camera Control Window.

You may need to focus your guide scope. You can take an image with your guide camera by pressing the Start button. Set the exposure only as long as necessary to still yield well-defined stars. Shorter exposures allow quicker cycles between guiding exposures and smoother guiding.

The first time you press Start with a new exposure length, MaxIm LE will automatically take a dark frame. Follow the instructions on screen. Press Start as necessary to take additional images while focusing your guide scope. Stop when you are satisfied with the focus and exposure length.





MaxIm LE automatically selects the brightest star as the guide star.

You are now set up for guiding. Continue with instructions in the online help in MaxIm LE to calibrate your autoguider and begin tracking the selected guide star.

For complete instructions on autoguiding in MaxIm LE please refer to the “Autoguiding” section of the online help in MaxIm.

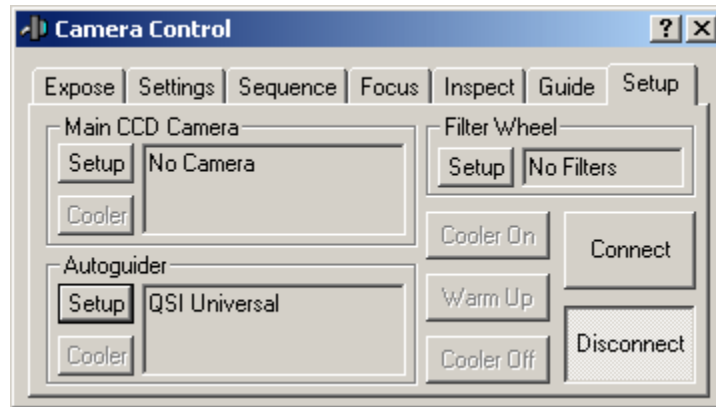
## Using a QSI RS Camera as an AutoGuider

Your QSI RS Series can be used as an autoguider with another camera as your main imaging camera. If using MaxIm LE, the main CCD camera must be set as a QSI camera or “No Camera.” The full version of MaxIm DL and CCDSoft support additional options.

**Note:** This section provides basic instructions on how to use your QSI RS Series camera as an autoguider. For this example, there is no main CCD camera. For complete instructions on guiding, including a step-by-step tutorial, please see the online help in MaxIm LE.

Click the Setup tab of the Camera Control window. Click the Setup button below Main CCD Camera and select “No Camera” under Camera Model and click OK to return to the Camera Control Window. Click the Setup button below Autoguider and select “QSI

Universal” under Camera Model and click OK to return to the Camera Control Window. Click Connect.



Click the Guide tab and again click the black arrowhead to the right of “Options” below the Stop button and select “Guider Settings.” Select “Guider Relays” in the “Control Via” pop-up list under Autoguider Output. This instructs MaxIm to send the autoguider control signals through the Guider port on the QSI 500 Series camera now being used as the autoguider. Click OK to close the Guider Settings window and return to the Guide tab of the Camera Control Window.

Everything else in the section above **Using an Autoguider** applies when using the QSI RS Series camera as the autoguider. Continue with **Using an Autoguider** above for additional details.

**Note:** For complete instructions on guiding, including a step-by-step tutorial, please see the Online help in MaxIm LE.

## Accessories

### T-mount adapter



The T-mount adapter plate attaches to the front of the camera body. It comes standard on all QSI RS Series cameras. The T-mount adapter is threaded with standard T-mount threads, 42mm diameter by 0.75mm pitch.

#### 2" nosepiece

The 2" nosepiece screws into the T-mount adapter plate. The 2" nosepiece allows the camera to be mounted in any 2" eyepiece adapter.

The 1 1/4" nosepiece adapter plate. The 1 1/4" mounted in any 1 1/4"



#### 1 1/4" nosepiece

is optional and screws into the T-mount 1/4" nosepiece allows the camera to be eyepiece adapter.

### C-mount

### adapter



The C-mount adapter replaces the standard T-mount adapter on the camera faceplate. The C-mount adapter is threaded with standard C-mount threads, 1" x 32tpi. There are two different versions of the C-mount adapter plate which provide the correct focal depth for slim and mid-sized QSI RS Series cameras. You must use the correct version of the C-mount adapter plate for your body style in order to achieve focus at infinity. A C-mount adapter will mount to RS Series WS model cameras but standard C-mount lenses will not achieve focus at infinity.

### SLR lens adapter

SLR lens adapters are available for the following lens mounts:



- Canon EF (EOS)
- Nikon F

The SLR lens adapter provides the correct focal distance for specified lenses when threaded to the standard T-mount adapter on WS model cameras. Standard extension tubes or T-mount extenders should be used to achieve the correct focal distance with slim or mid-size bodies. Mid-size bodies will require a 0.5" extension tube. Slim bodies require a 0.825" extension tube.

## Liquid heat exchanger



The liquid heat exchanger (LHX) provides additional cooling of the CCD beyond what can be achieved using the standard air cooling. The liquid heat exchanger attaches to the back of the QSI RS Series camera using four screws. Refer to the camera specifications to determine the temperature differential that can typically be maintained when using the LHX.

## Recirculating pump

The recirculating pump is used to pump water through the liquid heat exchanger.

## Color filter wheel



Cameras with an internal color filter wheel include one filter wheel and an optional set of LRGB filters. Additional 5 or 8-position color filter wheels can be ordered to hold 1.25" or unmounted 31mm filters. With additional color filter wheels you can load a second set of filters, such as narrowband filters or photometric filters, and easily replace the entire filter wheel. See the Care & Maintenance section below for instructions on removing and installing the color filter wheel.

See the WSG User Guide Supplement for details on accessories specific to WSG models.

See the Accessories page on the QSI web site for complete details on available accessories: <http://www.qsimaging.com/accessories.html>

## Care & Maintenance

### Cleaning the exterior

The QSI RS Series cameras are machined from high quality aluminum with a very durable anodized finish that resists most scratches and fingerprints. Use a soft cloth to remove dirt or spots from the exterior surface of the camera.

### Installing or removing color filters

Always remove the color filter wheel when installing or removing filters. To change filters or replace the color filter wheel the front cover of the camera must be removed. Place the camera face up on a stable surface. Using the included 3/32" Allen wrench, carefully remove the screws holding the camera cover to the camera body. Lift the cover straight up to expose the color filter wheel.



Remove the color filter wheel by unscrewing the screw in the center of the filter wheel. Carefully lift out the color filter wheel.

The standard color filter wheel accepts 1 1/4" mounted filters. Any filter can be screwed into any of the 5 or 8 available positions.

To replace the color filter wheel a slight pressure must be applied with the outside O-ring against the capstan motor that drives the color filter wheel. Carefully line up the center screw and press the filter wheel O-ring gently against the capstan motor.

Lining up a filter or empty filter position over the shutter opening can help to achieve the proper alignment.

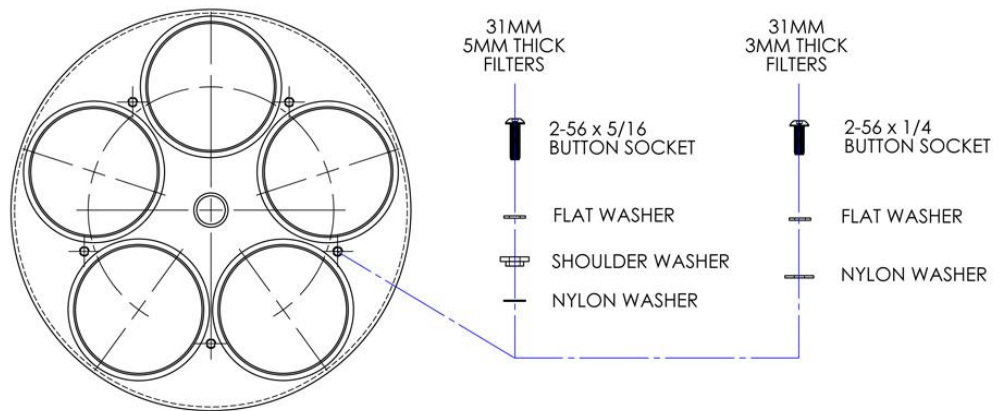
Screw in the center screw until it is quite snug. 5 inch-pounds or more of force if you have a torque wrench. Stainless steel screws naturally "lock" with anodized aluminum. The screw is tight enough when you can hear the screw "break free" when it is loosened.

## Installing or removing 31mm color filters

Some QSI RS Series Color Filter Wheels are configured to hold unmounted 31mm filters. Filter wheels capable of holding 31mm unmounted filters have a screw hole between each filter position.



Note the retaining screws in the image above between each filter position which hold the unmounted 31mm filters in place.



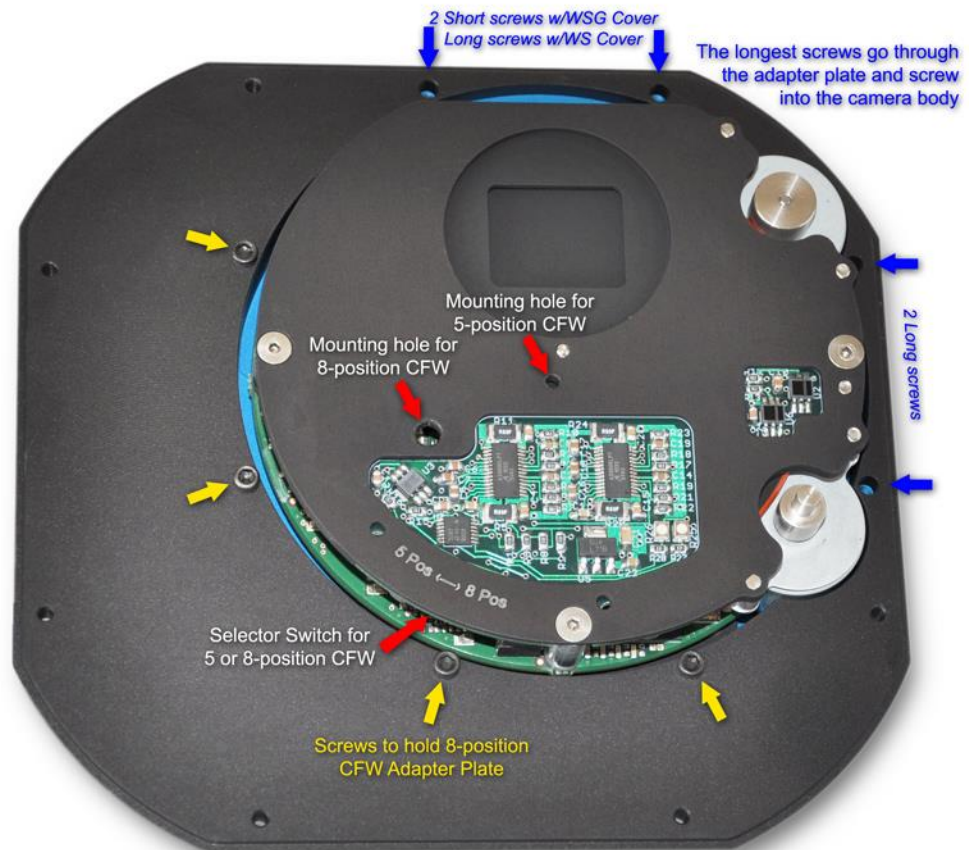
Different retaining screw/washer combinations are used to hold different thickness filters. Filters up to 3mm thick (e.g. Astrodon, Astronomik) use the configuration shown above to the right. 5mm thick IDAS filters use the configuration to the left.

**Note:** A thin spacer or O-ring may be required to be placed *under* unmounted filters that are less than 3.5mm thick in order to raise the top surface of the filter above the top of the filter wheel recess so the retaining screw can hold the filter firmly in place. The correct spacer should have been supplied with your filters or filter wheel.



## Installing the 8-position Color Filter Wheel

Always remove the color filter wheel when installing or removing filters. To change filters or replace the color filter wheel the front cover of the camera must be removed. Place the camera face up on a stable surface. Using the included 3/32" Allen wrench, carefully remove the screws holding the camera cover to the camera body. Note that 2 or 4 of the screws holding the 8-position cover to the body are longer than the rest. The longer screws go through the 8-position CFW Adapter Plate and screw directly into the QSI RS Series body, shown with blue arrows below. Lift the cover straight up to expose the color filter wheel.



Remove the color filter wheel by unscrewing the screw in the center of the filter wheel. Carefully lift out the color filter wheel. To replace the color filter wheel a slight pressure must be applied with the outside O-ring against the capstan motor that drives the color filter wheel. Carefully line up the center screw for the 8-position CFW (shown above) and press the filter wheel O-ring gently against the capstan motor. Lining up a filter or empty filter position over the shutter opening can help to achieve the proper alignment.

Screw in the center screw until it is quite snug. 5 inch-pounds or more of force if you have a torque wrench. Stainless steel screws naturally "lock" with anodized aluminum. The screw is tight enough when you can hear the screw "break free" when it is loosened.

## Cleaning the color filters

As with any precision optical surface, the optical coatings or glass of color filters can be permanently damaged by improper cleaning procedures. For best results follow the cleaning instructions that came with your filters.

It is best to clean the filters infrequently and use the least intrusive of the methods below to remove any dust or fingerprints.

1. Blow any dust off the filter with clean, dry compressed air.
2. Gently wipe off any remaining dust with a lens brush or microfiber cloth.
3. Remove the filter and clean it with gentle soap and water and then dry it gently using a 100% cotton cloth.

## Cleaning the CCD cover glass

As with any precision optical surface, the optical coatings or glass of CCD cover glass can be permanently damaged by improper cleaning procedures. You are often better off not trying to clean the CCD cover glass. The effects of small amounts of dust can be removed from your images with proper calibration techniques.

If you must clean the CCD cover glass.

1. First try blowing off any dust off the filter with compressed air.
2. If that doesn't work gently wipe off any remaining dust with a lens brush or microfiber cloth.

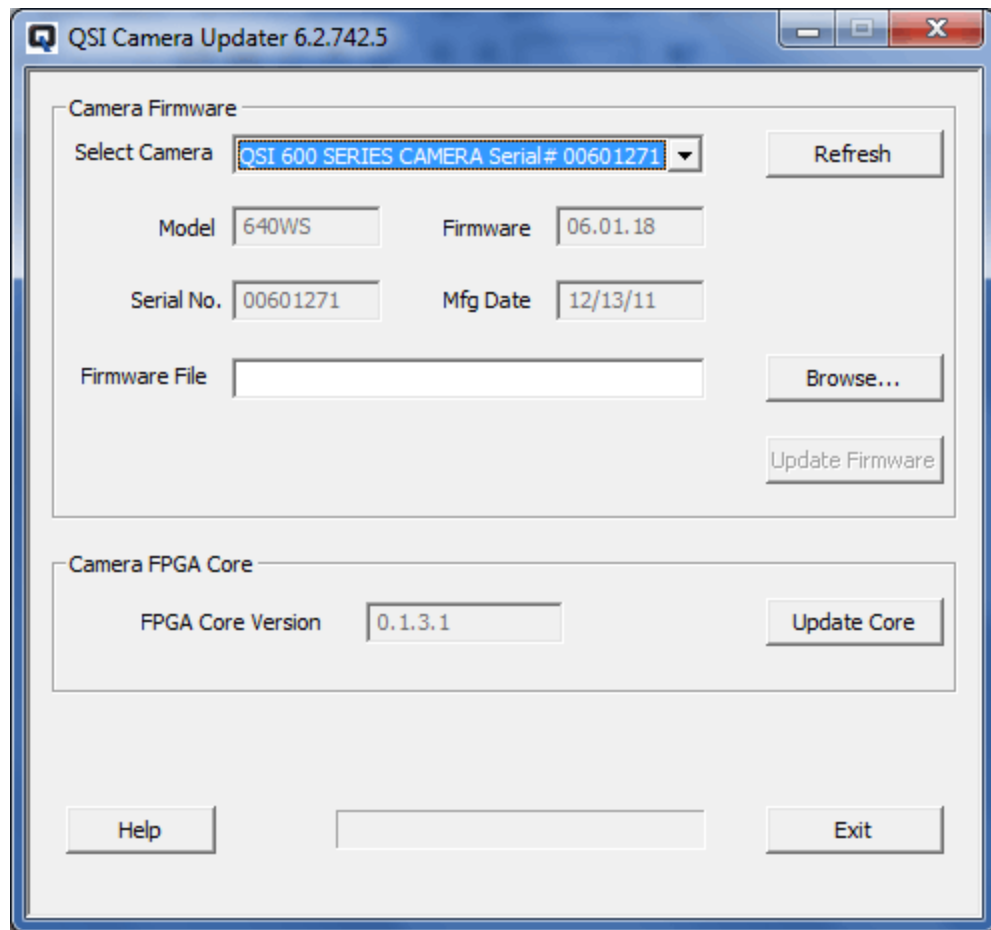
**Note: The CCD cover glass cannot be removed.**

## Updating the Firmware

QSI RS Series cameras contain field-upgradeable firmware to control all camera functions. QSI supplies a simple fail-safe Windows Updater application that handles all the details. The Updater application is automatically installed from the Installation CD. It is also included with the QSI USB Drivers and Software installer which can be downloaded from the QSI web site.

Launch the Updater by clicking the Windows Start button and select "QSI > Updater". The Updater window below will be displayed and the attached camera will go into a "listening" mode waiting for new firmware to be loaded.





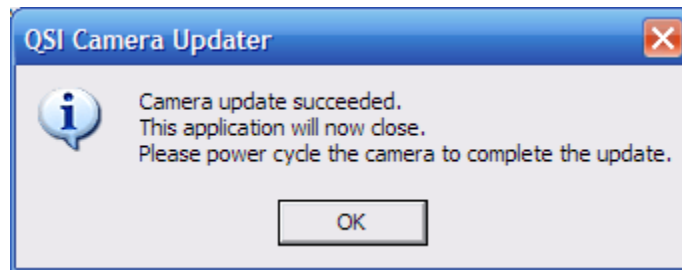
Click Refresh to scan for connected QSI cameras. If multiple cameras are attached, select the camera you wish to update.

The Model, Firmware, Serial No. and Mfg Date fields will be updated to reflect the currently selected camera.

Click the “Browse” button to select the new firmware file. The latest firmware files can be downloaded from the Software page on the QSI web site. Firmware files are downloaded in .zip format. The file will have to be unzipped before the Updater can load the new firmware into the camera.

<http://www.qsimaging.com/software.html>

After a firmware file is selected, the “Update Firmware” button will be enabled. Click “Update Firmware” to load the firmware into the camera. The status light on the back of the camera will flash at varying rates while the firmware is loaded and then verified. When the firmware has been loaded successfully, a dialog box will be presented.



Click OK. The Updater application will close and the camera will restart running the updated firmware. Click “Help” on the main Updater window for additional details.

## Updating the FPGA Core

QSI 600 Series cameras contain a custom Field-Programmable Gate Array (FPGA) to control certain camera functions. The FPGA can also be updated in the field. Click “Update Core” to install a new FPGA logic core. This function is disabled when updating a QSI RS Series camera

## Recharging the desiccant

The environmental chamber enclosing the CCD is filled with UHP argon during manufacturing to increase cooling capability and prevent the formation of frost on the CCD cover glass. This ultra dry and clean noble gas will generally remain in the environmental chamber for about 3 years.

**Warning:** Depending on specific use patterns and environmental conditions around the camera, it is possible that moisture could build up in the chamber in less than 3 years. Proper maintenance of the environmental chamber is critical to the operation of the camera. If water vapor or ice forms inside the environmental chamber when cooling below the dew point, it is critical that the camera be turned off immediately and the instructions below followed to restore the camera to proper operating condition.

You can restore many of the benefits of the original UHP argon by recharging the microsieve desiccant in the desiccant chamber. The desiccant removes the moisture present in the environmental chamber and stores it behind a submicron gas permeable membrane. Over time the desiccant will lose its ability to remove additional moisture and you may begin to see frost or dew forming on the CCD cover glass when operating the CCD at low temperatures or in high humidity environments.

To recharge the desiccant, unplug the camera and allow sufficient time for the CCD to reach room temperature. Place the camera, with the desiccant chamber cover upright, on a stable surface. Loosen the four screws holding the desiccant cover and lift it from the camera.

Lift the brass desiccant canister from the camera. Preheat an oven to 500 degrees Fahrenheit. Place the desiccant canister in the 500°F oven for 4 to 5 hours. This will drive out the accumulated water molecules, recharging the desiccant.

Remove the desiccant canister from the oven and let it cool. As soon as the canister leaves the oven it will begin absorbing moisture. To minimize the impact on the effectiveness of the desiccant, the canister should be returned to the camera as soon as it has cooled to nearly room temperature. Place it back in the desiccant chamber with the fine grid face down toward the inside of the camera. Screw the nameplate back down to the camera making sure that the O-ring surrounding the nameplate is carefully seated against inside of the environmental chamber.



**Note:** Your camera can also be returned to QSI to have the environmental chamber purged and refilled with UHP argon gas and the desiccant recharged. Argon has better thermal insulating properties than air and provides the best results but the camera will work extremely well in most conditions with just air in the chamber and an active desiccant plug. Contact QSI Support for details.

## Technical support

Most technical support questions can be answered 24 hours a day using the support section of our web site at <http://www.qsimaging.com/support.html>. There you will find online help and instruction manuals, technical articles and a searchable knowledge base with answers to common questions. If you can't find the answer to your question on our web site please contact QSI technical support at shown below. Email is preferred.

**Internet**     <http://www.qsimaging.com/support.html>

**Email**        [support@qsimaging.com](mailto:support@qsimaging.com)

**Phone**        888-774-4223

## Appendix A – RS Series Specifications

### General Camera Specifications (i, s, ws models)

Feature	QSI RS i Models	QSI RS s Models	QSI RS ws Models
Electronic Shutter (Interline transfer CCDs only)	100μsec to 240 minutes	100μsec to 240 minutes	100μsec to 240 minutes
Mechanical Shutter	-	0.03 seconds to 240 minutes	0.03 seconds to 240 minutes
Internal Color Filter Wheel	No	No	Yes - 5 Position, 1.25" std filters
Camera Body Configuration	Slim Cover	Medium Cover	Full Cover
Dimensions	W4.45" x H4.45" x D1.68" (add 0.23" for T-Mount)	W4.45" x H4.45" x D2.00" (add 0.23" for T-Mount)	W4.45" x H4.45" x D2.50" (add 0.23" for T-Mount)
Weight, without Nosepiece	26 oz. / 740g	34 oz. / 950g	40 oz. / 1120g
Optical Back Focus (without Filters in path)	0.61" w/ T-mount adapter 0.68" w/ C-mount adapter 0.39" w/o mounting adapter	0.90" w/ T-mount adapter 0.68" w/ C-mount adapter 0.68" w/o mounting adapter	1.40" with T-mount adapter 1.18" with C-mount adapter 1.18" w/o mounting adapter
Thermoelectric CCD Cooling	Temperature regulation +/- 0.1°C, @ 0°C to -40°C CCD temperature		
*In free air, Fans @ Full Speed	Typically 45°C below ambient air with 85% cooling power		
*With Opt Liquid Cooling (adds 0.75" to camera depth)	Typically 50°C below circulating liquid with 85% cooling power		
Cooling Fan Control	Intelligent, user configurable		
Status and Notification	User configurable multi-color LED status indicator and multifunction audible beeper. Over-temperature and high/low voltage alarms.		
Power Consumption	12v, 2A (24 watts) at max cooling, max fans and filter moving (25 AC watts max with included 90-240V AC power supply) 2.1mm i.d. DC power connector, o.d. 5.5mm, length 10mm, center positive		
Operating Environment	Temperature: -20°C to 30°C, Humidity: 10% to 90% non-condensing		
Computer Connectivity	USB 2.0 High Speed (USB 1.1 compatible)		
Other Ports	Optically isolated 4 channel control port for generating or receiving electronic trigger signals or telescope guiding		
T Mounting Adapter	Standard adapter - T-Thread, 42mm x 0.75mm		
C Mounting Adapter (1" x 32TPI)	Optional, C-Mount lens focus compatible (17.5mm backfocus)	Optional, C-Mount lens focus compatible (17.5mm backfocus)	Optional, for non-lens adapters and accessories (standard C-Mount lens does not reach focus)
Nosepiece	Standard, T-Adapter to 2" nosepiece Optional, T-Adapter to 1.25" nosepiece		

## General Camera Specifications (wsg, ws-8, wsg-8 models)

Feature	QSI RS wsg Models	QSI RS ws-8 Models	QSI RS wsg-8 Models
Electronic Shutter (Interline transfer CCDs only)	100µsec to 240 minutes	100µsec to 240 minutes	100µsec to 240 minutes
Mechanical Shutter	-0.03 seconds to 240 minutes	0.03 seconds to 240 minutes	0.03 seconds to 240 minutes
Internal Color Filter Wheel	Yes - 5 Position, 1.25" std filters	Yes - 8 Position, 1.25" std filters	Yes - 8 Position, 1.25" std filters
Camera Body Configuration	WSG Cover	Medium 8-pos Cover	WSG 8-pos Cover
Dimensions	W4.45" x H4.45" x D3.08" (add 0.23" for T-Mount) (+0.35" for 2.156" Adapt)	W5.86" x H5.56" x D2.5" (add 0.23" for T-Mount)	W5.86" x H5.56" x D3.08" (add 0.23" for T-Mount) (+0.35" for 2.156" Adapter)
Weight, without Nosepiece	46 oz. / 1300g	51 oz. / 1450g	56 oz. / 1600g
Optical Back Focus (without Filters in path)	1.98" w/ T-mount adapter 2.11" w/ 2.156" adapter 1.76" w/no adapter	1.40" w/ T-mount adapter 1.18" w/ C-mount adapter 1.18" w/no adapter	1.98" w/ T-mount adapter 2.11" w/ 2.156" adapter 1.76" w/no adapter
Thermoelectric CCD Cooling	Temperature regulation +/- 0.1°C, @ 0°C to -40°C CCD temperature		
*In free air, Fans @ Full Speed	Typically 45°C below ambient air with 85% cooling power		
*With Opt Liquid Cooling (adds 0.75" to camera depth)	Typically 50°C below circulating liquid with 85% cooling power		
Cooling Fan Control	Intelligent, user configurable		
Status and Notification	User configurable multi-color LED status indicator and multifunction audible beeper. Over-temperature and high/low voltage alarms.		
Power Consumption	12v, 2A (24 watts) at max cooling, max fans and filter moving (25 AC watts max with included 90-240V AC power supply) 2.1mm i.d. DC power connector, o.d. 5.5mm, length 10mm, center positive		
Operating Environment	Temperature: -20°C to 30°C, Humidity: 10% to 90% non-condensing		
Computer Connectivity	USB 2.0 High Speed (USB 1.1 compatible)		
Other Ports	Optically isolated 4 channel control port for generating or receiving electronic trigger signals or telescope guiding		
T Mounting Adapter	Standard adapter - T-Thread, 42mm x 0.75mm		
2.156" Adapter (2.156" x 24TPI)	Optional, with WSG models provides 1.8" of clear aperture to fully illuminate the pick-off prism	NA	Optional, with WSG models provides 1.8" of clear aperture to fully illuminate the pick-off prism
Nosepiece	Standard, T-Adapter to 2" nosepiece Optional, T-Adapter to 1.25" nosepiece Optional 2.156" Adapter to 2" nosepiece (WSG models only)		

## Model RS 0.4 CCD Specifications

Feature	Standard	Optional
Model 532 CCD Options	Kodak KAF-0402ME	Kodak KAF-0402E
CCD Architecture	Full Frame	Full Frame
Blue Enhanced	Yes	Yes
Microlens	Yes	No
Anti-blooming	No	No
Imager Size: (WxH)	6.91mm x 4.6mm	6.91mm x 4.6mm
Pixel Array (WxH):	784x520 total pixels, 768x512 active (visible)	784x520 total pixels, 768x512 active (visible)
Pixel Size:	9µm x 9µm	9µm x 9µm
Typical Values		
Pixel Full Well Depth	100,000 electrons	100,000 electrons
Quantum Efficiency	Peak: 83% 400nm: 44%	Peak: 73% 400nm: 30%
Pixel Dark Current	<1.0 electron per second at 0°C; <0.1 electron per second at -25°C	
Dark Current Doubling	6.3° C	6.3° C
Intrinsic Read Noise	15 electrons RMS	15 electrons RMS
Dynamic Range	76db	76db
Charge Transfer Efficiency	>0.99999	>0.99999

## Model RS 1.6 CCD Specifications

Feature	Standard	Optional
Model 516 CCD Options	Kodak KAF-1603ME	Kodak KAF-1603E
CCD Architecture	Full Frame	Full Frame
Blue Enhanced	Yes	Yes
Microlens	Yes	No
Anti-blooming	No	No
Imager Size: (WxH)	13.8mm x 9.2mm	13.8mm x 9.2mm
Pixel Array (WxH):	1552x1032 total pixels, 1536x1024 active (visible)	1552x1032 total pixels, 1536x1024 active (visible)
Pixel Size:	9µm x 9µm	9µm x 9µm
Typical Values		
Pixel Full Well Depth	100,000 electrons	100,000 electrons
Quantum Efficiency	Peak: 77% 400nm: 45%	Peak: 65% 400nm: 30%
Pixel Dark Current	<1.0 electron per second at 0°C ; <0.1 electron per second at -25°C	
Dark Current Doubling	6.3° C	6.3° C
Intrinsic Read Noise	15 electrons RMS	15 electrons RMS
Dynamic Range	76db	76db
Charge Transfer Efficiency	>0.99999	>0.99999

## Model RS 3.2 CCD Specifications

Feature	Standard	Optional
Model 532 CCD Options	Kodak KAF-3200ME	Kodak KAF-3200E
CCD Architecture	Full Frame	Full Frame
Blue Enhanced	Yes	Yes
Microlens	Yes	No
Anti-blooming	No	No
Imager Size: (WxH)	14.85mm x 10.26mm	14.85mm x 10.26mm
Pixel Array (WxH):	2254x1510 total pixels, 2184x1472 active (visible)	2254x1510 total pixels, 2184x1472 active (visible)
Pixel Size:	6.8µm x 6.8µm	6.8µm x 6.8µm
	<b>Typical Values</b>	
Pixel Full Well Depth	55,000 electrons	55,000 electrons
Quantum Efficiency	Peak: 82% 400nm: 55%	Peak: 65% 400nm: 30%
Pixel Dark Current	<0.5 electron per second at 0°C ; <0.05 electron per second at -25°C	
Dark Current Doubling	6° C	6° C
Intrinsic Read Noise	7 electrons RMS	7 electrons RMS
Dynamic Range	77db	77db
Charge Transfer Efficiency	>0.99999	>0.99999

## Model RS 2.0 CCD Specifications

Feature	RS 2.0	RS 2.0c
CCD Manufacturer & Model	Kodak KAI-2020M	Kodak KAI-2020CM
CCD Architecture	Interline Transfer	
Microlens	Yes	
Anti-blooming	Yes - 100x suppression	
Color Filters	No	Yes - Internal RGB on CCD; Bayer color filter mask
Imager Size: (WxH)	11.84mm x 8.88mm	
Pixel Array (WxH):	1640x1214 total pixels, 1600x1200 active (visible)	
Pixel Size:	7.4µm x 7.4µm	
	<b>Typical Values</b>	
Pixel Full Well Depth	45,000 electrons	
Quantum Efficiency	Peak: 55% 400nm: 45%	Blue Peak: 42%, Green Peak: 36%, Red Peak: 31%
Pixel Dark Current	<0.1 electron per second at 0°C	
Intrinsic Read Noise	<8 electrons RMS	
Dynamic Range	74db	
Charge Transfer Efficiency	>0.99999	

## Model RS 4.2 CCD Specifications

Feature	RS 4.2	RS 4.2c
CCD Manufacturer & Model	Kodak KAI-04022	Kodak KAI-04022 (Color)
CCD Architecture	Interline Transfer	
Microlens	Yes	
Anti-blooming	Yes - 300x suppression	
Color Filters	No	Yes - Internal RGB on CCD; Bayer color filter mask
Imager Size: (WxH)	15.15mm x 15.15mm	
Pixel Array (WxH):	2112x2072 total pixels, 2048x2048 active (visible)	
Pixel Size:	7.4µm x 7.4µm	
	<b>Typical Values</b>	
Pixel Full Well Depth	40,000 electrons	
Absolute Quantum Efficiency	Peak: 55% 400nm: 45%	Blue Peak: 45%, Green Peak: 42%, Red Peak: 35%
Pixel Dark Current	<0.1 electron per second at 0°C	
Intrinsic Read Noise	<8 electrons RMS	
Dynamic Range	74db	
Charge Transfer Efficiency	>0.99999	

## Model RS 8.3 CCD Specifications

Feature	RS 8.3	RS 8.3c
CCD Manufacturer & Model	Kodak KAF-8300	Kodak KAF-8300 (Color)
CCD Architecture	Full Frame	
Microlens	Yes (Optional non-microlens version available)	
Anti-blooming	Yes - 1000x suppression	
Color Filters	No	Yes - Internal RGB on CCD; Bayer color filter mask
Imager Size: (WxH)	17.96mm x 13.52mm	
Pixel Array (WxH):	3348x2574 total pixels, 3326x2504 active (visible)	
Pixel Size:	5.4µm x 5.4µm	
	<b>Typical Values</b>	
Pixel Full Well Depth	25,500 electrons	
Absolute Quantum Efficiency	Peak: 56% 400nm: 38%	Blue Peak: 33%, Green Peak: 41%, Red Peak: 33%
Pixel Dark Current	<0.02 electron per second at -10°C	
Intrinsic Read Noise	8 electrons RMS	
Dynamic Range	70db	
Charge Transfer Efficiency	>0.999995	



## Model RS 6.1 CCD Specifications

Feature	RS 6.1	RS 6.1c
CCD Manufacturer & Model	Sony ICX694	Sony ICX694 (Color)
CCD Architecture	Interline Transfer – Exview HAD CCD II	
Microlens	Yes	
Anti-blooming	Yes - 800x suppression	
Color Filters	No	Yes - Internal RGB on CCD; Bayer color filter mask
Imager Size: (WxH)	12.48mm x 9.98mm	
Pixel Array (WxH):	2758 x 2208 active (6.1 megapixels)	
Pixel Size:	4.54µm x 4.54µm	
	<b>Typical Values</b>	
Absolute Quantum Efficiency	Peak: ≈75% at 560nm	Blue: ≈46%, Green: ≈62%, Red: ≈66%
Pixel Dark Current	<0.002 electrons per second at -10°C	
Intrinsic Read Noise	<7 electrons RMS (typically 5 e- RMS)	
Dynamic Range	69db	

## Model RS 9.2 CCD Specifications

Feature	RS 9.2	RS 9.2c
CCD Manufacturer & Model	Sony ICX814	Sony ICX814 (Color)
CCD Architecture	Interline Transfer – Exview HAD CCD II	
Microlens	Yes	
Anti-blooming	Yes - 800x suppression	
Color Filters	No	Yes - Internal RGB on CCD; Bayer color filter mask
Imager Size: (WxH)	12.48mm x 9.98mm	
Pixel Array (WxH):	3388 x 2712 active (9.19 megapixels)	
Pixel Size:	3.69µm x 3.69µm	
	<b>Typical Values</b>	
Absolute Quantum Efficiency	Peak: ≈70% at 560nm	Blue: ≈45%, Green: ≈60%, Red: ≈64%
Pixel Dark Current	<0.002 electrons per second at -10°C	
Intrinsic Read Noise	<7 electrons RMS (typically 5 e- RMS)	
Dynamic Range	68db	

## Appendix B – Warranty

### QSI Warranty Policy

The limited warranty set forth below is provided by Quantum Scientific Imaging, Inc. for QSI Scientific Cameras when purchased directly from QSI or an authorized QSI dealer within the dealer's authorized territory. This limited warranty also covers the following accessories if they were included with your original purchase: carrying case, AC power adapter, AC cable, and USB cable.

Your QSI Scientific Camera is warranted against defects in materials or workmanship for a period of one (1) year from the date of original purchase, or longer in some regions as required by law. QSI will, at its option, repair or replace any camera that is proven to be defective during the warranty period.

If an extended warranty was purchased with your QSI camera, the term will be as set forth in the Extended Warranty agreement. All other terms and conditions in this QSI Warranty Policy continue to apply.

This limited warranty covers all defects encountered in normal use of the QSI Scientific Camera, and does not apply in the following cases:

(a) Loss of or damage to the QSI Scientific Camera due to abuse, mishandling, improper packaging by you, alteration, accident, electrical current fluctuations, failure to follow operating, maintenance or environmental instructions prescribed in QSI's user's manual or services performed by someone other than QSI, or an authorized QSI Scientific Camera Service Provider. Without limiting the foregoing, water damage, sand/corrosion damage, dropping the camera, scratches, abrasions or damage to the body, internal parts or circuit boards, or the imaging sensor will be presumed to have resulted from misuse, abuse or failure to operate the QSI Scientific Camera as set forth in the operating instructions.

(b) Use of parts or supplies (other than those sold by QSI) that cause damage to the QSI Scientific Camera or cause abnormally frequent service calls or service problems.

(c) If the camera body has been opened and any parts inside have been altered or damaged, except for those parts that are expressly intended for user modification or maintenance as described in the QSI Scientific Camera User Guide. QSI Scientific Cameras have internal parts that should not be touched or modified by the user. **UNLESS SPECIFICALLY DIRECTED TO REMOVE THE CAMERA COVER, SUCH AS FOR CHANGING FILTERS, WE STRONGLY RECOMMEND THAT YOU DO NOT OPEN YOUR QSI SCIENTIFIC CAMERA BODY. QSI IS NOT RESPONSIBLE FOR DAMAGE CAUSED BY MISUSE, ABUSE OR FAILURE TO OPERATE THE QSI SCIENTIFIC CAMERA AS SET FORTH IN THE OPERATING INSTRUCTIONS.**

(d) If the QSI Scientific Camera has had its serial number or dating altered or removed.

### Manufacturer Warranties

Kodak/Truesense provides a separate warranty that their CCDs will perform in normal use in accordance to device specifications for a period of one year from date of shipment to the customer. This warranty does not cover failure due to the following mechanical and electrical causes after receipt of the device by the customer: Damage from mechanical (scratches or breakage), electrical (ESD), or other misuse of the device (electrical, storage temperature, etc.) beyond the stated maximum ratings in the device specifications.

Filters installed by QSI may or may not be covered by a warranty from their manufacturer. Please contact the filter manufacturer for their warranty policy.

Pelican® provides a lifetime unconditional warranty on all of their cases.

### **Shipping Costs**

The customer is responsible for all costs in shipping to QSI. For a period of one (1) year after the date of purchase, QSI will pay reasonable shipping costs when returning a product to the customer after a warranty repair covered by the original factory warranty. All replacement/repaired products are shipped via UPS Ground unless a rush is requested. The cost of such a shipping upgrade is to be paid by the customer prior to shipment. The customer is responsible for return shipping costs on all maintenance services, even those included under an Extended Warranty Agreement. Customer is responsible for any additional taxes, duties or other fees associated with international shipments.

NO IMPLIED WARRANTY, INCLUDING ANY IMPLIED WARRANTY OF MERCHANTABILITY OR FITNESS FOR A PARTICULAR PURPOSE, APPLIES TO THE QSI SCIENTIFIC CAMERA AFTER THE APPLICABLE PERIOD OF THE EXPRESS LIMITED WARRANTY STATED ABOVE, AND NO OTHER EXPRESS WARRANTY OR GUARANTY, EXCEPT AS MENTIONED ABOVE, GIVEN BY ANY PERSON OR ENTITY WITH RESPECT TO THE QSI SCIENTIFIC CAMERA SHALL BIND QUANTUM SCIENTIFIC IMAGING, INC. (SOME STATES AND PROVINCES DO NOT ALLOW LIMITATIONS ON HOW LONG AN IMPLIED WARRANTY LASTS, SO THE ABOVE LIMITATION MAY NOT APPLY TO YOU.) QUANTUM SCIENTIFIC IMAGING SHALL NOT BE LIABLE FOR LOSS OF REVENUES OR PROFITS, INCONVENIENCE, EXPENSE FOR SUBSTITUTE EQUIPMENT OR SERVICE, STORAGE CHARGES, LOSS OR CORRUPTION OF DATA, OR ANY OTHER SPECIAL, INCIDENTAL OR CONSEQUENTIAL DAMAGES CAUSED BY THE USE OR MISUSE OF, OR INABILITY TO USE, THE QSI SCIENTIFIC CAMERA, REGARDLESS OF THE LEGAL THEORY ON WHICH THE CLAIM IS BASED, AND EVEN IF QUANTUM SCIENTIFIC IMAGING HAS BEEN ADVISED OF THE POSSIBILITY OF SUCH DAMAGES. IN NO EVENT SHALL RECOVERY OF ANY KIND AGAINST QUANTUM SCIENTIFIC IMAGING BE GREATER IN AMOUNT THAN THE PURCHASE PRICE OF THE QSI SCIENTIFIC CAMERA SOLD BY QUANTUM SCIENTIFIC IMAGING AND CAUSING THE ALLEGED DAMAGE. WITHOUT LIMITING THE FOREGOING, YOU ASSUME ALL RISK AND LIABILITY FOR LOSS, DAMAGE OR INJURY TO YOU AND YOUR PROPERTY AND TO OTHERS AND THEIR PROPERTY ARISING OUT OF USE OR MISUSE OF, OR INABILITY TO USE, THE QSI SCIENTIFIC CAMERA NOT CAUSED DIRECTLY BY THE NEGLIGENCE OF QUANTUM SCIENTIFIC IMAGING. (SOME STATES AND PROVINCES DO NOT ALLOW THE EXCLUSION OR LIMITATION OF INCIDENTAL OR CONSEQUENTIAL DAMAGES, SO THE ABOVE EXCLUSION OR LIMITATION MAY NOT APPLY TO YOU.) THIS LIMITED WARRANTY SHALL NOT EXTEND TO ANYONE OTHER THAN THE ORIGINAL PURCHASER OF THE QSI SCIENTIFIC CAMERA, OR THE PERSON FOR WHOM IT WAS PURCHASED AS A GIFT, AND STATES YOUR EXCLUSIVE REMEDY.

## Appendix C – Notices

If you have questions about this product, you can write to:

Quantum Scientific Imaging, Inc. Customer Service at 12 Coteau Dr., Poplarville, MS, 39470, USA  
or via the QSI website at [www.qsimaging.com](http://www.qsimaging.com).



**QSI 500/600/RS Series  
Tested to comply  
with FCC standards  
FCC Part 15 Class A**

Note: This equipment has been tested and found to comply with the limits for a Class A digital device, pursuant to part 15 of the FCC Rules. These limits are designed to provide reasonable protection against harmful interference when the equipment is operated in a commercial environment. This equipment generates, uses, and can radiate radio frequency energy and, if not installed and used in accordance with the instruction manual, may cause harmful interference to radio communications. Operation of this equipment in a residential area is likely to cause harmful interference in which case the user will be required to correct the interference at his own expense.

Modifications not expressly approved by the manufacturer could void the user's authority to operate the equipment under FCC rules.



## EC Declaration of Conformity

The QSI 500/600/RS Series conforms with the essential requirements of the EMC directive 2004/108/EC, based on the following specifications applied:

EU harmonized Standards  
EN/KN55022 Class A Emissions  
EN61326-1: 2006, KN22 Emissions  
EN61326-1:2006, KN24 Immunity  
FCC part 15.b Class A

and therefore complies with the essential requirements and provisions of the MEC Directive.

The Declaration of Conformity is kept at the following address:

Quantum Scientific Imaging, Inc.  
12 Coteau Dr. Poplarville, MS 39470, USA  
Phone Number: 888-774-4223, Fax Number: 888-774-4223  
[www.QSIImaging.com](http://www.QSIImaging.com)